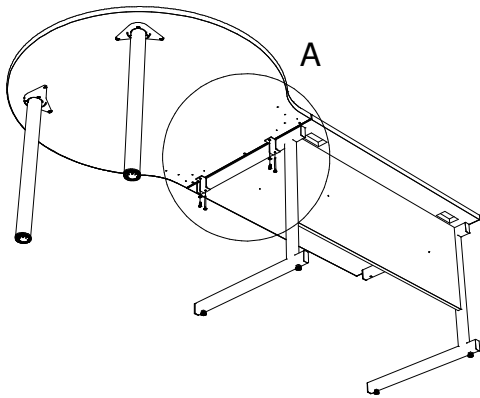
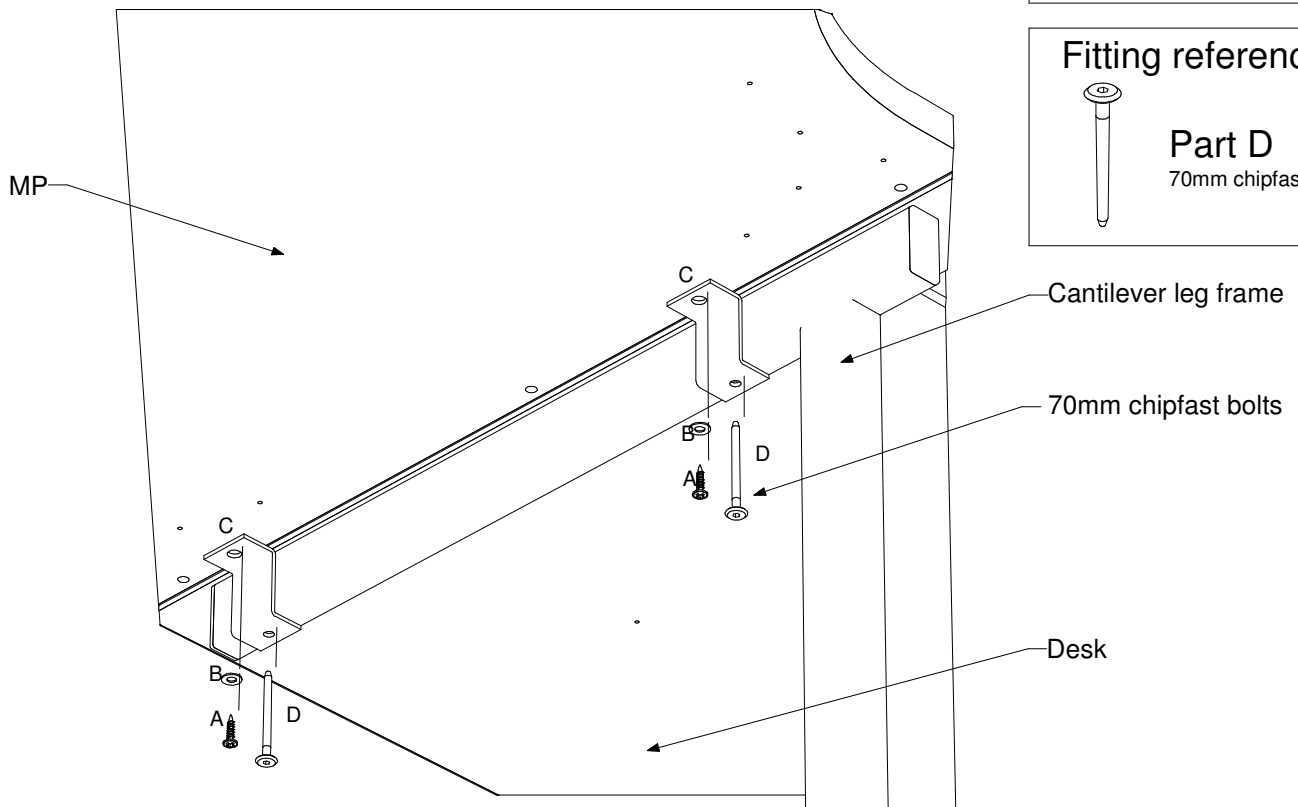
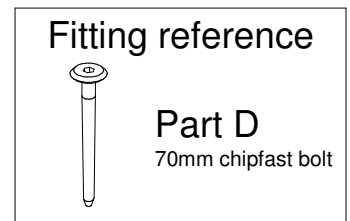
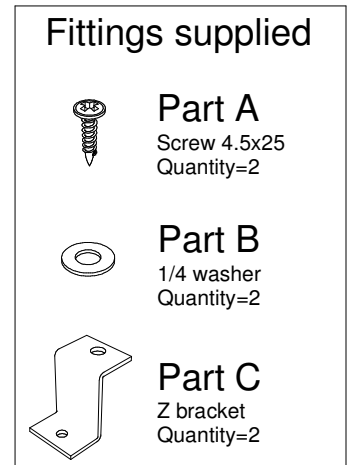
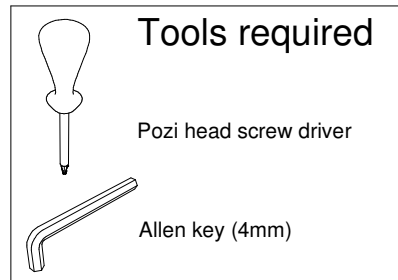


Satellite MP Cant Bracket Pack



Feature A

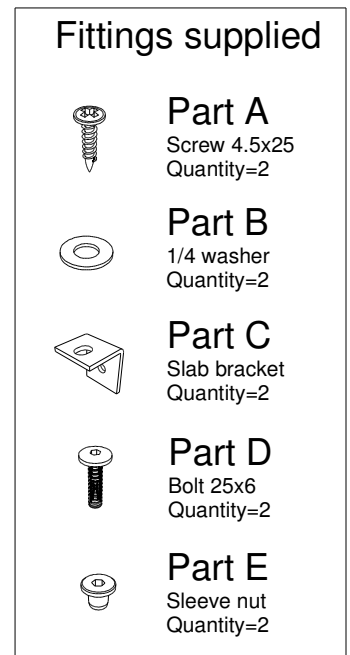
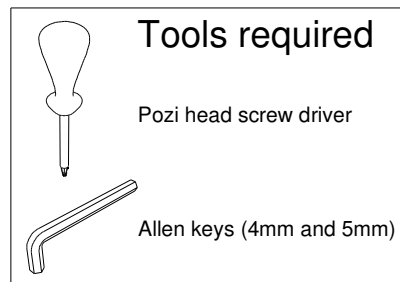
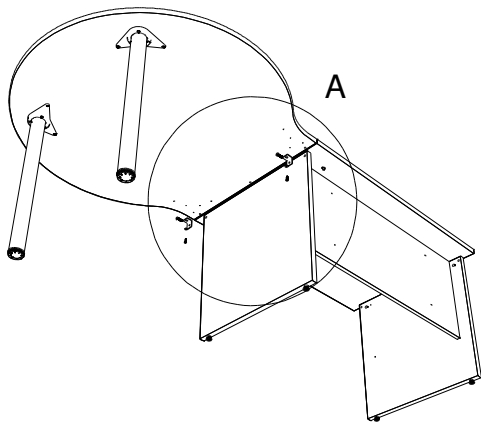


Assembly steps

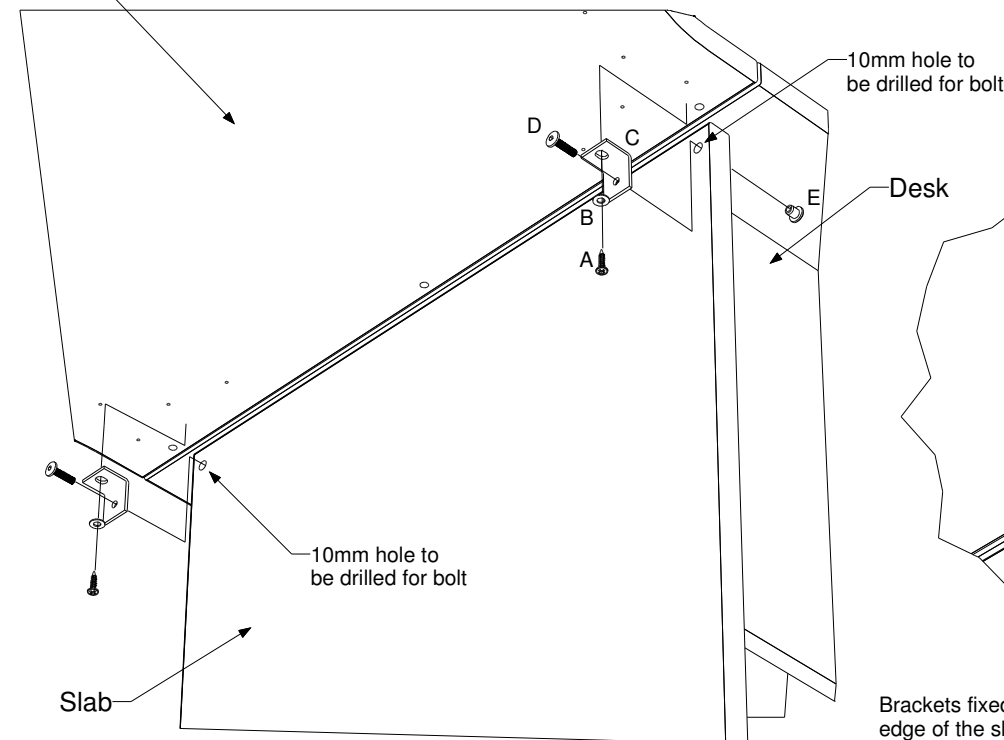
1. Remove the 70mm chipfast bolts (parts D x2) that connect the top of the desk to the cantilever leg frame.
2. Use the 70mm chipfast bolts (parts D x2) to fix parts C (x2) to the desk (use the small hole on the brackets).
3. Stand the MP up, rest it on the brackets in the position you would like it fixed.
4. Fix the brackets (part C) to the MP using parts A (x2) and parts B (x2). (An electric screw driver may be required).

N.B. Larger meeting points (1600/1200) require 2 bracket packs (4 Brackets), fixed across 2 desks.

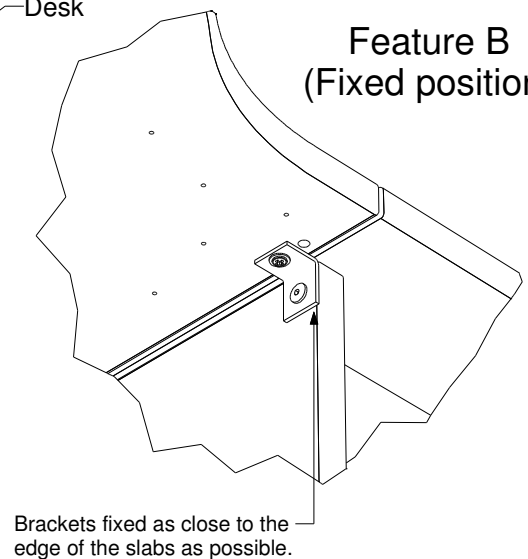
Satellite MP Slab Bracket Pack



Feature A



Feature B (Fixed position)



Assembly steps

1. Position parts C (x2) so they sit flush with the edges of the slabs and are pushed firmly against the top of the desk, as shown in feature B, (round hole against slab). Mark through the round holes onto the slabs where the through holes should be. (These should be 21.5mm down from the top of the slab and 15mm in from the edges).
2. Drill the 10mm through holes in the positions previously stated, apply a packing piece to the opposite face when drilling to prevent damage.
3. Use parts D (x2) and parts E (x2) to fix the brackets via the round holes to the slabs.
4. Stand the MP up, rest it on the brackets in the position you would like it fixed.
5. Fix the brackets (part C) to the MP using parts A (x2) and parts B (x2). (An electric screw driver may be required).

N.B. Larger meeting points (1600/1200) require 2 bracket packs (4 Brackets), fixed across 2 desks.