



LEE & PLUMPTON

Inspiration At Work

STORAGE SOLUTIONS



SIGNATURE





Features & Details

- Unified range of 5 storage formats.
- Choice of widths, depths and heights.
- Signature Recycling - environmental waste collection.
- Signature Grow - a range of biophilic planters.

SPECIFICATION

- Manufactured from grade E1 melamine-faced high density particleboard, 25mm top and base; 18mm side and doors.
- Silver bar handles as standard (other handle options available see page 127).
- Polypropylene feet.
- The feet at the front of each unit have a height levelling mechanism built-in.
- Locking as standard.
- Shelves available to purchase separately (shelves provided with bookcases).
- We recommend units of 1800mm and above are fixed to a wall.

- Signature storage is available with either a white or silver base and feet. The units have a choice of wood finishes. A matching base is available upon request.

SHELVES, SLIDING & LATERAL FILING FRAMES

- Shelving matches the colour finish of the base, whilst bookcase shelving matches the unit.
- Sliding & lateral filing frames are also available in silver and white.

DELIVERY

All storage is shipped flat packed, with the exception of side filers and all filing cabinets, which are shipped assembled.



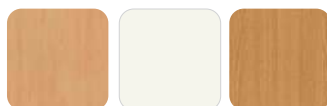
QUICK SHIP

Base & Feet



W White S Silver

Wood Finishes

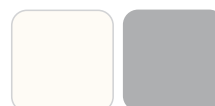


BE Beech WH White LO Light Oak

Wood finishes are heat, stain and scratch resistant when used for their intended purposes.

GROUP A

Base & Feet



W White S Silver

Wood Finishes



BI Birch MA Maple WA Walnut NN Natural Nebraska Oak



BE Beech WH White LO Light Oak GN Grey Nebraska Oak

STORAGE UNITS

Please add the base and feet option and then the wood suffix to your code when ordering eg: SRCU7410**WB**I

FOR SHELVES, SLIDING & LATERAL FRAMES

Select the code for the product you require and simply add: **S** for Silver or **W** for White

QS: Quick Ship | **GROUP A:** Subject to a longer lead time.

● Available
○ Not Available



CUPBOARDS WITH STANDARD LOCK



2000mm High Shown

W x D x H (mm)	Code	QS	Grp A
800 Wide			
800 x 600 x 725	SRCU7280	○	●
800 x 600 x 740	SRCU7480	○	●
800 x 500 x 1000	SRCU1080	○	●
800 x 500 x 1200	SRCU1280	○	●
800 x 500 x 1600	SRCU1680	○	●
800 x 500 x 1800	SRCU1880	○	●
800 x 500 x 2000	SRCU2080	○	●
1000 Wide			
1000 x 600 x 725	SRCU7210	○	●
1000 x 600 x 740	SRCU7410	●	●
1000 x 500 x 1000	SRCU1010	●	●
1000 x 500 x 1200	SRCU1210	○	●
1000 x 500 x 1600	SRCU1610	●	●
1000 x 500 x 1800	SRCU1810	●	●
1000 x 500 x 2000	SRCU2010	○	●

Storage internals and accessories available on page 217.

CUPBOARDS WITH ESPAGNOLETTE LOCK



Espagnolette lock, a double secure system top and bottom of the door.

Soft close hinge is also included, which will catch the door before it closes to bring it to a soft and quiet stop.

W x D x H (mm)	Code	QS	Grp A
800 Wide			
800 x 600 x 725	SRCU7280E	○	●
800 x 600 x 740	SRCU7480E	○	●
800 x 500 x 1000	SRCU1080E	○	●
800 x 500 x 1200	SRCU1280E	○	●
800 x 500 x 1600	SRCU1680E	○	●
800 x 500 x 1800	SRCU1880E	○	●
800 x 500 x 2000	SRCU2080E	○	●
1000 Wide			
1000 x 600 x 725	SRCU7210E	○	●
1000 x 600 x 740	SRCU7410E	○	●
1000 x 500 x 1000	SRCU1010E	○	●
1000 x 500 x 1200	SRCU1210E	○	●
1000 x 500 x 1600	SRCU1610E	○	●
1000 x 500 x 1800	SRCU1810E	○	●
1000 x 500 x 2000	SRCU2010E	○	●

Storage internals and accessories available on page 217.

QS: Quick Ship | GROUP A: Subject to a longer lead time.

● Available
○ Not Available



TAMBOUR CUPBOARDS



2000mm High Shown

W x D x H (mm)	Code	QS	Grp A
800 Wide			
800 x 600 x 725	SRTA7280	○	●
800 x 600 x 740	SRTA7480	○	●
800 x 500 x 1000	SRTA1080	○	●
800 x 500 x 1200	SRTA1280	○	●
800 x 500 x 1600	SRTA1680	○	●
800 x 500 x 1800	SRTA1880	○	●
800 x 500 x 2000	SRTA2080	○	●
1000 Wide			
1000 x 600 x 725	SRTA7210	○	●
1000 x 600 x 740	SRTA7410	●	●
1000 x 500 x 1000	SRTA1010	●	●
1000 x 500 x 1200	SRTA1210	○	●
1000 x 500 x 1600	SRTA1610	●	●
1000 x 500 x 1800	SRTA1810	●	●
1000 x 500 x 2000	SRTA2010	○	●

Tambour doors come in a choice of silver or white.

Storage internals and accessories available on page 217.

BOOKCASES



2000mm High Shown

Bookcase	W x D x H (mm)	Code	QS	Grp A
800 Wide				
Desk High 1 Shelf	800 x 340 x 725	SRBC7280S1	○	●
Desk High 1 Shelf	800 x 340 x 740	SRBC7480S1	○	●
1 Shelf	800 x 340 x 1000	SRBC1080S1	○	●
2 Shelves	800 x 340 x 1200	SRBC1280S2	○	●
3 Shelves	800 x 340 x 1600	SRBC1680S3	○	●
4 Shelves	800 x 340 x 1800	SRBC1880S4	○	●
4 Shelves	800 x 340 x 2000	SRBC2080S4	○	●
1000 Wide				
Desk High 1 Shelf	1000 x 340 x 725	SRBC7210S1	○	●
Desk High 1 Shelf	1000 x 340 x 740	SRBC7410S1	●	●
1 Shelf	1000 x 340 x 1000	SRBC1010S1	●	●
2 Shelves	1000 x 340 x 1200	SRBC1210S2	○	●
3 Shelves	1000 x 340 x 1600	SRBC1610S3	●	●
4 Shelves	1000 x 340 x 1800	SRBC1810S4	●	●
4 Shelves	1000 x 340 x 2000	SRBC2010S4	○	●

QS: Quick Ship | **GROUP A:** Subject to a longer lead time.

● Available
○ Not Available



CREDENZA



740mm High Shown

W x D x H (mm)	Code	QS	Grp A
800 Wide			
800 x 600 x 725	SRCZ7280	○	●
800 x 600 x 740	SRCZ7480	○	●
800 x 500 x 1000	SRCZ1080	○	●
800 x 500 x 1200	SRCZ1280	○	●
1000 Wide			
1000 x 600 x 725	SRCZ7210	○	●
1000 x 600 x 740	SRCZ7410	●	●
1000 x 500 x 1000	SRCZ1010	●	●
1000 x 500 x 1200	SRCZ1210	○	●

The running track mechanism is hidden by the overhang of the top panel, with a concealed guide at the bottom. Storage internals and accessories available on page 217.

FILING CABINET



1400mm High Shown

Filing Cabinet	W x D x H (mm)	Code	QS	Grp A
2 Drawer	480 x 600 x 725	SRFC72D2	●	●
2 Drawer	480 x 600 x 740	SRFC74D2	●	●
3 Drawer	480 x 600 x 1070	SRFC10D3	●	●
4 Drawer	480 x 600 x 1400	SRFC14D4	●	●

All filing cabinets are supplied fully assembled.

SIDE FILER



725mm High Shown

W x D x H (mm)	Code	QS	Grp A
800 x 600 x 725	SRSF72D2	○	●
800 x 600 x 740	SRSF74D2	●	●

Storage accessories available on page 217.

Both drawers feature sliding filing frames as standard.

QS: Quick Ship | **GROUP A:** Subject to a longer lead time.

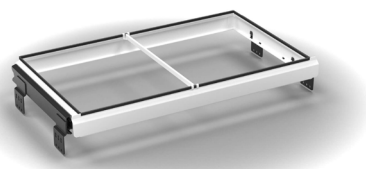
- Available
- Not Available



STORAGE INTERNALS & ACCESSORIES



Single Shelf



Sliding Filing Frame



Lateral Filing Frame

Cupboards & Credenza	800mm	1000mm	QS	Grp A
Single Shelf for Desk High Cupboards & Credenza	SRCU806SH1	SRCU106SH1	●	●
Single Shelf for Cupboards & Credenza	SRCU805SH1	SRCU105SH1	●	●
Sliding Filing Frame for Cupboards	SRCU80SFF	SRCU10SFF	●	●
Lateral Filing Frame for Cupboards	SRCU80LFF	SRCU10LFF	●	●

Tambours	800mm	1000mm	QS	Grp A
Single Shelf for Desk High Tambours	SRTA806SH1	SRTA106SH1	●	●
Single Shelf for Tambours	SRTA805SH1	SRTA105SH1	●	●
Sliding Filing Frame for Tambours	SRTA80SFF	SRTA10SFF	●	●
Lateral Filing Frame for Tambours	SRTA80LFF	SRTA10LFF	●	●

Shelves, Sliding and Lateral Frames are available in silver or white to complement the stylish panel base and feet. Simply add the colour suffix to your code when ordering: **S** Silver **W** White

HANDLES

We also offer a range of handles to customise the range further.



Bow Handle option on 3 drawer pedestal.



Bow Handles



Mosaic Handles



Matrix Handles



Oval Handles



Bar Handles (as standard)

Handles	Description	Colour	Code	QS	Grp A
Bow Handles	Pack of 10	Silver	ACBOW	●	●
Mosaic Handles	Pack of 10	Silver	ACMOSAIC	●	●
Matrix Handles	Pack of 10	Silver	ACMATRIX	●	●
Oval Handles	Pack of 10	Silver	ACOVAL	●	●

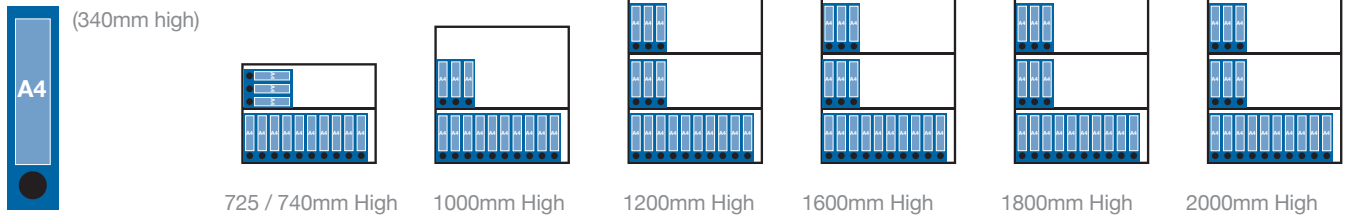


STORAGE SHELF SPACING

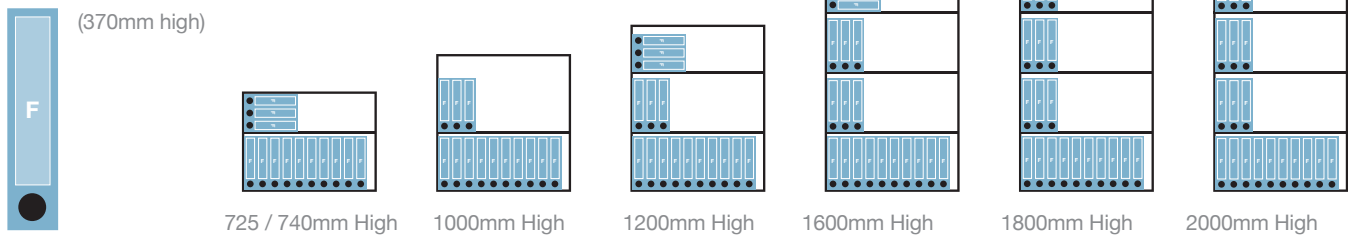
SIGNATURE 800MM WIDE

Illustrations show 800mm wide, holding 10 box files per shelf.
Please note, for Tambour cupboards 800mm wide, unit holds 8 per shelf.

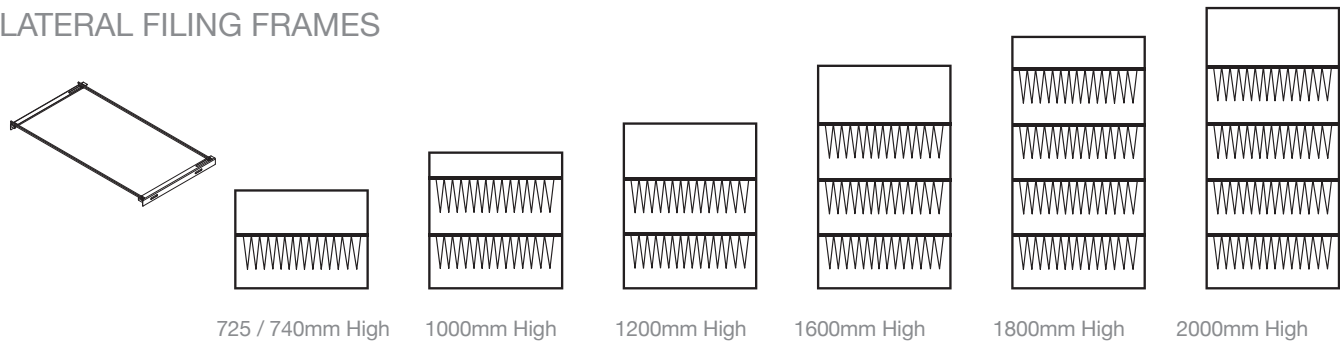
A4 BOX FILES



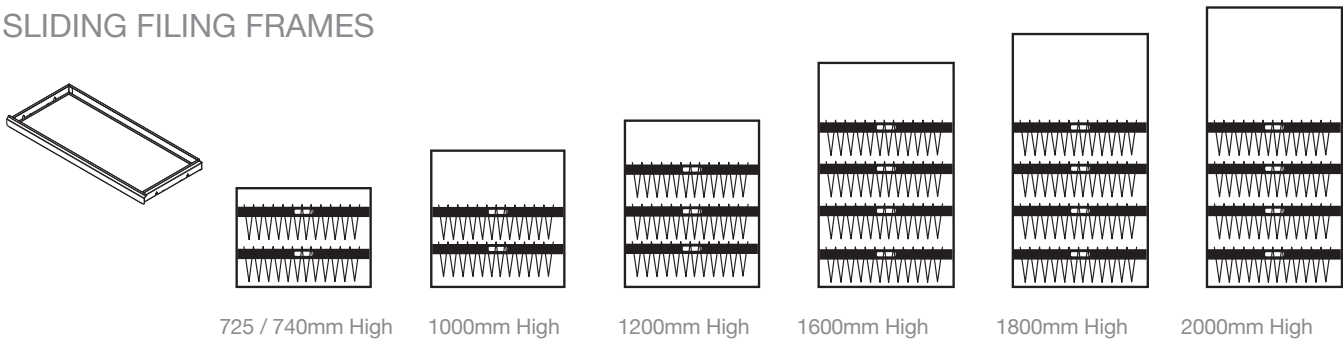
FOOLSCAP BOX FILES



LATERAL FILING FRAMES



SLIDING FILING FRAMES



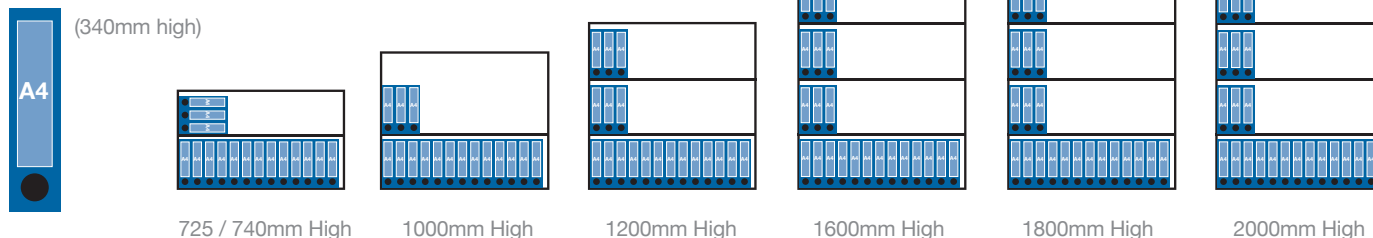
Not all products include internal fitting as standard. Please refer to individual product codes.
Box files assumed to be 70mm wide. Box file sizes are estimate and different brands may vary.

SIGNATURE 1000MM WIDE

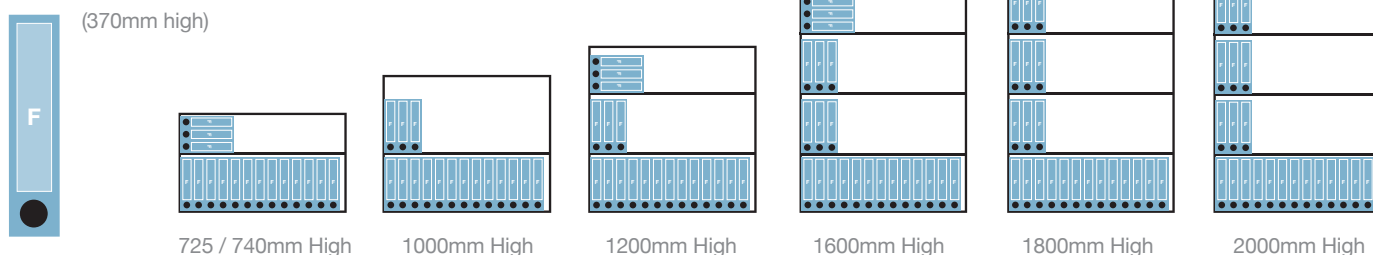
Illustrations show 1000mm wide units hold 13 box files per shelf.

Please note, for Tambour cupboards 1000mm wide, unit holds 10 box files per shelf.

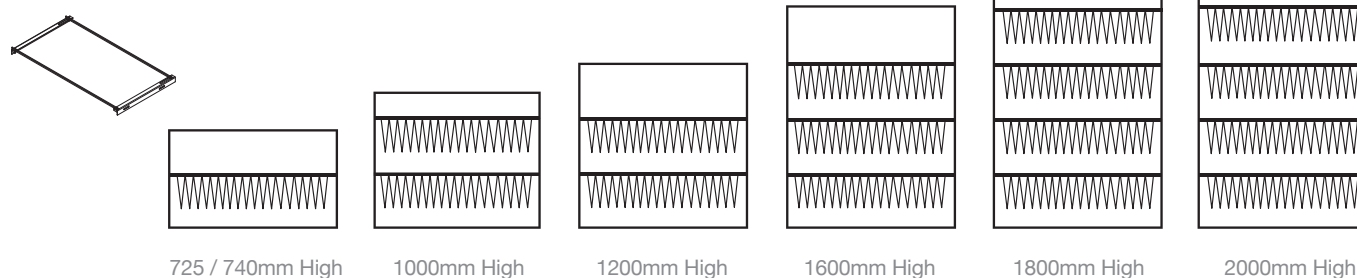
A4 BOX FILES



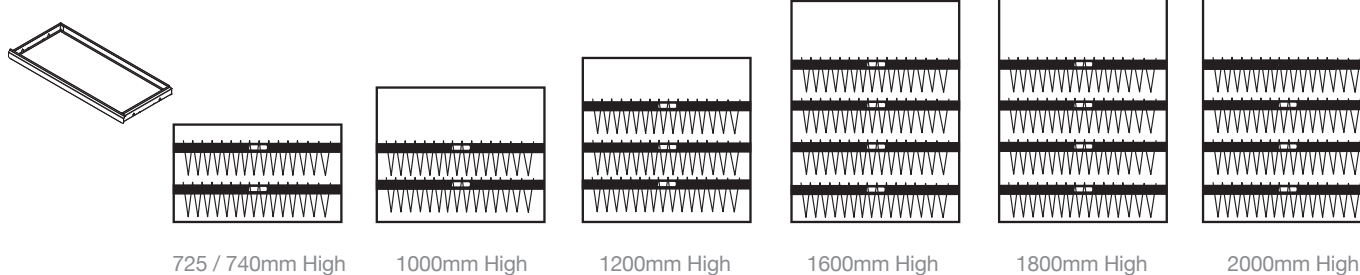
FOOLSCAP BOX FILES



LATERAL FILING FRAMES



SLIDING FILING FRAMES



Not all products include internal fitting as standard. Please refer to individual product codes. Box files assumed to be 70mm wide. Box file sizes are estimate and different brands may vary.

SIGNATURE RECYCLING

Features & Details

- Integrated solutions within the Signature range.
- Helps encourage environmental waste recycling within the workplace.
- Available with a choice of waste collection options or suitable for customer's own system.

SPECIFICATION

- Manufactured to the same specification as the Signature range.
- 2 hinged door opening.
- Silver bar handles as standard (other handle options are available).
- Two, or three waste apertures (lined with metal rim).



QUICK SHIP

Not Available

RECYCLING UNITS

Please add the base and feet option followed by the wood suffix to your code when ordering eg: **SRRC80WBI**

Wood finishes are heat, stain and scratch resistant when used for their intended purposes.

GROUP A

Base & Feet



W White

S Silver

Wood Finishes



BI Birch

MA Maple

WA Walnut

NN Natural
Nebraska Oak

BE Beech

WH White

LO Light Oak

GN Grey
Nebraska Oak

QS: Quick Ship | **GROUP A:** Subject to a longer lead time.

- Available
- Not Available

DOUBLE RECYCLING UNIT



Recycling Unit / Upstand	W x D x H (mm)	Code	QS	Grp A
Double Recycling Unit	800 x 500 x 1000	SRRC1080	○	●
Upstand	750 x 25 x 120	SRRC80UP1	○	●

Includes metal, powder coated rim for each aperture.

Internal fittings are available as optional extras, please speak to our Customer Services team.

QS: Quick Ship | **GROUP A:** Subject to a longer lead time.

- Available
- Not Available

TRIPLE RECYCLING UNIT



Recycling Unit / Upstand	W x D x H (mm)	Code	QS	Grp A
Triple Recycling Unit	1000 x 500 x 1000	SRRC1010	○	●
Upstand	950 x 25 x 120	SRRC10UP1	○	●

Includes metal, powder coated rim for each aperture.

Internal fittings are available as optional extras, please speak to our Customer Services team.



SIGNATURE GROW

Features & Details

- Integrated planters for the proven benefits of biophilia in the workplace.
- Standard Unit is not lined. Liner options available upon request.
- Custom design solutions available.
- Ideal for preventing files and 'clutter' on top of storage units.

SPECIFICATION

- Designed for use with the Signature storage range.
- Manufactured from 18mm grade E1 malamine faced high density particle board.
- Suitable for two door cupboards 800mm or 1000mm wide.



QUICK SHIP

Not Available

GROW UNITS

Please add the base and feet option followed by the wood suffix to your code when ordering eg: SRGR805**WBI**

Wood finishes are heat, stain and scratch resistant when used for their intended purposes.

Standard planters are not lined and only suitable for 'faux' plants. Details of options for suitable liners are available from our Bespoke department.

GROUP A

Base & Feet



W White

S Silver

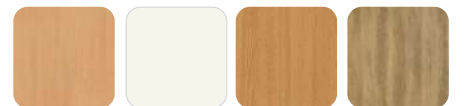
Wood Finishes



BI Birch

MA Maple

WA Walnut

NN Natural
Nebraska Oak

BE Beech

WH White

LO Light Oak

GN Grey
Nebraska Oak

QS: Quick Ship | **GROUP A:** Subject to a longer lead time.

● Available

○ Not Available

GROW UNIT



Price for Grow unit only. An existing Signature Cupboard top is removed and replaced with the Grow unit (fittings supplied).

Grow Unit	W x D x H (mm)	Code	QS	Grp A
800 Wide				
	800 x 500 x 175	SRGR805	○	●
	800 x 600 x 175	SRGR806	○	●
1000 Wide				
	1000 x 500 x 175	SRGR105	○	●
	1000 x 600 x 175	SRGR106	○	●



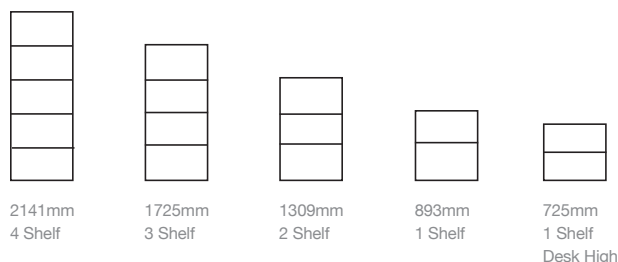
INFINITY





Features & Details

- Modular storage and display system.
- Wide choice of finishes, heights & door options.
- Ideal for desk side storage or larger configurations.



UNIT SPECIFICATION (1 – 4 SHELVES)

- 25mm unit tops made from grade E1 melamine faced high density particle board.
- 18mm side and back panels.
- Units are suitable for box files.
- 25mm shelves.
- All units are supplied with the number of shelves illustrated, and plastic levelling wedges.
- Fixed or removable shelves.
- Locking shelf fixings provide extra rigidity and prevent outward bowing of the base units.

DESK HIGH UNITS

- 18mm side and back panels.
- 18mm shelves to accommodate A4 folders.
- Adjustable levelling feet are supplied.
- Units are not suitable for box files.
- Silver effect bow handles.

WOOD EFFECT DOORS

- 18mm doors made from grade E1 melamine faced high density particle board.
- Silver effect bow handles.
- Doors are lockable (excluding glass doors).
- Soft closing hinges are available.

GLASS DOORS

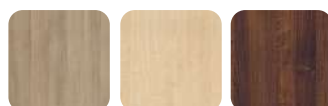
- Doors are made from toughened glass to comply with the safety standard BS6206A.
- Silver effect bow handles.
- Frosted or Clear glass.
- Soft closing hinges are available.

NB: Where full length doors are not specified, a fixed shelf is required for positioning below upper doors and above lower doors. The fixed shelves are required to provide an attachment for the latch.

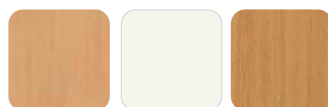


QUICK SHIP

Wood Finishes



BI Birch MA Maple WA Walnut



BE Beech WH White LO Light Oak

GROUP A

Wood Finishes



NN Natural Nebraska Oak GN Grey Nebraska Oak

Please add the wood suffix to your code when ordering eg:
IFBU89S1BI

Wood finishes are heat, stain and scratch resistant when used for their intended purposes.

QS: Quick Ship | **GROUP A:** Subject to a longer lead time.

● Available
○ Not Available



INDIVIDUAL ITEMS

Infinity has been designed as a versatile, modular storage range.

To create your own design combination, simply choose your base unit, followed by a selection of door options. Additional shelves and soft close hinges are also available.



BOOKCASES (BASE UNIT)

Bookcase	W x D x H (mm)	Code	QS	Grp A
Desk High, 1 Shelf	800 x 350 x 725	IFBU72DH	●	●
1 Shelf	800 x 330 x 893	IFBU89S1	●	●
2 Shelves	800 x 330 x 1309	IFBU13S2	●	●
3 Shelves	800 x 330 x 1725	IFBU17S3	●	●
4 Shelves	800 x 330 x 2141	IFBU21S4	●	●

All units are supplied with the number of shelves illustrated.

4 shelf units must be secured to the wall.



WOOD EFFECT DOORS

Lower Doors – Desk High, 1, 2, 3 and 4 Shelves

Upper Doors – 1 and 2 Shelves

Wood Effect Doors	W x H (mm) Per door	Code	QS	Grp A
1 Shelf, Desk High Door	395 x 663	IFLD66DH	●	●
1 Shelf, Upper Door	395 x 828	IFUD82S1	●	●
1 Shelf, Lower Door	395 x 828	IFLD82S1	●	●
2 Shelves, Upper Door	395 x 1244	IFUD12S2	●	●
2 Shelves, Lower Door	395 x 1244	IFLD12S2	●	●
3 Shelves, Lower Door	395 x 1660	IFLD16S3	●	●
4 Shelves, Lower Door	395 x 2076	IFLD20S4	●	●

QS: Quick Ship | GROUP A: Subject to a longer lead time.

- Available
- Not Available



Clear Glass – 1 and 2 Shelves

Opaque Glass – 1 and 2 Shelves

GLASS DOORS

Glass Doors	W x H (mm) Per door	Code	QS	Grp A
1 Shelf, Clear Glass	395 x 828	IFGD82S1CL	●	●
1 Shelf, Opaque Glass	395 x 828	IFGD82S1OP	●	●
2 Shelves, Clear Glass	395 x 1244	IFGD12S2CL	●	●
2 Shelves, Opaque Glass	395 x 1244	IFGD12S2OP	●	●

SHELVES

Shelves	W x H x D (mm)	Description	Code	QS	Grp A
1 Shelf	762 x 306 x 18	For desk high unit	IFDH18SH1	●	●
1 Shelf	762 x 306 x 25	For all units (except Desk High)	IFAC25SH1	●	●
Fixed Shelf	762 x 306 x 25	Required for positioning below upper door and above lower doors where full length doors are not used.	IFAC25FX	●	●

Where full length doors are not specified, a fixed shelf is required for positioning below upper doors and above lower doors. The fixed shelves are required to provide an attachment for the latch.

SOFT CLOSE HINGES

Description	Code	QS	Grp A	RRP
Two Pair Pack	IFHINGE2	●	●	
Three Pair Pack	IFHINGE3	●	●	



Bow Handles
(as Standard)



Mosaic Handles



Matrix Handles



Oval Handles



Bar Handles

HANDLES

Handles	Description	Colour	Code	QS	Grp A
Bow Handles	Pack of 10	Silver	ACBOWS	●	●
Mosaic Handles	Pack of 10	Silver	ACMOSAICS	●	●
Matrix Handles	Pack of 10	Silver	ACMATRIXS	●	●
Oval Handles	Pack of 10	Silver	ACOVALS	●	●

QS: Quick Ship | **GROUP A:** Subject to a longer lead time.

● Available
○ Not Available



INFINITY COMBINATION UNITS

Infinity is available in a variety of ready-made combinations.

DESK HIGH UNITS



Bookcase



Combination 1

Combination	W x D x H (mm)	Description	Code	QS	Grp A
Bookcase	800 x 350 x 725	1 shelf	IFBU72DH	●	●
1	800 x 350 x 725	1 shelf desk high with full wooden doors	IFC172DH	●	●

1 SHELF UNITS



Bookcase



Combination 1

Combination	W x D x H (mm)	Description	Code	QS	Grp A
Bookcase	800 x 330 x 893	1 shelf	IFBU89S1	●	●
1	800 x 330 x 893	1 shelf with full wooden doors	IFC189S1	●	●

2 SHELF UNITS



Bookcase



Combination 1



Combination 2

Combination	W x D x H (mm)	Description	Code	QS	Grp A
Bookcase	800 x 330 x 1309	2 shelves	IFBU13S2	●	●
1	800 x 330 x 1309	2 shelves, 1 shelf behind wooden doors	IFC113S2	●	●
2	800 x 330 x 1309	2 shelves full wooden doors	IFC213S2	●	●

3 SHELF UNITS



Bookcase



Combination 1



Combination 2



Combination 3



Combination 4



Combination 5



Combination 6

Combination	W x D x H (mm)	Description	Code	QS	Grp A
Bookcase	800 x 330 x 1725	3 shelves	IFBU17S3	●	●
1	800 x 330 x 1725	3 shelves, 1 shelf behind wooden doors	IFC117S3	●	●
2	800 x 330 x 1725	3 shelves, 2 shelves behind wooden doors	IFC217S3	●	●
3	800 x 330 x 1725	3 shelves with full wooden doors	IFC317S3	●	●
4	800 x 330 x 1725	3 shelves, 1 shelf behind wooden doors & 2 behind clear glass doors	IFC1117S3	●	●
5	800 x 330 x 1725	3 shelves, 1 shelf behind wooden doors & 2 behind opaque glass doors	IFC1217S3	●	●
6	800 x 330 x 1725	3 shelves, 1 shelf behind wooden doors & 2 behind wooden doors	IFC1617S3	●	●

QS: Quick Ship | GROUP A: Subject to a longer lead time.

● Available
○ Not Available



4 SHELF UNITS

4 shelf units must be secured to the wall.



Combination	W x D x H (mm)	Description	Code	QS	Grp A
Bookcase	800 x 330 x 2141	4 shelves	IFBU21S4	●	●
1	800 x 330 x 2141	4 shelves, 1 shelf behind wooden doors	IFC121S4	●	●
2	800 x 330 x 2141	4 shelves, 2 shelves behind wooden doors	IFC221S4	●	●
3	800 x 330 x 2141	4 shelves, 3 shelves behind wooden doors	IFC321S4	●	●
4	800 x 330 x 2141	4 shelves with full wooden doors	IFC421S4	●	●
5	800 x 330 x 2141	4 shelves, 1 shelf behind lower doors & 2 behind upper doors	IFC1321S4	●	●
6	800 x 330 x 2141	4 shelves, 1 shelf behind wooden doors & 2 shelves behind clear glass doors	IFC1421S4	●	●
7	800 x 330 x 2141	4 shelves, 1 shelf behind wooden doors & 3 shelves behind clear glass doors	IFC1521S4	●	●
8	800 x 330 x 2141	4 shelves, 1 shelf behind wooden doors & 2 shelves behind opaque glass doors	IFC1621S4	●	●
9	800 x 330 x 2141	4 shelves, 1 shelf behind wooden doors & 3 behind opaque glass doors	IFC1721S4	●	●
10	800 x 330 x 2141	4 shelves, 1 behind lower wooden doors & 3 behind upper wooden doors	IFC1921S4	●	●
11	800 x 330 x 2141	4 shelves, 2 behind lower wooden doors & 2 behind clear glass doors	IFC2021S4	●	●
12	800 x 330 x 2141	4 shelves, 2 behind wooden doors & 2 behind opaque glass doors	IFC2121S4	●	●
13	800 x 330 x 2141	4 shelves, 2 behind lower wooden doors & 2 behind upper wooden doors	IFC2221S4	●	●

LIBERTY LOCKERS





Features & Details

- Robust, secure construction.
- Choice of finishes and locking options.
- Custom design service available.
- 3 unit heights in 3, 6 or 9 door configurations.
- 25mm top and base.
- Locking as standard supplied with 2 keys or an optional electronic keypad available.

SPECIFICATION

- Manufactured from grade E1 melamine-faced high density particleboard.
- 25mm top and base.
- 18mm side and doors.
- Locking as standard supplied with 2 keys.
- Polypropylene feet.
- Built-in height levelling mechanism.
- Electronic keypad, RFID and Combi lock options available upon request.

DELIVERY

- All Liberty lockers are shipped assembled.



QUICK SHIP

Not Available

Please add the wood suffix to your code when ordering eg: LYLO80S2**MA**

Wood finishes are heat, stain and scratch resistant when used for their intended purposes.

GROUP A

Wood Finishes



BI Birch

MA Maple

WA Walnut

NN Natural
Nebraska Oak



BE Beech

WH White

LO Light Oak

GN Grey
Nebraska Oak

QS: Quick Ship | **GROUP A:** Subject to a longer lead time.

● Available
○ Not Available

SINGLE COLUMN



W x D x H (mm)	Code	QS	Grp A
400 x 500 x 840	2 Door LYLO40S2	○	●
400 x 500 x 1220	3 Door LYLO40S3	○	●
400 x 500 x 1600	4 Door LYLO40S4	○	●

DOUBLE COLUMN



W x D x H (mm)	Code	QS	Grp A
800 x 500 x 840	4 Door LYLO80D4	○	●
800 x 500 x 1220	6 Door LYLO80D6	○	●
800 x 500 x 1600	8 Door LYLO80D8	○	●

TRIPLE COLUMN



W x D x H (mm)	Code	QS	Grp A
1200 x 500 x 840	6 Door LYLO12T6	○	●
1200 x 500 x 1220	9 Door LYLO12T9	○	●
1200 x 500 x 1600	12 Door LYLO12T12	○	●



PIGEONHOLES



Features & Details

- Tidy, versatile storage.
- Durable and sturdy.
- Alternative configurations and a custom design service are available.

SPECIFICATION

- Manufactured from grade E1 melamine faced high density particleboard.
- 25mm top and base.
- 18mm sides, shelves and doors.
- Polypropylene feet.
- The feet at the front of each unit have an in-built height levelling mechanism.
- All Pigeonhole compartment sizes will fit A4 files.

DELIVERY

All Pigeonhole units are shipped assembled.

QUICK SHIP

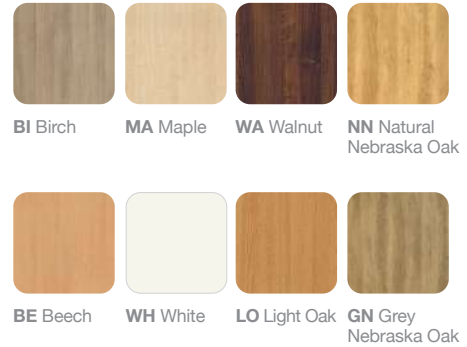
Not Available

Please add the wood suffix to your code when ordering eg: PH20MA

Wood finishes are heat, stain and scratch resistant when used for their intended purposes.

GROUP A

Wood Finishes



1200 Wide



1000 Wide



800 Wide



538 Wide

PIGEONHOLE UNITS

Compartment sizes:
230 x 363 x 120mm high

W x D x H (mm)	Code	QS	Grp A
538 x 400 x 1900	PH20	○	●
786 x 400 x 1900	PH30	○	●
1034 x 400 x 1900	PH40	○	●
1285 x 400 x 1900	PH50	○	●

A COMMITMENT TO SERVICE

Dedicated Customer Service

The values of Integrity, Commitment, Development, Accountability and Teamwork underpin the culture and aspirations of the Company. We strive to design and develop an extensive portfolio of quality products which combine aesthetics and practicality to offer Best Value solutions. The ongoing monitoring of every aspect of the business ensures we are able to implement continuous improvements to maintain our determined commitment to customer service.



Inhouse Delivery Fleet

We operate and manage our own delivery fleet and are targeted for accurate, on time order fulfillment. Rapid turnaround is guaranteed by our weekly scheduled deliveries and, on many items, we also offer a 'Quick Ship' service. Standard deliveries are free of charge with next day delivery on stocked items or customer collection (with 24 hours' notice) also available.

- Quick Ship: Products delivered within 5 working days from your order deadline date.
- Group A: Products subject to a longer lead time (typically 3 weeks).



Extensive Stock Holding

Our 200,000 square feet manufacturing base includes an extensive warehousing facility. We hold stock of an estimated 50,000 items including raw materials and finished goods.

This substantial financial investment provides a further demonstration of our determined commitment to the highest levels of customer service.

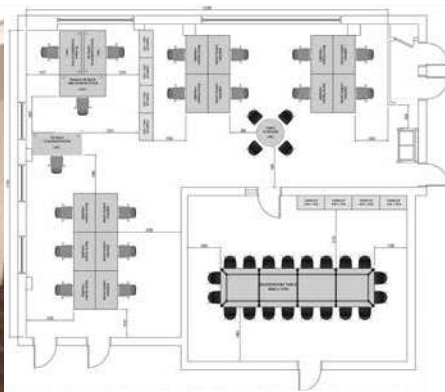


INHOUSE EXPERTISE

Bespoke Design

Unlike many manufacturers, we are able to develop customised solutions to match each client's precise requirements. With its own production unit and dedicated team, our Bespoke department can design and manufacture products from original 'sketches' or develop existing range items to customised specifications.

Your dedicated account manager, together with a member of the Bespoke team, will work with you to develop a solution to match your requirement and budget.



Planning & Design

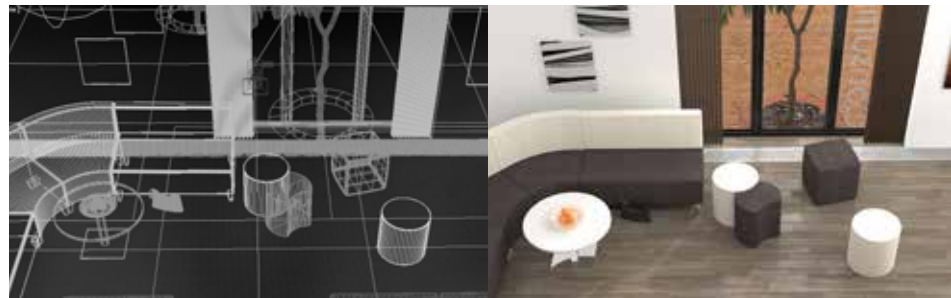
Our highly experienced designers are available to offer expert space planning and design services. Working from simple sketches or architect plans, we can recommend product choice, configurations and finishes to match desired outcomes and available budget.

We are able to advise regarding effective space utilisation and also work collaboratively to consider lighting, team requirements, storage as well as existing building services and future reconfigurations of any environments.

CGI Expertise

We have an extensive library of product images together with a portfolio of 3D CAD files. Customers can download files from our web site or upon request.

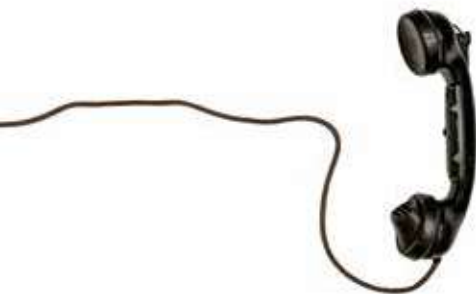
The wide choice of CGI, photo-realistic room scenes can help visualise proposed interiors, colours, and designs.



Sales & Customer Support

We know relationships are important. Our nationwide sales team offers 'face to face' meetings to provide expert support, advice and guidance as well as facilitating access to our extensive inhouse services including customised marketing materials, product samples and collaborative events.

Each and every order is carefully monitored and tracked by our customer services team. Fully trained advisors provide a dedicated point of contact to manage queries and requests as well as full after-sales support.



A COMMITMENT TO QUALITY

Continuous investment in facilities and training, coupled with a dedicated workforce and strong supplier relationships, ensures the quality, consistency and reliability our customers expect. The management and measurement of our internal processes and procedures drives our quest for development and improvement and, therefore, ongoing customer satisfaction.

We have an established reputation for the supply of robust, quality products. We design and manufacture to comply with relevant British and international standards – covering dimensions; ergonomics; strength & stability; moving parts; fire regulations; and electrical systems. The inherent strength and durability means that our products will withstand the rigours of daily ‘wear and tear’ thus extending the lifecycle. Our furniture includes a 7-year guarantee (unless specified).

Copies of our credentials and certifications are available at leeandplumpton.co.uk



Quality Management System BS EN ISO 9001



Environmental Management System BS EN ISO 14001



Occupational Health And Safety Management System OHSAS 45001 (OH&S)



Commercial Interiors U.K. (CIUK)



Commercial Furniture Advisory Service (CFAS)



Members Of Furniture Industry Research Association (FIRA)



RESPONSIBLE MANUFACTURING

As a major manufacturer, we recognise our responsibility to consider all areas of our business in terms of environmental impact. From management, administration and product design through to facilities management and logistics together with manufacturing processes and procedures, we strive to introduce positive changes to protect the planet.

Our efforts embrace the full spectrum of business activities including reductions in carbon emissions through to waste prevention, recycling initiatives, transportation, investment in solar power and procurement practices. Sustainability and circularity principles are embedded within our product design and development processes. We are committed to minimising our carbon impact and working towards a greener future.

Environmental Management

We measure and assess our efforts through our integrated Environmental Management System. Registered to ISO 14001: 2015, our system incorporates clear objectives which are monitored and measured through a documented programme with regular reviews for continuous improvement.



Chain of Custody

Our Chain of Custody certification (COC) with the Forest Stewardship Council® (FSC®) represents the unbroken path that certificated products take, from the sustainably managed forests of origin, to the consumer.



The mark of responsible forestry

Sustainability

Created in 2006, the Furniture Industry Sustainability Programme (FISP) has become established as the furniture industry forum on all environmental and sustainability issues. These considerations relate to all aspects of the industry's business, from purchasing and procurement through to end of product life, including social, ethical and employment concerns as well as waste, energy and emissions.

We have achieved full membership of FISP and this enables us to focus on reducing our social and environmental impact. We have been proud members of the Furniture Industry Sustainability Programme (FISP) since 2007. Membership is subject to regular independent re-audits to monitor our continuing commitment.



Energy Management

Our energy management strategy includes a number of practices to minimise usage throughout all areas of the business. In addition, in the last year our solar panels have generated over 160,000 Kwh of electricity. Nearly half of the output is returned to the National Grid – sufficient to power 26 three/quarter bedroom homes for a year.



LEE & PLUMPTON

Bunns Bank | Attleborough Norfolk | NR17 1QD
T: 01953 453830 | E: sales@leeandplumpton.co.uk

leeandplumpton.co.uk



@LEEANDPLUMPTON

October 2022_v1.1

E&OE October 2022

Images featured within this brochure are for illustrative purposes and appearances may vary from those shown. Due to our ongoing initiatives, Lee & Plumpton Ltd. reserve the right to change, modify or delete products at any time without notification.

