



LEE & PLUMPTON

Inspiration At Work

SPECIALIST DESKING



STUDYHUB



IN THIS SPACE...
WE ARE **REAL**
WE MAKE MISTAKES
WE LEARN
WE **ACCEPT**
SECOND CHANCES
MAY NOT COME
WE **HAVE**
FUN
WE **ENJOY** THIS PLACE

Features & Details

- Quiet, individual workspaces.
- Designed to allow focused concentration.
- Custom colour combinations and bespoke solutions available.
- Ideal for schools, libraries, IT suites and touchdown desking.



SPECIFICATION

- 25mm top made from grade E1 melamine faced high density particle board.
- Height levelling feet are supplied.
- All desks are supplied with one round, grey coloured cable port.
- Pinnable fabric boards are available to purchase separately.

ACCESSORY OPTIONS

- Fabric boards, port hole power with USB charging, data and media and CPU holders.
- Alternative colour options are available from the Camira Cara, Carlow or Lucia range, please refer to page 224.

QUICK SHIP

Not available

Wood finishes are heat, stain and scratch resistant when used for their intended purposes.

FABRIC BOARDS

Standard Fabrics



BK Black

BL Blue

RB Ruby

GY Grey

Please add the metal and wood suffix to your code when ordering eg: SHBS60**RBK**

GROUP A

Wood Finishes

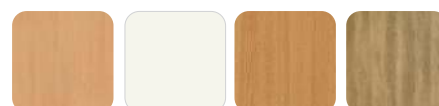


BI Birch

MA Maple

WA Walnut

NN Natural
Nebraska Oak



BE Beech

WH White

LO Light Oak

GN Grey
Nebraska Oak

QS: Quick Ship | **GROUP A:** Subject to a longer lead time.

● Available
○ Not Available

STUDYHUB

STUDYHUB SINGLE



W x D x H (mm)	Code	QS	Grp A
800 x 800 x 1230	SHSB80	○	●
1000 x 800 x 1230	SHSB10	○	●

STUDYHUB EXTENSION



W x D x H (mm)	Code	QS	Grp A
775 x 800 x 1230	SHEB80	○	●
975 x 800 x 1230	SHEB10	○	●

FABRIC BOARDS



W x H (mm)	Standard colours	QS	Grp A
600 x 200	SHBS60R	○	●
800 x 200	SHBS80R	○	●



QS: Quick Ship | **GROUP A:** Subject to a longer lead time.

● Available
○ Not Available

PORT HOLES & CPU HOLDERS

PORT HOLES



Portholes can be fitted to the cable port to provide power for laptops, or charging points for mobile phones and tablets. A CPU holder is available if you intend to use a desktop PC.

Description	Colour	Code	QS	Grp A
Port Hole <ul style="list-style-type: none"> 1 x Power socket and 1m mains cable Power socket 3.15A individually fused with 1m mains cable to 3 pin connector 	Black Grey White	ACPORTSOCKBK ACPORTSOCKGY ACPORTSOCKWH	○	●
Port Hole with USB Socket <ul style="list-style-type: none"> 1 x Power socket, 1 x USB socket, 1m mains cable, 2m USB lead Power socket 3.15A individually fused with 1m mains cable to 3 pin connector and 2m USB lead. 	Black Grey White	ACPORTUSBBK ACPORTUSBGY ACPORTUSBWH	○	●
Power Hole with RJ45 Cat6 Socket <ul style="list-style-type: none"> 1 x Power socket, 1 x RJ45 Cat6 socket, 1m mains cable, 3m data lead Power socket 3.15A individually fused with 1m mains cable to 3 pin connector with 3m data lead. 	Black, Grey White	ACPORTRJ45BK ACPORTRJ45GY ACPORTRJ45WH	○	●

Port holes feature individual fuse and are independently certified to BS 5733.

Easy to retrofit, incorporates an under desk, hand tightened barrel nut to fix unit in place. All power and data cables exit from the base of the unit.

CPU HOLDER 01



Description	Colour	Code	QS	Grp A
C3 large CPU holder for fixing to desk top, adjustable W 80 – 220mm, H 300 – 530mm. 5 Year Guarantee.	Black, Silver & White	ACCPUHOLDL	○	●

Simply add the colour suffix to your code when ordering: **B** Black, **S** Silver, **W** White.

CPU HOLDER 02



Description	Colour	Code	QS	Grp A
C6 universal adjustable belt CPU holder for fixing under the desk top. 5 Year Guarantee.	Black	ACCPUHOLDUNI	○	●

MICRO CPU HOLDER



Description	Colour	Code	QS	Grp A
Ideal for mini CPUs. Can be fitted to pole or arm, allows easy access to ports. Can also be fixed to any part of the desk. Fully adjustable for different CPU sizes. 5 Year Guarantee.	Black, Silver & White	ACCPUHOLDM	○	●

Simply add the colour suffix to your code when ordering: **B** Black, **S** Silver, **W** White.

SMARTTOP



Features & Details

- Secure storage for monitor, keyboard & mouse.
- 'Lid' mechanism provides access to a lockable compartment under the desk surface.
- Compact design.
- Dual use desk solution.
- Ideal for classrooms & training suites and hot desk environments.



SPECIFICATION

- Lid constructed from 18mm MFC.
- 25mm MDF top provides added durability.
- 18mm MFC modesty panel.
- Double cantilever end frame adds strength and stability.
- Silver or white finish end frame.
- Fully locking secure mechanism.
- Levelling feet as standard.
- Optional single and double CPU stands available.

RECOMMENDATIONS

- Recommended standard flat screen monitor size is between 16-19 inches. Maximum monitor dimensions **W**440 x **D**65 x **H**350mm.
- Weight loading capacity of up to 5kg.
- 2 year guarantee on monitor mechanism.
- ILOA swivel saddle stool is an ergonomic addition (see pages 157-160).



QUICK SHIP

Not available

Wood finishes are heat, stain and scratch resistant when used for their intended purposes.

Please add the metal and wood suffix to your code when ordering eg: SMRE96SIL**SBE**

GROUP A

Metal Finishes



S Silver

W White

Wood Finishes



BE Beech

MA Maple

WH White

QS: Quick Ship | **GROUP A:** Subject to a longer lead time.

● Available
○ Not Available

SMARTTOP

SMARTTOP SINGLE, CENTRAL



W x D x H (mm)		Code	QS	Grp A
1200 x 600 x 725	Central	SMRE12SIC	○	●

SMARTTOP SINGLE (900MM)



Left Hand



Right Hand

W x D x H (mm)		Code	QS	Grp A
900 x 600 x 725	Left Hand	SMRE96SIL	○	●
900 x 600 x 725	Right Hand	SMRE96SIR	○	●

SMARTTOP DOUBLE (1650MM)



Left Hand



Right Hand

W x D x H (mm)		Code	QS	Grp A
1650 x 600 x 725	Left Hand	SMRE16DBL	○	●
1650 x 600 x 725	Right Hand	SMRE16DBR	○	●

SMARTTOP DOUBLE (1800MM)



Left Hand



Right Hand

W x D x H (mm)		Code	QS	Grp A
1800 x 600 x 725	Left Hand	SMRE18DBL	○	●
1800 x 600 x 725	Right Hand	SMRE18DBR	○	●

QS: Quick Ship | **GROUP A:** Subject to a longer lead time.

- Available
- Not Available

CPU STANDS



Single Stand



Double Stand

CPU Option	Description	Colour	Code	QS	Grp A
Single Stand	578 x 225 x 62, attaches to bottom of cantilever end frame.	—	STSSSL	○	●
Double Stand	578 x 426 x 62, attaches to bottom of cantilever end frame.	—	STDSSL	○	●

CPU HOLDER 01



Description	Colour	Code	QS	Grp A
C3 large CPU holder for fixing to desk top, adjustable in W 80 – 220mm, H 300 – 530mm. 5 Year Guarantee.	Black, Silver & White	ACCPUHOLDL	○	●

Excludes double SmartTop 1650mm desks.

Simply add the colour suffix to your code when ordering: **B** Black **S** Silver **W** White.



RECEPTION UNITS





Features & Details

- Clean, simple solutions for practical reception spaces.
- Robust, sturdy construction.
- Cable management options.
- Bespoke and made-to-measure available.
- 25mm worksurfaces.



SPECIFICATION

RECEPTION UNIT

- 25mm top made from grade E1 melamine faced high density particle board.
- Full depth, 18mm modesty panels.
- Single grey cable port.
- Pigeonhole system.
- Height levelling feet.

RECEPTION TABLE

- 25mm or 18mm top made from grade E1 melamine faced high density particle board.
- Tables available with square metal legs or cross base.

QUICK SHIP

Metal & Wood Finishes



G Grey /
BE Beech

G Grey /
MA Maple

G Grey /
LO Light Oak



B Brown /
LO Light Oak

Wood finishes are heat, stain and scratch resistant when used for their intended purposes.

GROUP A

The finishes listed left are also available on a longer lead time if required.

Please add the metal and wood suffix to your code when ordering
eg: RUCR18PLGBE



QS: Quick Ship | **GROUP A:** Subject to a longer lead time.

● Available
○ Not Available



RECEPTION UNIT



Left hand shown

W x W2 x D x D2 x H (mm)	LH	RH	QS	Grp A
1800 x 1200 x 800 x 600 x 1177	RUCR18PL	RUCR18PR	●	●

SQUARE TABLE



Square Legs

W x D x H (mm)	Code	QS	Grp A
600 x 600 x 385, 18mm Top	TBSR60SQ	●	●

ROUND TABLE



Square Legs

W x D x H (mm)	Code	QS	Grp A
750 x 385, 18mm Top	TBRR75SQ	●	●

CROSS BASE TABLE



Panel Base

W x D x H (mm)	Code	QS	Grp A
600 x 600 x 396, 25mm Top	TBSR60P	●	●
800 x 800 x 396, 25mm Top	TBSR80P	●	●

For more table options see from page 171.



A COMMITMENT TO SERVICE

Dedicated Customer Service

The values of Integrity, Commitment, Development, Accountability and Teamwork underpin the culture and aspirations of the Company. We strive to design and develop an extensive portfolio of quality products which combine aesthetics and practicality to offer Best Value solutions. The ongoing monitoring of every aspect of the business ensures we are able to implement continuous improvements to maintain our determined commitment to customer service.



Inhouse Delivery Fleet

We operate and manage our own delivery fleet and are targeted for accurate, on time order fulfillment. Rapid turnaround is guaranteed by our weekly scheduled deliveries and, on many items, we also offer a 'Quick Ship' service. Standard deliveries are free of charge with next day delivery on stocked items or customer collection (with 24 hours' notice) also available.

- Quick Ship: Products delivered within 5 working days from your order deadline date.
- Group A: Products subject to a longer lead time (typically 3 weeks).



Extensive Stock Holding

Our 200,000 square feet manufacturing base includes an extensive warehousing facility. We hold stock of an estimated 50,000 items including raw materials and finished goods.

This substantial financial investment provides a further demonstration of our determined commitment to the highest levels of customer service.

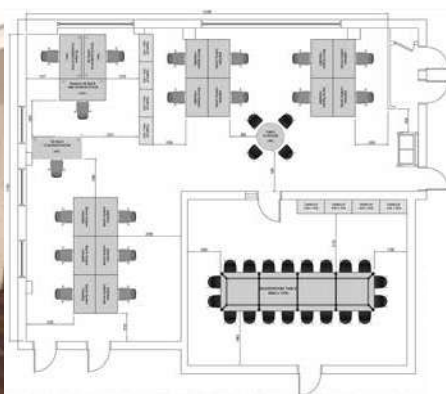


INHOUSE EXPERTISE

Bespoke Design

Unlike many manufacturers, we are able to develop customised solutions to match each client's precise requirements. With its own production unit and dedicated team, our Bespoke department can design and manufacture products from original 'sketches' or develop existing range items to customised specifications.

Your dedicated account manager, together with a member of the Bespoke team, will work with you to develop a solution to match your requirement and budget.



Planning & Design

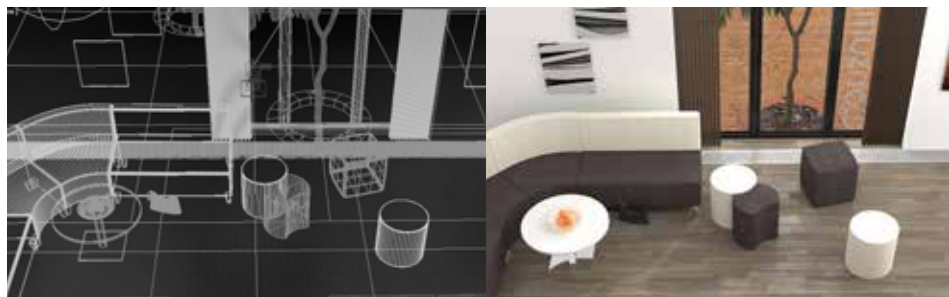
Our highly experienced designers are available to offer expert space planning and design services. Working from simple sketches or architect plans, we can recommend product choice, configurations and finishes to match desired outcomes and available budget.

We are able to advise regarding effective space utilisation and also work collaboratively to consider lighting, team requirements, storage as well as existing building services and future reconfigurations of any environments.

CGI Expertise

We have an extensive library of product images together with a portfolio of 3D CAD files. Customers can download files from our web site or upon request.

The wide choice of CGI, photo-realistic room scenes can help visualise proposed interiors, colours, and designs.



Sales & Customer Support

We know relationships are important. Our nationwide sales team offers 'face to face' meetings to provide expert support, advice and guidance as well as facilitating access to our extensive inhouse services including customised marketing materials, product samples and collaborative events.

Each and every order is carefully monitored and tracked by our customer services team. Fully trained advisors provide a dedicated point of contact to manage queries and requests as well as full after-sales support.

A COMMITMENT TO QUALITY

Continuous investment in facilities and training, coupled with a dedicated workforce and strong supplier relationships, ensures the quality, consistency and reliability our customers expect. The management and measurement of our internal processes and procedures drives our quest for development and improvement and, therefore, ongoing customer satisfaction.

We have an established reputation for the supply of robust, quality products. We design and manufacture to comply with relevant British and international standards – covering dimensions; ergonomics; strength & stability; moving parts; fire regulations; and electrical systems. The inherent strength and durability means that our products will withstand the rigours of daily ‘wear and tear’ thus extending the lifecycle. Our furniture includes a 7-year guarantee (unless specified).

Copies of our credentials and certifications are available at leeandplumpton.co.uk



Quality Management
System BS EN ISO
9001



Environmental Management
System BS EN ISO 14001



Occupational Health And
Safety Management System
OHSAS 45001 (OH&S)



Commercial Interiors
U.K.
(CIUK)



Commercial Furniture
Advisory Service (CFAS)



Members Of Furniture
Industry Research
Association (FIRA)



RESPONSIBLE MANUFACTURING

As a major manufacturer, we recognise our responsibility to consider all areas of our business in terms of environmental impact. From management, administration and product design through to facilities management and logistics together with manufacturing processes and procedures, we strive to introduce positive changes to protect the planet.

Our efforts embrace the full spectrum of business activities including reductions in carbon emissions through to waste prevention, recycling initiatives, transportation, investment in solar power and procurement practices. Sustainability and circularity principles are embedded within our product design and development processes. We are committed to minimising our carbon impact and working towards a greener future.

Environmental Management

We measure and assess our efforts through our integrated Environmental Management System. Registered to ISO 14001: 2015, our system incorporates clear objectives which are monitored and measured through a documented programme with regular reviews for continuous improvement.



Chain of Custody

Our Chain of Custody certification (COC) with the Forest Stewardship Council® (FSC®) represents the unbroken path that certificated products take, from the sustainably managed forests of origin, to the consumer.



Sustainability

Created in 2006, the Furniture Industry Sustainability Programme (FISP) has become established as the furniture industry forum on all environmental and sustainability issues. These considerations relate to all aspects of the industry's business, from purchasing and procurement through to end of product life, including social, ethical and employment concerns as well as waste, energy and emissions.

We have achieved full membership of FISP and this enables us to focus on reducing our social and environmental impact. We have been proud members of the Furniture Industry Sustainability Programme (FISP) since 2007. Membership is subject to regular independent re-audits to monitor our continuing commitment.



Energy Management

Our energy management strategy includes a number of practices to minimise usage throughout all areas of the business. In addition, in the last year our solar panels have generated over 160,000 Kwh of electricity. Nearly half of the output is returned to the National Grid – sufficient to power 26 three/four bedroom homes for a year.



LEE & PLUMPTON

Bunns Bank | Attleborough Norfolk | NR17 1QD
T: 01953 453830 | E: sales@leeandplumpton.co.uk

leeandplumpton.co.uk



@LEEANDPLUMPTON

October 2022_v1.1

E&OE October 2022

Images featured within this brochure are for illustrative purposes and appearances may vary from those shown. Due to our ongoing initiatives, Lee & Plumptre Ltd. reserve the right to change, modify or delete products at any time without notification.

