



LEE & PLUMPTON

Inspiration At Work

SOFT SEATING



NOUVEAU



Features & Details

- Colour layering feature available on all configurations.
- Coordinated range for general office, breakout and reception spaces.
- Modular design allows complete flexibility.
- High back sofas and media booths for acoustic management in open plan areas.
- Choose from a range of fabrics – see pages 254-259.
- Solid wood frame construction.
- Polished chrome corner feet.
- 5 year guarantee.

Please contact our Customer Service Team for any alternative fabric choices (including leather).



MOUNT, SMALL SEAT UNIT



W = Width, D = Depth, H = Height, SH = Seat Height

Dimensions:	Fabric Group	Code
W 900mm	1	SEMOSSUA
D 700mm	2	SEMOSSUB
H 850mm	3	SEMOSSUC
SH 460mm	4	SEMOSSUD

MOUNT, LARGE SEAT UNIT



Dimensions:	Fabric Group	Code
W 1580mm	1	SEMOLSUA
D 700mm	2	SEMOLSUB
H 850mm	3	SEMOLSUC
SH 460mm	4	SEMOLSUD

MOUNT, 45° SEAT UNIT



Dimensions:	Fabric Group	Code
W 1085mm	1	SEMO45A
D 700mm	2	SEMO45B
H 850mm	3	SEMO45C
SH 460mm	4	SEMO45D

MOUNT, SMALL STOOL



W = Width, D = Depth, H = Height, SH = Seat Height

Dimensions:	Fabric Group	Code
W 900mm	1	SEMOSSA
D 700mm	2	SEMOSSB
H 460mm	3	SEMOSSC
	4	SEMOSSD

MOUNT, LARGE STOOL



Dimensions:	Fabric Group	Code
W 1580mm	1	SEMOLSA
D 700mm	2	SEMOLSB
H 460mm	3	SEMOLSC
	4	SEMOLSD

MOUNT, SINGLE CHAIR



Dimensions:	Fabric Group	Code
W 900mm	1	SEMOCHA
D 700mm	2	SEMOCHB
H 850mm	3	SEMOCHC
SH 460mm	4	SEMOCHD

MOUNT, TWO SEATER SOFA



Dimensions:	Fabric Group	Code
W 1580mm	1	SEMOSOA
D 700mm	2	SEMOSOB
H 850mm	3	SEMOSOC
SH 460mm	4	SEMOSOD

MOUNT, SINGLE SEAT BOOTH



Dimensions:	Fabric Group	Code
W 1580mm	1	SEMOSOA
D 700mm	2	SEMOSOB
H 850mm	3	SEMOSOC
SH 460mm	4	SEMOSOD

MOUNT, TWO SEATER BOOTH



W = Width, **D** = Depth, **H** = Height, **SH** = Seat Height

Dimensions:	Fabric Group	Code
W 1580mm	1	SEMODBA
D 700mm	2	SEMODBB
H 1630mm	3	SEMODBC
SH 460mm	4	SEMODBD

MEDIA BOOTH



Dimensions:	Fabric Group	Code
W 2300mm	1	SEMOMBA
D 1580mm	2	SEMOMBB
H 1630mm	3	SEMOMBC
SH 460mm	4	SEMOMBD

TV Screen is shown for illustrative purposes only. Power Module and Booth Table can be purchased separately.

OPTIONAL EXTRAS

Electronic devices can be connected, powered and recharged with a power module.

Add a table to your media booth with chrome leg and a choice of wood top finishes.

POWER MODULE



Colour	Code
Black, White, Grey	ACPMOD

Simply add the colour suffix to your code when ordering. **B** Black, **W** White, **G** Grey

BOOTH TABLE



Dimensions:	Code
1100mm x 680mm x 400mm	ACTABS

The Media Booth Table has a chrome leg with a choice of wood top finishes. BE Beech, LO Light Oak, MA Maple, BI Birch, WH White, and WA Walnut. When ordering please add the wood suffix to your code eg ACTABSBI





AMITY

Features & Details

- Acoustic properties for open plan working.
- Ideal for quiet spaces and informal meeting areas.
- Coordinated colour matching feature available on all configurations.
- Solid wood frame construction.
- Polished chrome corner feet.
- Choose from a range of fabrics – see pages 254-259.
- 5 year guarantee.

Please contact our Customer Service Team for any alternative fabric choices (including leather).



AMITY, TALL SINGLE SEAT BOOTH



W = Width, **D** = Depth, **H** = Height, **SH** = Seat Height

Dimensions:	Fabric Group	Code
W 810mm	1	SEAMTB1A
D 760mm	2	SEAMTB1B
H 1490mm	3	SEAMTB1C
SH 440mm	4	SEAMTB1D

AMITY, TALL TWO SEATER BOOTH



Dimensions:	Fabric Group	Code
W 1360mm	1	SEAMTB2A
D 760mm	2	SEAMTB2B
H 1490mm	3	SEAMTB2C
SH 440mm	4	SEAMTB2D

AMITY, LOW TWO SEATER BOOTH



W = Width, **D** = Depth, **H** = Height, **SH** = Seat Height

Dimensions:	Fabric Group	Code
W 1360mm	1	SEAMLBA
D 760mm	2	SEAMLBB
H 1145mm	3	SEAMLBC
SH 440mm	4	SEAMLBD

AMITY, MEDIA BOOTH



Dimensions:	Fabric Group	Code
W 2520mm	1	SEAMMBA
D 1360mm	2	SEAMMBB
H 1490mm	3	SEAMMBC
SH 440mm	4	SEAMMBD

TV Screen is shown for illustrative purposes only. Power Module and Booth Table can be purchased separately.

OPTIONAL EXTRAS

Electronic devices can be connected, powered and recharged with a power module.

Add a table to your media booth with chrome leg and a choice of wood top finishes.

POWER MODULE



Colour	Code
Black, White, Grey	ACPMOD

Simply add the colour suffix to your code when ordering: **B** Black, **W** White, **G** Grey.

BOOTH TABLE



Dimensions:	Code
1100mm x 680mm x 400mm	ACTABS

The Media Booth Table has a chrome leg with a choice of wood top finishes. BE Beech, LO Light Oak, MA Maple, BI Birch, WH White, WA Walnut, NN Natural Nebraska Oak, and GN Grey Nebraska Oak. When ordering please add the wood suffix to your code. eg ACTABSBI

RAPID



Features & Details

- Modular solution for breakout and reception spaces.
- Robust construction for high traffic areas.
- Coordinated colour matching feature available on all configurations.
- Solid wood frame construction.
- Polished chrome corner feet.
- Choose from a range of fabrics – see pages 254-259.
- 5 year guarantee.

Please contact our Customer Service Team for any alternative fabric choices (including leather).



RAPID, SMALL SEAT UNIT

W = Width, D = Depth, H = Height, SH = Seat Height

Dimensions:	Fabric Group	Code
W 600mm	1	SERPSSUA
D 650mm	2	SERPSSUB
H 800mm	3	SERPSSUC
SH 410mm	4	SERPSSUD



RAPID, LARGE SEAT UNIT

Dimensions:	Fabric Group	Code
W 1200mm	1	SERPLSUA
D 650mm	2	SERPLSUB
H 800mm	3	SERPLSUC
SH 410mm	4	SERPLSUD



RAPID, 45° SEAT UNIT

Dimensions:	Fabric Group	Code
W 950mm	1	SERP45A
D 650mm	2	SERP45B
H 800mm	3	SERP45C
SH 410mm	4	SERP45D



W = Width, **D** = Depth, **H** = Height, **SH** = Seat Height

RAPID, SINGLE CHAIR



Dimensions:	Fabric Group	Code
W 700mm	1	SERPCHA
D 650mm	2	SERPCHB
H 800mm	3	SERPCHC
SH 410mm	4	SERPCHD

RAPID, TWO SEATER SOFA



Dimensions:	Fabric Group	Code
W 1300mm	1	SERPSOA
D 650mm	2	SERPSOB
H 800mm	3	SERPSOC
SH 410mm	4	SERPSOD



DUAL

Features & Details

- Creative, adaptable seating for breakout and reception spaces.
- Coordinated colour matching feature available on all configurations.
- Solid wood frame construction.
- Hardwood feet in birch or walnut.
- Choose from a range of fabrics – see pages 254-259.
- 5 year guarantee.

Please contact our Customer Service Team for any alternative fabric choices (including leather).

When ordering please add the wooden feet suffix of **BI** for birch or **WA** for walnut to your code. eg SEDUSCGBI



DUAL, LARGE SEAT UNIT



W = Width, **D** = Depth, **H** = Height, **SH** = Seat Height

Dimensions:	Fabric Group	Code
W 1100mm	1	SEDULSUA
D 650mm	2	SEDULSUB
H 790mm	3	SEDULSUC
SH 460mm	4	SEDULSUD

DUAL, SEMI CIRCLE UNIT



Dimensions:	Fabric Group	Code
W 1300mm	1	SEDUSCA
D 600mm	2	SEDUSCB
H 460mm	3	SEDUSCC
	4	SEDUSCD

Features & Details

- Versatile seating for impromptu meetings.
- Pull up and sit down.
- Coordinates with our other soft seating ranges.
- Double Bite cut out stool can link to multiple circular stools.
- Choose from a range of fabrics – see pages 254-259.
- 5 year guarantee.

Please contact our Customer Service Team for any alternative fabric choices (including leather).



CUBE STOOL



Dimensions:	Fabric Group	Code
Square 450mm	1	SECUBESTOOLA
Height 460mm	2	SECUBESTOOLB
	3	SECUBESTOOLC
	4	SECUBESTOOLD

CIRCULAR STOOL



Dimensions:	Fabric Group	Code
Circular 450mm	1	SECIRCSTOOLA
Height 460mm	2	SECIRCSTOOLB
	3	SECIRCSTOOLC
	4	SECIRCSTOOLD

DOUBLE BITE STOOL



Dimensions:	Fabric Group	Code
Circular 450mm	1	SEBITESTOOLA
Height 460mm	2	SEBITESTOOLB
	3	SEBITESTOOLC
	4	SEBITESTOOLD

HEYDON STOOLS (STACKABLE)

W = Width, D = Depth, H = Height



Large Stool



Small Stool

Stool	Dimensions	Code	Fabric Group 1	Fabric Group 2	Fabric Group 3	Fabric Group 4
Large	W 580 D 570 H 450	CHHEHS				
Small	W 475 D 345 H 370	CHHELS				

AZUR



Features & Details

- Completely square profile, allowing furniture to sit perfectly aligned.
- Coordinated colour matching feature available on all seating configurations.
- Solid wood frame construction.
- Polished chrome 'O' leg.
- A choice of fabric or leather upholstery.
- Choose from a range of fabrics – see pages 254-259.
- 5 year guarantee.

Please contact our Customer Service Team for any alternative fabric choices (including leather).



AZUR, SINGLE ARMCHAIR



W = Width, **D** = Depth, **H** = Height, **SH** = Seat Height

Dimensions:	Fabric Group	Code
W 920mm	1	SEAZCHA
D 830mm	2	SEAZCHB
H 830mm	3	SEAZCHC
SH 450mm	4	SEAZCHD

AZUR, TWO SEATER SOFA



Dimensions:	Fabric Group	Code
W 1750mm	1	SEAZSOA
D 830mm	2	SEAZSOB
H 830mm	3	SEAZSOC
SH 450mm	4	SEAZSOD

AZUR, BASE STOOL SMALL



Dimensions:	Fabric Group	Code
W 415mm	1	SEAZSSA
D 830mm	2	SEAZSSB
H 450mm	3	SEAZSSC
	4	SEAZSSD

AZUR, BASE STOOL LARGE



Dimensions:	Fabric Group	Code
W 830mm	1	SEAZLSA
D 830mm	2	SEAZLSB
H 450mm	3	SEAZLSC
	4	SEAZLSD



CAVIL



Features & Details

- Stitching detail for the back rest.
- Solid wood frame construction.
- Polished chrome corner feet.
- Contrast fabric option available.
- Choose from a range of fabrics – see pages 254-259 .
- 5 year guarantee.

Please contact our Customer Service Team for any alternative fabric choices (including leather).



CAVIL, SINGLE ARMCHAIR



W = Width, D = Depth, H = Height

Dimensions:	Fabric Group	Code
W 725mm	1	SECACHA
D 750mm	2	SECACHB
H 850mm	3	SECACHC
SH 460mm	4	SECACHD

CAVIL, TWO SEATER SOFA



Dimensions:	Fabric Group	Code
W 1250mm	1	SECASOA
D 750mm	2	SECASOB
H 850mm	3	SECASOC
SH 460mm	4	SECASOD

CAVIL, BASE STOOL



Dimensions:	Fabric Group	Code
W 525mm	1	SECASSA
D 525mm	2	SECASSB
H 460mm	3	SECASSC
	4	SECASSD



Choose from a range of fabrics.

For colour fabric groups refer to page 254-259.

SMALL SQUARE SCATTER CUSHION



W = Width, **D** = Depth, **H** = Height

Dimensions:	Fabric Group	Code
W 400mm	1	SQSCUSHA
D 150mm	2	SQSCUSHB
H 400mm	3	SQSCUSHC
	4	SQSCUSHD

LARGE SQUARE SCATTER CUSHION



Dimensions:	Fabric Group	Code
W 500mm	1	SQLCUSHA
D 200mm	2	SQLCUSHB
H 500mm	3	SQLCUSHC
	4	SQLCUSHD

ROUND BOLSTER SCATTER CUSHION



Dimensions:	Fabric Group	Code
W 500mm	1	ROUCUSHA
Round 200mm	2	ROUCUSHB
	3	ROUCUSHC
	4	ROUCUSHD

BOXED SCATTER CUSHION



Dimensions:	Fabric Group	Code
W 540mm	1	BOXCUSHA
D 200mm	2	BOXCUSHB
H 370mm	3	BOXCUSHC
	4	BOXCUSHD

A COMMITMENT TO SERVICE

Dedicated Customer Service

The values of Integrity, Commitment, Development, Accountability and Teamwork underpin the culture and aspirations of the Company. We strive to design and develop an extensive portfolio of quality products which combine aesthetics and practicality to offer Best Value solutions. The ongoing monitoring of every aspect of the business ensures we are able to implement continuous improvements to maintain our determined commitment to customer service.



Inhouse Delivery Fleet

We operate and manage our own delivery fleet and are targeted for accurate, on time order fulfillment. Rapid turnaround is guaranteed by our weekly scheduled deliveries and, on many items, we also offer a 'Quick Ship' service. Standard deliveries are free of charge with next day delivery on stocked items or customer collection (with 24 hours' notice) also available.

- Quick Ship: Products delivered within 5 working days from your order deadline date.
- Group A: Products subject to a longer lead time (typically 3 weeks).



Extensive Stock Holding

Our 200,000 square feet manufacturing base includes an extensive warehousing facility. We hold stock of an estimated 50,000 items including raw materials and finished goods.

This substantial financial investment provides a further demonstration of our determined commitment to the highest levels of customer service.

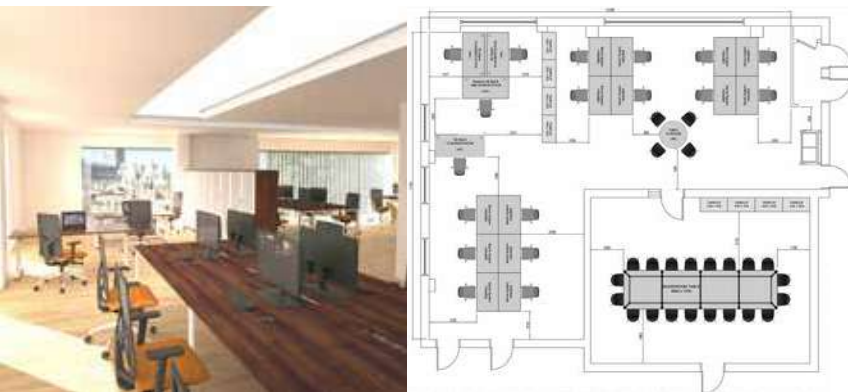


INHOUSE EXPERTISE

Bespoke Design

Unlike many manufacturers, we are able to develop customised solutions to match each client's precise requirements. With its own production unit and dedicated team, our Bespoke department can design and manufacture products from original 'sketches' or develop existing range items to customised specifications.

Your dedicated account manager, together with a member of the Bespoke team, will work with you to develop a solution to match your requirement and budget.



Planning & Design

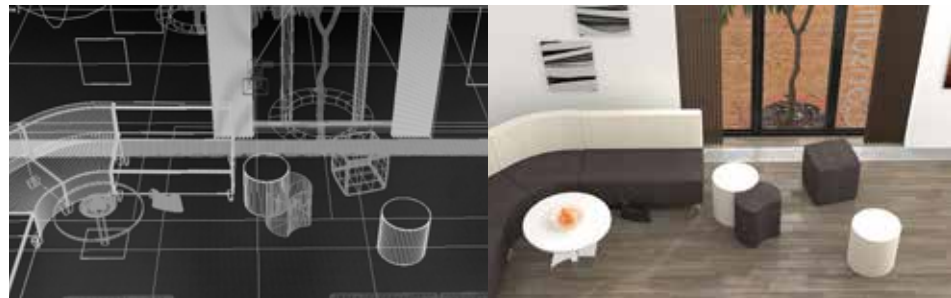
Our highly experienced designers are available to offer expert space planning and design services. Working from simple sketches or architect plans, we can recommend product choice, configurations and finishes to match desired outcomes and available budget.

We are able to advise regarding effective space utilisation and also work collaboratively to consider lighting, team requirements, storage as well as existing building services and future reconfigurations of any environments.

CGI Expertise

We have an extensive library of product images together with a portfolio of 3D CAD files. Customers can download files from our web site or upon request.

The wide choice of CGI, photo-realistic room scenes can help visualise proposed interiors, colours, and designs.



Sales & Customer Support

We know relationships are important. Our nationwide sales team offers 'face to face' meetings to provide expert support, advice and guidance as well as facilitating access to our extensive inhouse services including customised marketing materials, product samples and collaborative events.

Each and every order is carefully monitored and tracked by our customer services team. Fully trained advisors provide a dedicated point of contact to manage queries and requests as well as full after-sales support.



A COMMITMENT TO QUALITY

Continuous investment in facilities and training, coupled with a dedicated workforce and strong supplier relationships, ensures the quality, consistency and reliability our customers expect. The management and measurement of our internal processes and procedures drives our quest for development and improvement and, therefore, ongoing customer satisfaction.

We have an established reputation for the supply of robust, quality products. We design and manufacture to comply with relevant British and international standards – covering dimensions; ergonomics; strength & stability; moving parts; fire regulations; and electrical systems. The inherent strength and durability means that our products will withstand the rigours of daily ‘wear and tear’ thus extending the lifecycle. Our furniture includes a 7-year guarantee (unless specified).

Copies of our credentials and certifications are available at leeandplumpton.co.uk



Quality Management
System BS EN ISO
9001



Environmental Management
System BS EN ISO 14001



Occupational Health And
Safety Management System
OHSAS 45001 (OH&S)



Commercial Interiors
U.K.
(CIUK)



Commercial Furniture
Advisory Service (CFAS)



Members Of Furniture
Industry Research
Association (FIRA)



RESPONSIBLE MANUFACTURING

As a major manufacturer, we recognise our responsibility to consider all areas of our business in terms of environmental impact. From management, administration and product design through to facilities management and logistics together with manufacturing processes and procedures, we strive to introduce positive changes to protect the planet.

Our efforts embrace the full spectrum of business activities including reductions in carbon emissions through to waste prevention, recycling initiatives, transportation, investment in solar power and procurement practices. Sustainability and circularity principles are embedded within our product design and development processes. We are committed to minimising our carbon impact and working towards a greener future.

Environmental Management

We measure and assess our efforts through our integrated Environmental Management System. Registered to ISO 14001: 2015, our system incorporates clear objectives which are monitored and measured through a documented programme with regular reviews for continuous improvement.



Chain of Custody

Our Chain of Custody certification (COC) with the Forest Stewardship Council® (FSC®) represents the unbroken path that certificated products take, from the sustainably managed forests of origin, to the consumer.



Sustainability

Created in 2006, the Furniture Industry Sustainability Programme (FISP) has become established as the furniture industry forum on all environmental and sustainability issues. These considerations relate to all aspects of the industry's business, from purchasing and procurement through to end of product life, including social, ethical and employment concerns as well as waste, energy and emissions.

We have achieved full membership of FISP and this enables us to focus on reducing our social and environmental impact. We have been proud members of the Furniture Industry Sustainability Programme (FISP) since 2007. Membership is subject to regular independent re-audits to monitor our continuing commitment.



Energy Management

Our energy management strategy includes a number of practices to minimise usage throughout all areas of the business. In addition, in the last year our solar panels have generated over 160,000 Kwh of electricity. Nearly half of the output is returned to the National Grid – sufficient to power 26 three/four bedroom homes for a year.



LEE & PLUMPTON

Bunns Bank | Attleborough Norfolk | NR17 1QD
T: 01953 453830 | E: sales@leeandplumpton.co.uk

leeandplumpton.co.uk



@LEEANDPLUMPTON

October 2022_v1.1

E&OE October 2022

Images featured within this brochure are for illustrative purposes and appearances may vary from those shown. Due to our ongoing initiatives, Lee & Plumptre Ltd. reserve the right to change, modify or delete products at any time without notification.

