



LEE & PLUMPTON

Inspiration At Work

FABRIC SWATCHES



FABRIC OPTIONS

Available are a variety of fabric options from a number of reputable manufacturers.



aguafabrics.com



butefabrics.com



camirafabrics.com



chieftainfabrics.com



crestleather.com

Gabriel®

gabriel.dk

kvadrat

kvadrat.dk

LEXAIRE

lexaire.co.uk



macflex.com



panaz.com



spectrumvinyls.co.uk



spradling.eu



sunburydesign.com

VESCOM

vescom.com



yarwoodleather.com

inloom

Inloomfabrics.com



FABRIC GROUPS

QUICK SHIP

We offer a selection of standard fabric colours on Quick Ship Delivery: Black, Blue, Ruby Red, or Grey.



BK Black

BL Blue

RB Ruby

GY Grey

TASK & MEETING CHAIRS

Camira			
Group 1	Group 2	Group 3	Group 4
Advantage	Canopy	Aspect	Aquarius
Citadel	Chateau	Honeycomb	Blazer
Era	Manhattan	Mainline Flax	Halcyon - Aspen
Gravity	Mainline	Nexus	Halcyon - Blossom
Phoenix	Sprint	Patina	Halcyon - Ceder
Rivet	Urban		Hebden & Hemp Plus
	Vita		Hi-Tech
	X2		Intervene
	Xtreme		Landscape Collection
			Oxygen
			Silk
			Synergy
			Track
			24/7 Flax
Chieftain (Vinyl Fabric)			
Group 1	Group 2	Group 3	Group 4
	Pu Trimcell Classic		Just Colour

Leather and other ranges, price on application.

Guarantee

For 8 hours per day use all models have 5 Year Guarantee on all chairs and 2 Year Guarantee on moving parts.

For 24 hour per day use a structural guarantee applies.

Fabric Guarantee as per manufacturer instructions.

For more colour options and choice please visit the relevant fabric manufacturer's web site (included on the previous page).

TASK & MEETING CHAIRS

Gabriel			
Group 1	Group 2	Group 3	Group 4
	Dragon	Atlantic	
	Event	Fighter	
	String	Grace	
		Harlequin	
		Medley	
		Step	
InLoom			
Group 1	Group 2	Group 3	Group 4
Alba			
Bondai			
Erika			
Panaz			
Group 1	Group 2	Group 3	Group 4
		Highland	Alcazar
		Microvelle	Harvard
		Linear	Vespa
		Myriad	Crisp
		Pu Ultimate Touch	Fame
		Pu Cadet Colours	Flex
			Infinity
			Interglobe Wool 2
			Monment
			Nova 2
			Omega
			Runner
			Step Melange

Leather and other ranges, price on application.

Please note: where fabric finishes have been selected from multiple group bands, the higher price band will be charged for the whole unit. If you require fabric to be treated for Fire Retardancy, the fabric will move up to the next price band.

Guarantee

For 8 hours per day use all models have 5 Year Guarantee on all chairs and 2 Year Guarantee on moving parts.

Fabric Guarantee as per manufacturer instructions.

SOFT SEATING

Camira						
Group A	Group B	Group C	Group D	Group E	Group F	Group G
Advantage	Canopy	Aspect	24/7 Flax	Acrobat (Net)	Corrosion	Leather
Citadel	Chateau Plus	Honeycomb	Aquarius	Code	Nettle Collection	
Era	Mainline Plus	Mainline Flax	Blazer	Craggan	Synergy - Chevron	
Gravity	Manhattan	Patina	Halcyon - Aspen	Craggan Flax	Synergy - Hourglass	
Rivet	Sprint		Halcyon - Blossom	Individuo	Synergy - Quilt	
	Urban Plus		Halcyon - Ceder		Vintage	
	Vita		Hebden & Hemp			
	X2		Hi-Tech			
			Intervene			
			Landscape			
			Mainline Flax Stripe			
			Oxygen			
			Silk			
			Synergy			
			Track			
Agua						
Group A	Group B	Group C	Group D	Group E	Group F	Group G
	Juno	Aura	7 Collection			
	Libra	Cashmir	Alberta			
	Linetta	Furnisoft	Mystique			
	Lunar	Fusion	Oregon			
	Paint Pot	Nova	Stretch			
		Ocular				
		Parody				
		Snowdon				
		Stirata				
		Taurus				
		Vistas				
Chieftain (Vinyl Fabric)						
Group A	Group B	Group C	Group D	Group E	Group F	Group G
	Carino					
	Just Colour					
	Just Pattern					

SOFT SEATING

Crest Leather						
Group A	Group B	Group C	Group D	Group E	Group F	Group G
						Leather
Lexaire						
Group A	Group B	Group C	Group D	Group E	Group F	Group G
Classic						Leather
Paintbox						
Plus						
Panaz						
Group A	Group B	Group C	Group D	Group E	Group F	Group G
		Cadet Colours	Altair	Binary Age		
		Haven	Aston	Digital Age		
		Lush	Brookland	Gridz		
		Marna	Calroust	Harvard		
		Myraid	Coco	Isla		
			Darcy	Lara		
			Eve	Oasis		
			Highland	Patternistas		
			Linear	Rhona		
			Mircrovelle	Shapes		
			Montagu	Tessellate		
			Morgan	Vespa		
			Portman			
			Soho			
			Soft Touch			
			Ultimate Touch			
Yarwood						
Group A	Group B	Group C	Group D	Group E	Group F	Group G
						Leather

Please note where fabric finishes have been selected from multiple group bands, the higher price band will be charged for the whole unit.

If you require fabric to be treated for Fire Retardency, the fabric will move up to the next price band.

All of our Soft Seating comes with a **5 Year Guarantee** (fabric guarantee as per manufacturer's instructions). To ensure your fabric choice meets the needs of your commercial interior and for technical specification and fabric guarantees, please visit the manufacturer's website, e.g: www.camirafabrics.com/contract

For any other queries or for assistance in selecting your products contact our friendly Customer Services team on **01953 453830**

Camira

Group 1	Group 2	Group 3	Group 4
Advantage	Chateau +	Oxygen	Craggan
Xtreme	Mainline + & Flax	Intervene +	Hebden +
Manhattan	Urban +	Hemp	
Gravity	Aquarius	Synergy	
X2	Blazer		
Canopy	Sprint		
	Vita		

Kvadrat

Group 1	Group 2	Group 3	Group 4
	Umami	Pause 4	Cava 3
			Remix 2
			Divina 3
			Plot
			Field
			Steelcut Trio 2
			Flora 2
			Clara

Macflex

Group 1	Group 2	Group 3	Group 4
Oporto	Porus	Durius	
	Savanna	Polo	
	Delta/Syntec	Ostrich	
	Sintra		

Gabriel

Group 1	Group 2	Group 3	Group 4
Event	Digital 2	Fame	Step Melange
	Fighter	Atlantic	Charisma
	Europost	Step	Flex
	Gaja Classic		Nova 2
	Argos 2		Europost 2

Sunbury

Group 1	Group 2	Group 3	Group 4
			Laiqu

John Tate

Group 1	Group 2	Group 3	Group 4
	Just Colour	Ambla	

Panaz

Group 1	Group 2	Group 3	Group 4
		Aston	

Agua

Group 1	Group 2	Group 3	Group 4
	Libra	Evoke	Aura Stripe
	Lunra	Juno	Mystique
	Paint Pot	Linetta	7 Collection
	Aries	Nova	
	Aura	Sirata	
	Cashmir	Taurus	
	Classic		

HEYDON

Vescom				
Group 1	Group 2	Group 3	Group 4	
	Furka Plus	Samar	Yuma	
	Leone Plus		Lami	
	Cres		Ariana	
J Singleton				
Group 1	Group 2	Group 3	Group 4	
	Just Colour	Ambla		
Spectrum				
Group 1	Group 2	Group 3	Group 4	
	Colour Pallett		Piccadilly	
	Metallics			
CTP				
Group 1	Group 2	Group 3	Group 4	
	Valencia			
Ultra Leather				
Group 1	Group 2	Group 3	Group 4	
		Ultra Leather		
Bute				
Group 1	Group 2	Group 3	Group 4	
		Kilmory	Clyde	Kames
			Elgin	Lewis
			Pentland	Melrose
			Ramshead	New Selkirk
			Rosslyn	Skye
			Stuart Tartan	Storr
			Argyll	Tay
			Braemar	Troon
			Esk	Turnberry
			Heathered Tweed	Tuitti Fruitti Tweed
			Iona	Tweed

SCREENS

EXECUTIVE / STANDARD SCREENS

Camira	
Group 1	Group 2
Cara, Carlow	Lucia

STANDARD SCREENS

Are available in a choice of 4 standard fabric colours: Black, Blue, Ruby Red or Grey on Quick Ship Delivery.



BK Black



BL Blue



RB Ruby



GY Grey



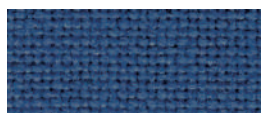
FABRIC SWATCHES

Within these pages, we have selected just a few of the most popular upholstery fabrics to highlight the scope of colour and texture available. Please note that the swatches shown are for illustration purposes only and you should visit the relevant manufacturer's web site for more information. Fabric swatch samples are available direct from the manufacturer or call our Customer Service Centre on **01953 453830**.

Seating Fabrics

Advantage (Group 1) - Camira

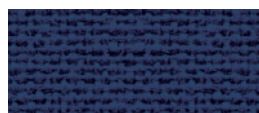
Advantage is a plain weave fabric in a rich assortment of colourways in both plains and mixes. It includes a 10 year guarantee, includes 60% Polypropylene, 30% Wool, 10% Viscose with a heavy duty abrasion resistance.



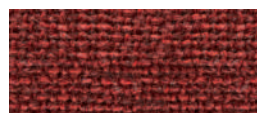
AD001 Adriatic



AD002 Aqua



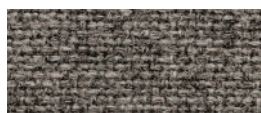
AD004 Cobalt



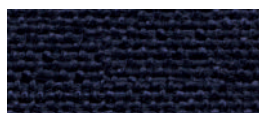
AD005 Cranberry



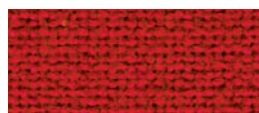
AD001 Granite



AD010 Mineral



AD011 Nightshade



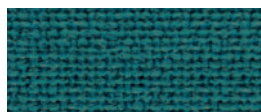
AD014 Red



AD017 Sea Blue



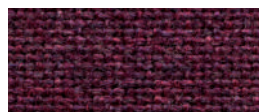
AD020 Wine



AD027 Turquoise



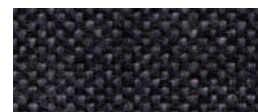
AD028 Charcoal



AD029 Grape



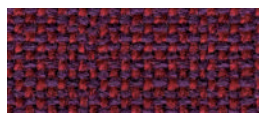
AD055 Black



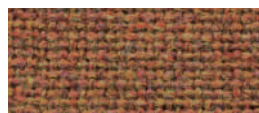
AD066 Graphite



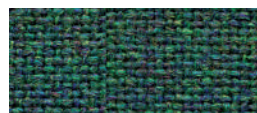
AD072 Pewter



AD093 Damson



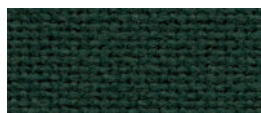
AD098 Tawny



AD101 Persian



AD111 Cinnamon



AD113 Aztec



AD116 Beetroot



AD118 Purple



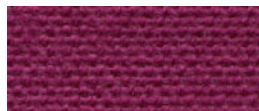
AD122 Kingfisher



AD124 Trident



AD126 Clipper



AD127 Raspberry



AD213 Hobbit

Citadel (Group 1) - Camira

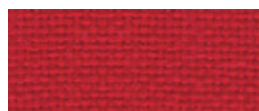
Citadel is a simple plain weave fabric. It is manufactured from 100% Flame Retardant Polypropylene, offers heavy duty abrasion resistance and includes a 10 year guarantee.



FL010 Hamilton



FL019 Craven



FL076 Redstone



FL125 Augusta

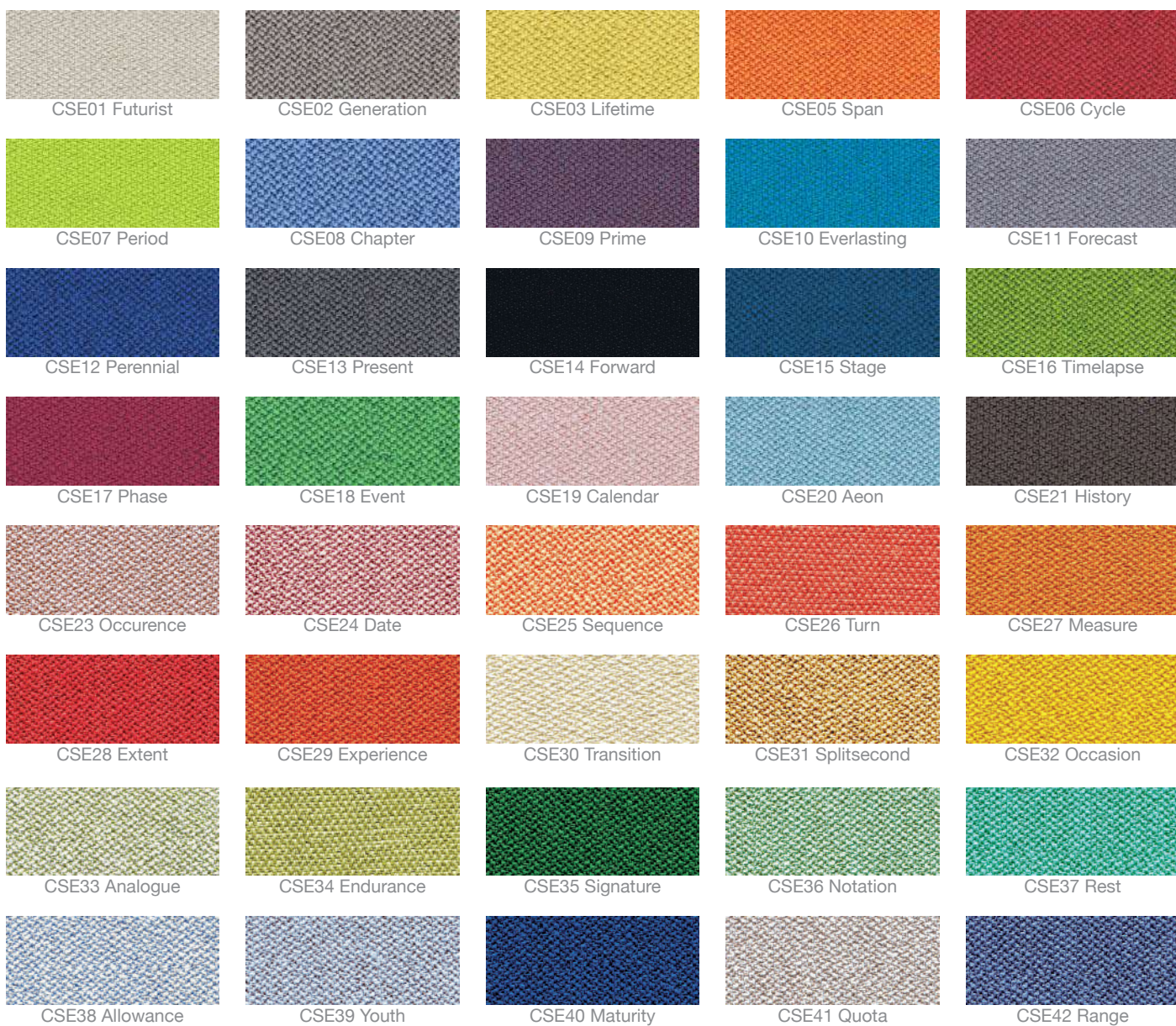


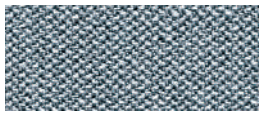
FL757 Stillwater



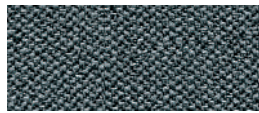
Era (Group 1) - Camira

Era's baby herringbone weave offers an understated contemporary texture. It is 100% polyester with a 10 year guarantee and heavy duty abrasion resistance.

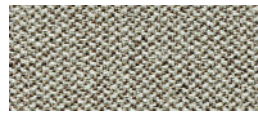




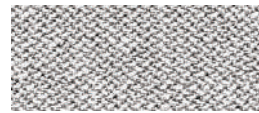
CSE43 Late



CSE44 Elapse



CSE45 Prompt



CSE46 Memo

Phoenix (Group 1) - Camira

Phoenix is a simple crêpe weave fabric. Manufactured from 100% polyester, Phoenix includes a 10 year guarantee and heavy duty abrasion resistance.



YP005 Curacao



YP009 Havana



YP011 Monsterrat



YP019 Paseo



YP026 Costa



YP045 Taboo



YP046 Sombrero



YP051 Guyana



YP076 Lobster



YP081 Blizzard



YP082 Scuba



YP084 Tarot



YP097 Bluebell



YP100 Ocean



YP105 Belize



YP106 Calypso



YP107 Sandstorm



YP108 Apple



YP110 Solano



YP112 Campeche



YP113 Olympic

Main Line Plus (Group 2) - Camira

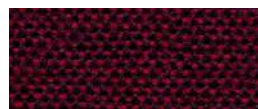
One of the most popular seating fabrics in the Camira collection which has sold over 30 million metres since launch, Main Line Plus is a simple, plain weave fabric. Manufactured from 67% Wool, 20% Flame Retardant Viscose, 13% Viscose, Main Line Plus includes a 10 year guarantee and heavy duty abrasion resistance.



IF000 Charcoal



IF011 Red



IF019 Wine



IF020 Royal



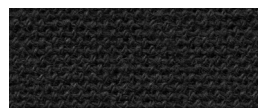
IF027 Wedgewood



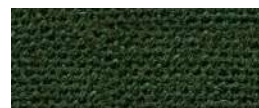
IF033 Claret



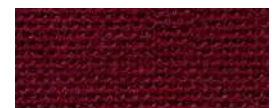
IF058 Lead



IF059 Black



IF084 Juniper



IF101 Ruby



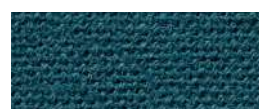
IF111 Clipper



IF112 Cressida



IF116 Crimson



IF141 Aquamarine



IF142 Marmalade



IF147 Penstemon



IF149 Bluenote



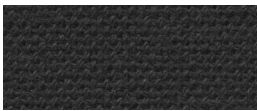
IF231 Mermaid



IF241 Tuscany



IF250 Prudence



IF252 Carbon



IF272 Matador



IF276 Girder

Xtreme (Group 2) - Camira

Xtreme is a modern crepe weave fabric made from 100% post-consumer recycled polyester, diverting waste from landfill and saving virgin raw materials. It includes a 10 year guarantee and heavy duty abrasion resistance.



YS004 Martinique



YS005 Curacao



YS009 Havana



YS024 Cayman



YS026 Costa



YS030 Tobago



YS035 Honeymoon



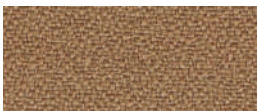
YS045 Taboo



YS046 Sombrero



YS047 Windjammer



YS071 Sandstorm



YS072 Solano



YS073 Parasol



YS074 Campeche



YS076 Lobster



YS077 Appledore



YS079 Panama



YS081 Blizzard



YS082 Scuba



YS084 Tarot



YS091 Nougat



YS094 Slip



YS095 Steel



YS096 Apple



YS097 Bluebell



YS100 Ocean



YS101 Diablo



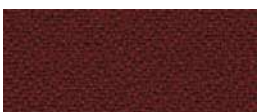
YS102 Bridgetown



YS105 Belize



YS108 Aruba



YS136 Tokara



YS141 Krabi



YS145 Padang



YS156 Madura



YS159 Lombok



YS160 Tonga



YS165 Adobo



YS168 Tortuga



YS171 Osumi



YS172 Bonaire



YS173 Rum

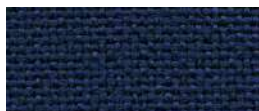
Screen Fabrics

Cara (Group 1) - Camira

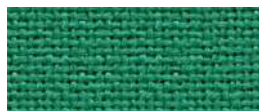
Cara is a plain weave panel 100% polypropylene fabric. It includes a 10 year guarantee.



EJ004 Glass



EJ011 Walten



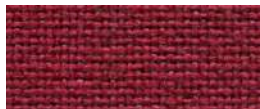
EJ015 Carron



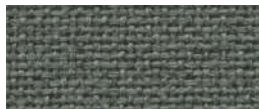
EJ016 Portland



EJ033 Spray



EJ038 Tummel



EJ048 Merrick



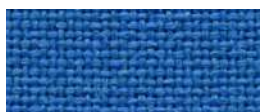
EJ076 Pitlochry



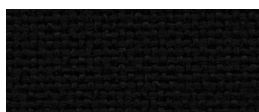
EJ104 Lead



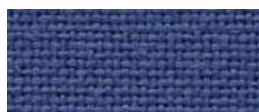
EJ105 Dolphin



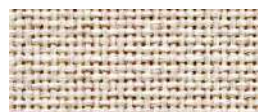
EJ125 Galilee



EJ138 Black



EJ154 Adriatic



EJ169 Clan



EJ172 Chaucer



EJ173 Austen



EJ175 Inverness



EJ180 Cluanie



EJ184 Vit



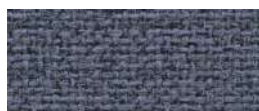
EJ185 Staffa



EJ186 Fair Isle



EJ187 Lora



EJ188 Easdale



EJ189 Ronay



EJ190 Hillswick



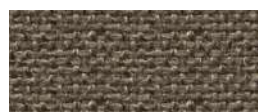
EJ191 Shetland



EJ192 Lomond



EJ193 Beltane



EJ194 Lerwick



EJ195 Maree



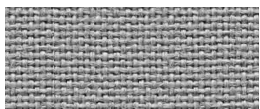
EJ196 Denny



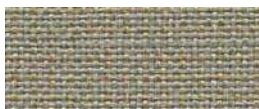
EJ197 Lossie

Carlow (Group 1) - Camira

Carlow is a dobby weave panel fabric and is 100% polypropylene. It includes a 10 year guarantee.



CLW01 Tallow



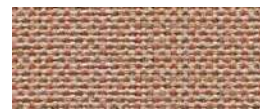
CLW02 Ballina



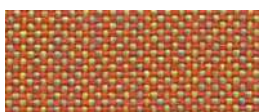
CLW03 Roundwood



CLW04 Quin



CLW05 Callan



CLW06 Navan



CLW07 Dublin



08 Redcross



CLW09 Convoy



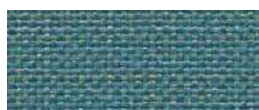
CLW10 Ardee



CLW11 Wicklow



CLW12 Malin



CLW13 Sligo



CLW14 Bree



CLW15 Cavan



Lucia (Group 2) - Camira

Lucia is crêpe weave synthetic panel fabric manufactured from 100% Post Consumer Recycled Polyester. It includes a 10 year guarantee.





LEE & PLUMPTON

Lee & Plumptre is a family owned and operated manufacturer of stylish, contemporary furniture. Established in 1974, the Company is a champion for British design and manufacturing with a commitment to quality, service and sustainability.

Based at its 200,000 square foot manufacturing facility in Norfolk, the Company's infrastructure includes wood, metalwork and upholstery facilities together with extensive warehousing and inhouse logistics.



A COMMITMENT TO SERVICE

Dedicated Customer Service

The values of Integrity, Commitment, Development, Accountability and Teamwork underpin the culture and aspirations of the Company. We strive to design and develop an extensive portfolio of quality products which combine aesthetics and practicality to offer Best Value solutions. The ongoing monitoring of every aspect of the business ensures we are able to implement continuous improvements to maintain our determined commitment to customer service.



Inhouse Delivery Fleet

We operate and manage our own delivery fleet and are targeted for accurate, on time order fulfillment. Rapid turnaround is guaranteed by our weekly scheduled deliveries and, on many items, we also offer a 'Quick Ship' service. Standard deliveries are free of charge with next day delivery on stocked items or customer collection (with 24 hours' notice) also available.

Quick Ship: Products delivered within 5 working days from your order deadline date.

Group A: Products subject to a longer lead time (typically three weeks).



Extensive Stock Holding

Our 200,000 square feet manufacturing base includes an extensive warehousing facility. We hold stock of an estimated 50,000 items including raw materials and finished goods.

This substantial financial investment provides a further demonstration of our determined commitment to the highest levels of customer service.

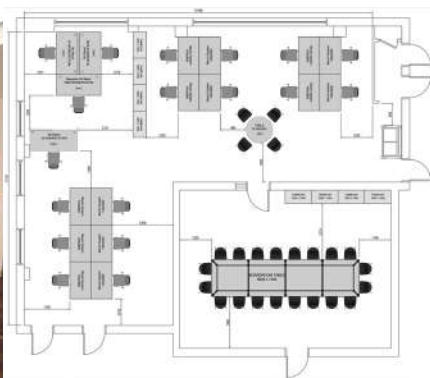


INHOUSE EXPERTISE

Bespoke Design

Unlike many manufacturers, we are able to develop customised solutions to match each client's precise requirements. With its own production unit and dedicated team, our Bespoke department can design and manufacture products from original 'sketches' or develop existing range items to customised specifications.

Your dedicated account manager, together with a member of the Bespoke team, will work with you to develop a solution to match your requirement and budget.



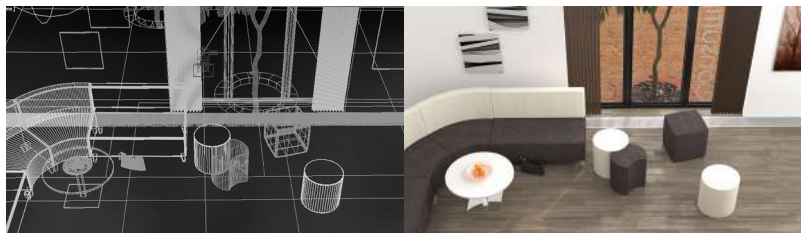
Planning & Design

Our highly experienced designers are available to offer expert space planning and design services. Working from simple sketches or architect plans, we can recommend product choice, configurations and finishes to match desired outcomes and available budget.

We will advise regarding effective space utilisation and work collaboratively to consider lighting, team requirements, storage as well as existing building services and future reconfigurations.

CGI Expertise

We have an extensive library of product images together with a portfolio of 3D CAD files. Customers can download files from our web site or upon request. In addition, our expert, inhouse CGI team is highly skilled in creating photo-realistic images to help visualise proposed interiors, colours and designs.



Sales & Customer Support

We know relationships are important. Our nationwide sales team offers 'face to face' meetings to provide expert support, advice and guidance as well as facilitating access to our extensive inhouse services including customised marketing materials, product samples and collaborative events.

Every order is carefully monitored and tracked by our customer services team. Fully trained advisors provide a dedicated point of contact to manage queries and requests as well as full after-sales support.

A COMMITMENT TO QUALITY

Continuous investment in facilities and training, coupled with a dedicated workforce and strong supplier relationships, ensures the quality, consistency and reliability our customers expect. The management and measurement of our internal processes and procedures drives our quest for development and improvement and, therefore, ongoing customer satisfaction.

Copies of our credentials and certifications are available at www.leeandplumpton.co.uk



FM66808

Quality Management
System BS EN ISO
9001: 2015



EMS515183

Environmental Management
System BS EN ISO 14001:
2015



OHS90285

Occupational Health And
Safety Management System
OHSAS 18001:2007 (OH&S)



British Contract
Furnishing Association
(BCFA)



Commercial Furniture
Advisory Service
(CFAS)



Members Of Furniture
Industry Research
Association (FIRA)



RESPONSIBLE MANUFACTURING

As a major manufacturer, we recognise our responsibility to consider all of our business activities – from management, administration and product design through to our manufacturing processes and procedures - in terms of environmental impact.

Our efforts embrace the full spectrum of business activities including reductions in carbon emissions through to recycling initiatives, transportation, investment in solar power and procurement practices. Monitored through regular scrutiny, we have a commitment to work towards a more sustainable and greener future.

Environmental Management

We measure and assess our efforts through our integrated Environmental Management System. Registered to ISO 14001: 2015, our system incorporates clear objectives which are monitored and measured through a documented programme with regular reviews for continuous improvement.



EMS515183



Sustainability

Created in 2006, the Furniture Industry Sustainability Programme (FISP) has become established as the furniture industry forum on all environmental and sustainability issues. These considerations relate to all aspects of the industry's business, from purchasing and procurement through to end of product life, including social, ethical and employment concerns as well as waste, energy and emissions.

We are full members of FISP and this enables us to focus on reducing our social and environmental impact.

Chain of Custody

Our Chain of Custody certification (COC) with the Forest Stewardship Council (FSC) represents the unbroken path that certificated products take, from the sustainably managed forests of origin, to the consumer.



The mark of
responsible forestry

Zero to Landfill

As a conscientious and socially responsible manufacturer, we're extremely proud to say that we send zero waste to landfill.





LEE & PLUMPTON

Bunns Bank | Attleborough Norfolk | NR17 1QD
T: 01953 453830 | E: sales@leeandplumpton.co.uk

leeandplumpton.co.uk



@LEEANDPLUMPTON

November 2020

E&OE November 2020

Images featured within this brochure are for illustrative purposes and appearances may vary from those shown. Due to our ongoing initiatives, Lee & Plumptre Ltd. reserve the right to change, modify or delete products at any time without notification.

