



LEE & PLUMPTON

*Inspiration At Work*

# FABRIC SWATCHES



# FABRIC OPTIONS

Available are a variety of fabric options from a number of reputable manufacturers.



[aguafabrics.com](http://aguafabrics.com)



[butefabrics.com](http://butefabrics.com)



[camirafabrics.com](http://camirafabrics.com)



[chieftainfabrics.com](http://chieftainfabrics.com)



[crestleather.com](http://crestleather.com)

**Gabriel®**

[gabriel.dk](http://gabriel.dk)

**kvadrat**

[kvadrat.dk](http://kvadrat.dk)

**LEXAIRE**

[lexaire.co.uk](http://lexaire.co.uk)



[macflex.com](http://macflex.com)



[panaz.com](http://panaz.com)



[spectrumvinyls.co.uk](http://spectrumvinyls.co.uk)



[spradling.eu](http://spradling.eu)



[sunburydesign.com](http://sunburydesign.com)

**VESCOM**

[vescom.com](http://vescom.com)



[yarwoodleather.com](http://yarwoodleather.com)

**inloom**

[Inloomfabrics.com](http://Inloomfabrics.com)





# FABRIC GROUPS

## QUICK SHIP

We offer a selection of standard fabric colours on Quick Ship Delivery: Black, Blue, Ruby Red, or Grey.



BK Black

BL Blue

RB Ruby

GY Grey

## TASK & MEETING CHAIRS

Camira			
Group 1	Group 2	Group 3	Group 4
Advantage	Manhattan	Aspect	Flax 24/7
Citadel	Sprint	Main Line Flax	Acrobat
Era	Urban	Main Line Plus	Aquarius
Gravity	Vita	Patina	Blazer
Phoenix	X2		Deca
Rivet	Xtreme		Halcyon Collection
Target			Hi Tech
			Kyoto
			Landscape Collection
			Oceanic
			Silk
			Sumi
			Synergy
			Track
Chieftain			
Group 1	Group 2	Group 3	Group 4
		Just Colour	Lionella

Leather and other ranges, price on application.

### Guarantee

For 8 hours per day use all models have 5 Year Guarantee on all chairs and 2 Year Guarantee on moving parts.

For 24 hour per day use a structural guarantee applies.

**Fabric Guarantee as per manufacturer instructions.**

For more colour options and choice please visit the relevant fabric manufacturer's web site (included on the previous page).

## TASK & MEETING CHAIRS

Gabriel			
Group 1	Group 2	Group 3	Group 4
		Runner	
InLoom			
Group 1	Group 2	Group 3	Group 4
Alba	One	Jeans	Corte
Bondai		Jet	Milano
Erika		Riva	Sparzio
		Roccia	

Leather and other ranges, price on application.

### Guarantee

For 8 hours per day use all models have 5 Year Guarantee on all chairs and 2 Year Guarantee on moving parts.

For 24 hour per day use a structural guarantee applies.

**Fabric Guarantee as per manufacturer instructions.**

For more colour options visit [www.camirafabrics.com/contract](http://www.camirafabrics.com/contract)

## SOFT SEATING

The following fabrics for Soft Seating are in addition to the options listed above.

Alternative choices from the listed manufacturers are available upon application.

Please contact our Customer Service Team regarding Fabric Group 5 and above (including leather options).

Please visit the relevant fabric manufacturer's web site for details regarding fabric guarantee.

Panaz			
Group 1	Group 2	Group 3	Group 4
	Alba	Altair	Allure
	Cadet Colours	Aston	Crackle Gaze
	Lush Velvet	CoCo	
	Marna	Darcy	
	Myriad	David Fox	
		Eve	
		Fusion	
		Patternistas	
		Underground	
Spradling			
Group 1	Group 2	Group 3	Group 4
	Colina	Avant Garde	Dolce C5 PU
	Mardi Gras	Chronos	
	Marlin	Diamonte	
	Sierra	Hitch C5	
	Valencia C5	Silvertex C5	
	Zander	Skyline	
		Vogue	

## SCREENS

### EXECUTIVE / STANDARD SCREENS

#### Camira

##### Group 1

Cara, Carlow

##### Group 2

Lucia

### STANDARD SCREENS

Are available in a choice of 4 standard fabric colours: Black, Blue, Ruby Red or Grey on Quick Ship Delivery.



BK Black



BL Blue



RB Ruby



GY Grey



Please note where fabric finishes have been selected from multiple group bands, the higher price band will be charged for the whole unit.

If you require fabric to be treated for Fire Retardency, the fabric will move up to the next price band.

All of our Soft Seating comes with a **5 Year Guarantee** (fabric guarantee as per manufacturer's instructions). To ensure your fabric choice meets the needs of your commercial interior and for technical specification and fabric guarantees, please visit the manufacturer's website, e.g: [www.camirafabrics.com/contract](http://www.camirafabrics.com/contract)

For any other queries or for assistance in selecting your products contact our friendly Customer Services team on **01953 453830**.

# FABRIC SWATCHES

Within these pages, we have selected just a few of the most popular upholstery fabrics to highlight the scope of colour and texture available. Please note that the swatches shown are for illustration purposes only and you should visit the relevant manufacturer's web site for more information. Fabric swatch samples are available direct from the manufacturer or call our Customer Service Centre on **01953 453830**.

## Seating Fabrics

### Advantage (Group 1) - Camira

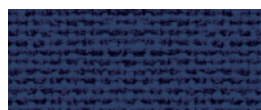
Advantage is a plain weave fabric in a rich assortment of colourways in both plains and mixes. It includes a 10 year guarantee, includes 60% Polypropylene, 30% Wool, 10% Viscose with a heavy duty abrasion resistance.



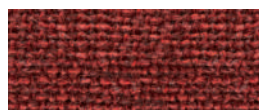
AD001 Adriatic



AD002 Aqua



AD004 Cobalt



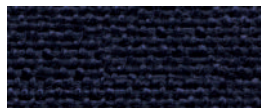
AD005 Cranberry



AD001 Granite



AD010 Mineral



AD011 Nightshade



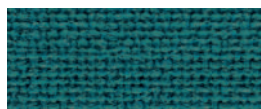
AD014 Red



AD017 Sea Blue



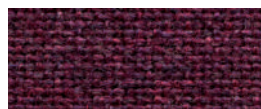
AD020 Wine



AD027 Turquoise



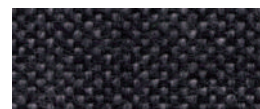
AD028 Charcoal



AD029 Grape



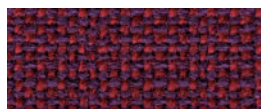
AD055 Black



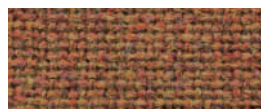
AD066 Graphite



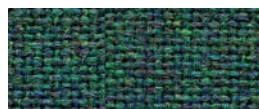
AD072 Pewter



AD093 Damson



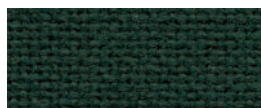
AD098 Tawny



AD101 Persian



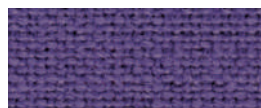
AD111 Cinnamon



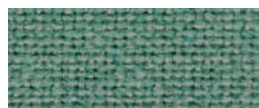
AD113 Aztec



AD116 Beetroot



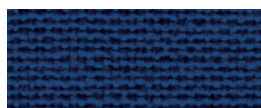
AD118 Purple



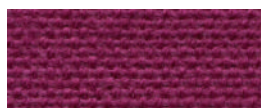
AD122 Kingfisher



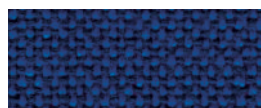
AD124 Trident



AD126 Clipper



AD127 Raspberry



AD213 Hobbit

Certified to Indoor Advantage™ Gold.

EN 1021 - 1&2 (cigarette & match) / BS 7176 Low Hazard.

Certified to ≥60,000 Martindale cycles.



## Citadel (Group 1) - Camira

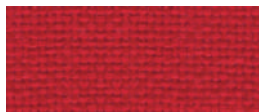
Citadel is a simple plain weave fabric. It is manufactured from 100% Flame Retardant Polypropylene, offers heavy duty abrasion resistance and includes a 10 year guarantee.



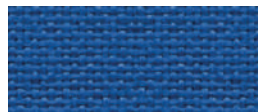
FL010 Hamilton



FL019 Craven



FL076 Redstone



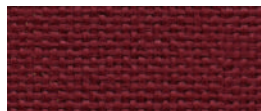
FL125 Augusta



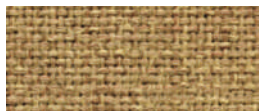
FL757 Stillwater



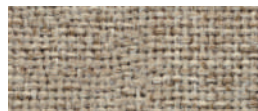
FL768 Ralstone



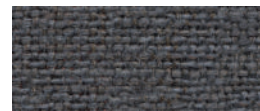
FL801 Bingham



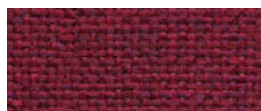
FL821 Fortress



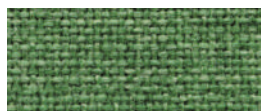
FL822 Beacon



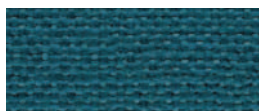
FL824 Hideaway



FL826 Hold



FL828 Drawbridge



FL829 Abide



FL830 Resistance



FL832 Redoubt



FL833 Confine

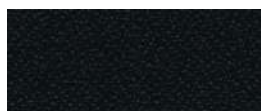
EN 1021 - 1&2 (cigarette & match) / BS 7176 Low Hazard.  
Certified to  $\geq 30,000$  Martindale cycles.

## Phoenix (Group 1) - Camira

Phoenix is a simple crêpe weave fabric. Manufactured from 100% polyester, Phoenix includes a 10 year guarantee and heavy duty abrasion resistance.



YP005 Curacao



YP009 Havana



YP011 Monsterrat



YP019 Paseo



YP026 Costa



YP045 Taboo



YP046 Sombrero



YP051 Guyana



YP076 Lobster



YP081 Blizzard



YP082 Scuba



YP084 Tarot



YP097 Bluebell



YP100 Ocean



YP105 Belize



YP106 Calypso



YP107 Sandstorm



YP108 Apple



YP110 Solano



YP112 Campeche



YP113 Olympic

Certified to OEKO-TEX® Standard 100 / Indoor Advantage™ Gold.  
EN 1021 - 1&2 (cigarette & match) / BS 7176 Low Hazard.  
Certified to  $\geq 100,000$  Martindale cycles.



# Era (Group 1) - Camira

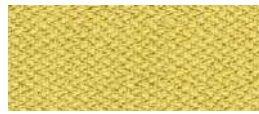
Era's baby herringbone weave offers an understated contemporary texture. It is 100% polyester with a 10 year guarantee and heavy duty abrasion resistance.



CSE01 Futurist



CSE02 Generation



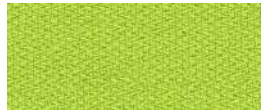
CSE03 Lifetime



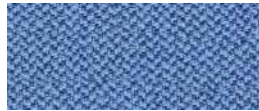
CSE05 Span



CSE06 Cycle



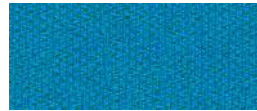
CSE07 Period



CSE08 Chapter



CSE09 Prime



CSE10 Everlasting



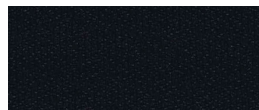
CSE11 Forecast



CSE12 Perennial



CSE13 Present



CSE14 Forward



CSE15 Stage



CSE16 Timelapse



CSE17 Phase



CSE18 Event



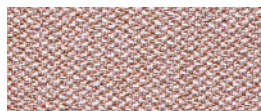
CSE19 Calendar



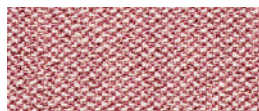
CSE20 Aeon



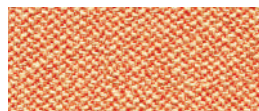
CSE21 History



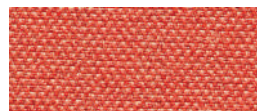
CSE23 Occurence



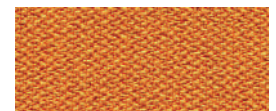
CSE24 Date



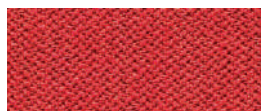
CSE25 Sequence



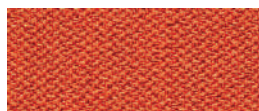
CSE26 Turn



CSE27 Measure



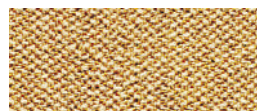
CSE28 Extent



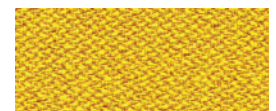
CSE29 Experience



CSE30 Transition



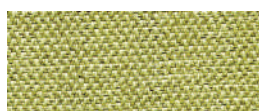
CSE31 Splitsecond



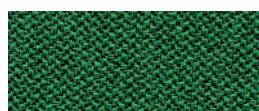
CSE32 Occasion



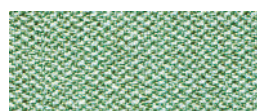
CSE33 Analogue



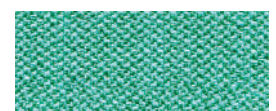
CSE34 Endurance



CSE35 Signature



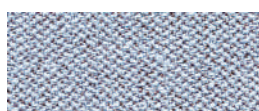
CSE36 Notation



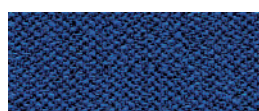
CSE37 Rest



CSE38 Allowance



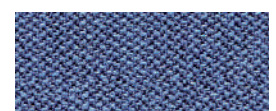
CSE39 Youth



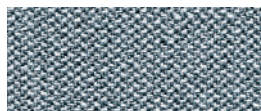
CSE40 Maturity



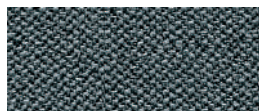
CSE41 Quota



CSE42 Range



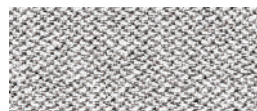
CSE43 Late



CSE44 Elapse



CSE45 Prompt



CSE46 Memo

Certified to OEKO-TEX® Standard 100 / Indoor Advantage™ Gold.  
EN 1021 - 1&2 (cigarette & match) / BS 7176 Low Hazard.  
Certified to ≥100,000 Martindale cycles.



# Xtreme (Group 2) - Camira

Xtreme is a modern crepe weave fabric made from 100% post-consumer recycled polyester, diverting waste from landfill and saving virgin raw materials. It includes a 10 year guarantee and heavy duty abrasion resistance.



YS004 Martinique



YS005 Curacao



YS009 Havana



YS024 Cayman



YS026 Costa



YS030 Tobago



YS035 Honeymoon



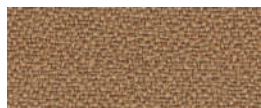
YS045 Taboo



YS046 Sombrero



YS047 Windjammer



YS071 Sandstorm



YS072 Solano



YS073 Parasol



YS074 Campeche



YS076 Lobster



YS077 Appledore



YS079 Panama



YS081 Blizzard



YS082 Scuba



YS084 Tarot



YS091 Nougat



YS094 Slip



YS095 Steel



YS096 Apple



YS097 Bluebell



YS100 Ocean



YS101 Diablo



YS102 Bridgetown



YS105 Belize



YS108 Aruba



YS136 Tokara



YS141 Krabi



YS145 Padang



YS156 Madura



YS159 Lombok



YS160 Tonga



YS165 Adobo



YS168 Tortuga



YS171 Osumi



YS172 Bonaire



YS173 Rum

Certified to the EU Ecolabel / OEKO-TEX® Standard 100 / Indoor Advantage™ Gold.

Made from 100% recycled polyester.

EN 1021 - 1&2 (cigarette & match) / BS 7176 Low Hazard.

Certified to ≥100,000 Martindale cycles.



## Main Line Plus (Group 3) - Camira

One of the most popular seating fabrics in the Camira collection which has sold over 30 million metres since launch, Main Line Plus is a simple, plain weave fabric. Manufactured from 67% Wool, 20% Flame Retardant Viscose, 13% Viscose, Main Line Plus includes a 10 year guarantee and heavy duty abrasion resistance.



IF000 Charcoal



IF011 Red



IF019 Wine



IF020 Royal



IF027 Wedgewood



IF033 Claret



IF058 Lead



IF059 Black



IF084 Juniper



IF101 Ruby



IF111 Clipper



IF112 Cressida



IF116 Crimson



IF141 Aquamarine



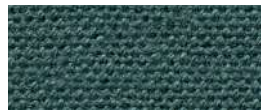
IF142 Marmalade



IF147 Penstemon



IF149 Bluenote



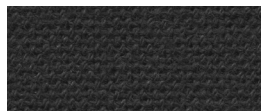
IF231 Mermaid



IF241 Tuscany



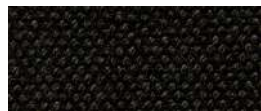
IF250 Prudence



IF252 Carbon



IF272 Matador



IF276 Girder

EN 1021 - 1&2 (cigarette & match) / BS 7176 Low Hazard.  
Certified to  $\geq 50,000$  Martindale cycles





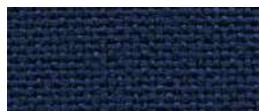
# Screen Fabrics

## Cara (Group 1) - Camira

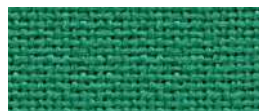
Cara is a plain weave panel 100% polypropylene fabric. It includes a 10 year guarantee.



EJ004 Glass



EJ011 Walten



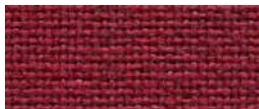
EJ015 Carron



EJ016 Portland



EJ033 Spray



EJ038 Tummel



EJ048 Merrick



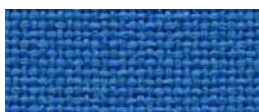
EJ076 Pitlochry



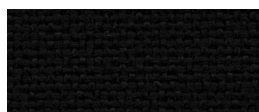
EJ104 Lead



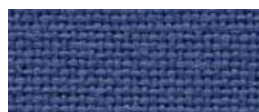
EJ105 Dolphin



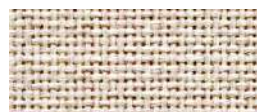
EJ125 Galilee



EJ138 Black



EJ154 Adriatic



EJ169 Clan



EJ172 Chaucer



EJ173 Austen



EJ175 Inverness



EJ180 Cluanie



EJ184 Vit



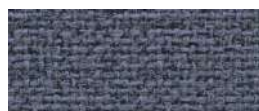
EJ185 Staffa



EJ186 Fair Isle



EJ187 Lora



EJ188 Easdale



EJ189 Ronay



EJ190 Hillswick



EJ191 Shetland



EJ192 Lomond



EJ193 Beltane



EJ194 Lerwick



EJ195 Maree



EJ196 Denny



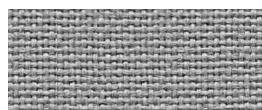
EJ197 Lossie

Certified to the EU Ecolabel.  
Certified to Indoor Advantage™ Gold.  
EN 1021-1 (cigarette).

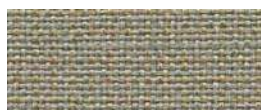


# Carlow (Group 1) - Camira

Carlow is a dobby weave panel fabric and is 100% polypropylene. It includes a 10 year guarantee.



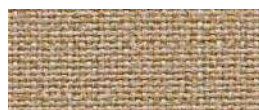
CLW01 Tallow



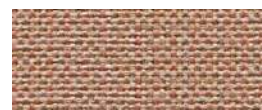
CLW02 Ballina



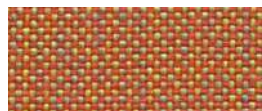
CLW03 Roundwood



CLW04 Quin



CLW05 Callan



CLW06 Navan



CLW07 Dublin



08 Redcross



CLW09 Convoy



CLW10 Ardee



CLW11 Wicklow



CLW12 Malin



CLW13 Sligo



CLW14 Bree



CLW15 Cavan



CLW16 Mayo



CLW17 Balloo



CLW18 Carrick



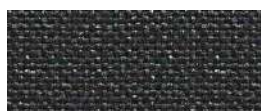
CLW19 Ardmore



CLW20 Ennis



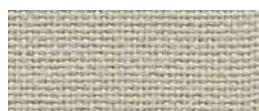
CLW21 Emly



CLW22 Avoca



CLW23 Parteen



CLW24 Glenamoy



CLW25 Clifden

Certified to the EU Ecolabel.  
Certified to Indoor Advantage™ Gold.  
EN 1021-1 (cigarette).



# Lucia (Group 2) - Camira

Lucia is crêpe weave synthetic panel fabric manufactured from 100% Post Consumer Recycled Polyester. It includes a 10 year guarantee.



YB004 Martinique



YB009 Havana



YB011 Monsterrat



YB019 Paseo



YB026 Costa



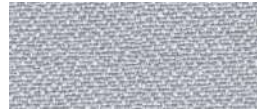
YB038 Tequila



YB046 Sombrero



YB047 Windjammer



YB086 Rum



YB087 Lobster



YB088 Solano



YB089 Scuba



YB090 Tarot



YB093 Aruba



YB094 Slip



YB095 Steel



YB096 Apple



YB097 Bluebell



YB100 Ocean



YB102 Bridgetown



YB105 Belize



YB106 Calypso



YB107 Oyster



YB108 Blizzard



YB156 Madura



YB157 Marianna



YB165 Adobo



YB168 Tortuga



YB170 Buru



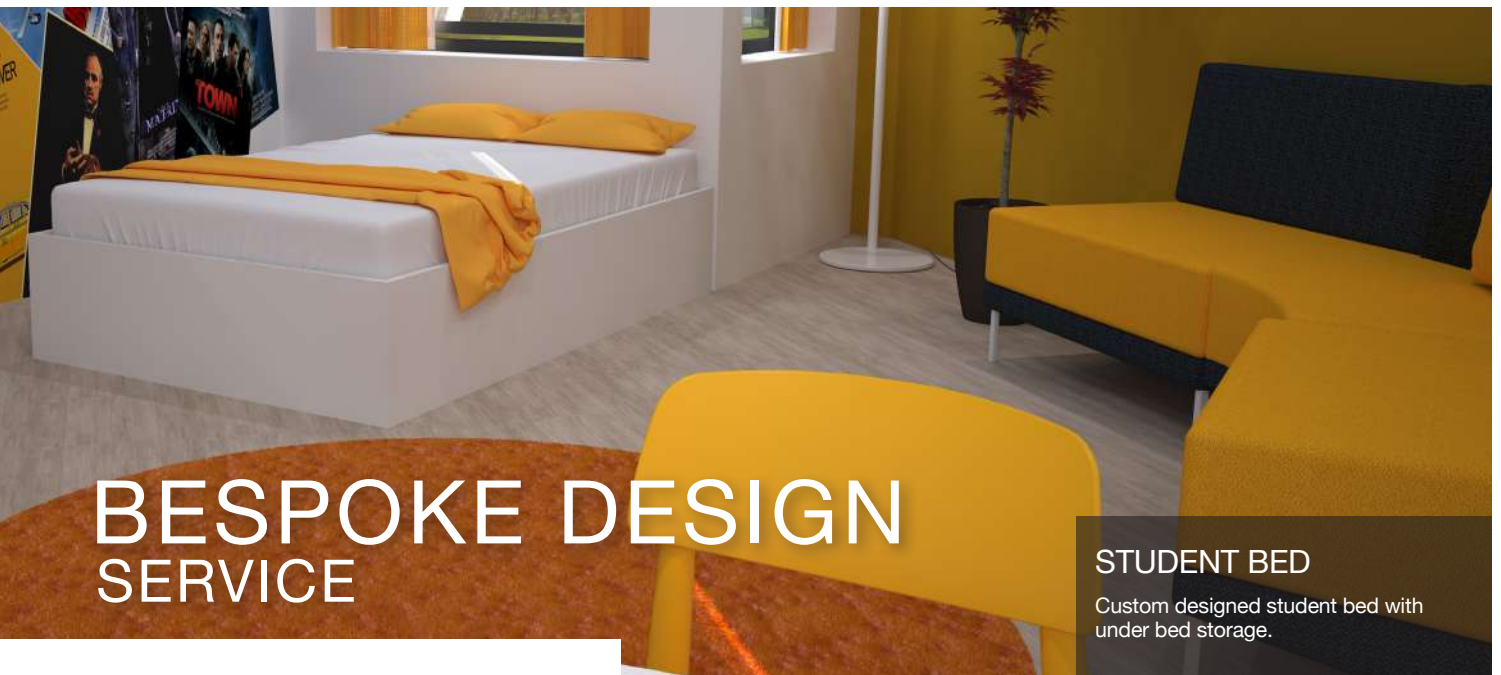
YB301 Campeche



YB302 Sandstorm

Certified to the EU Ecolabel.





# BESPOKE DESIGN SERVICE

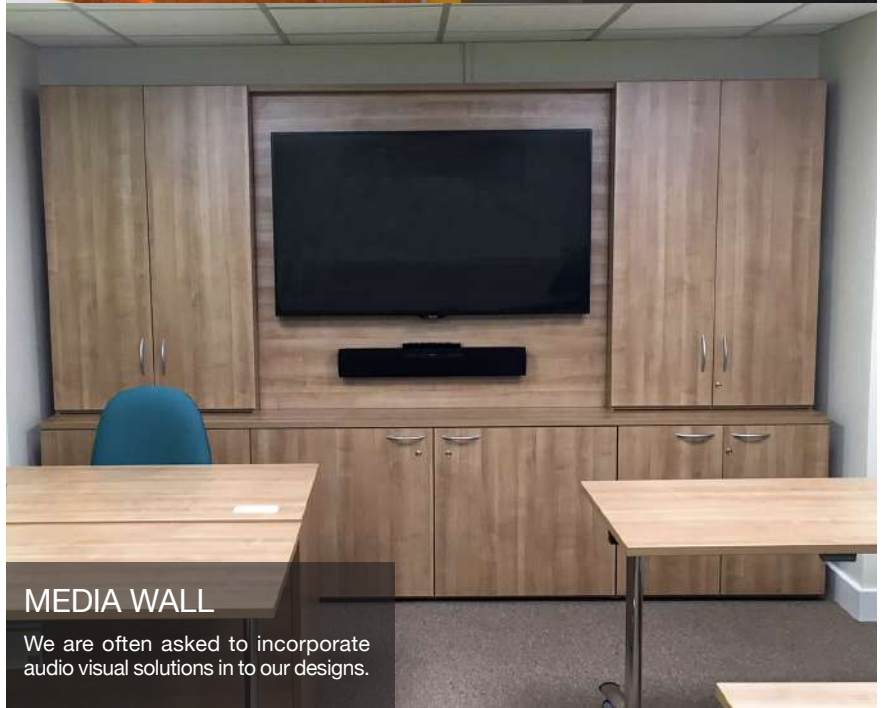
## STUDENT BED

Custom designed student bed with under bed storage.

## MADE TO MEASURE

Our specialist bespoke design team is available to develop customised solutions to match client's precise requirements.

With its own production unit and dedicated team, our Bespoke department can design and manufacture products from original 'sketches' or develop existing range items to match particular specifications.



## MEDIA WALL

We are often asked to incorporate audio visual solutions in to our designs.



## MOBILE CLASSROOM CUPBOARD

This compact, mobile storage unit was made to specific dimensions. It is ideal for training and classrooms and has already proven to be popular for schools.



# RESPONSIBLE MANUFACTURING

## Sustainability

As members of the Furniture Industry Sustainability Programme (FISP), Lee & Plumptre is committed to continuous improvement and supporting environmental responsibility. We work with leading fabric suppliers and many have developed a comprehensive choice of more environmentally conscious solutions.



## Camira Fabrics

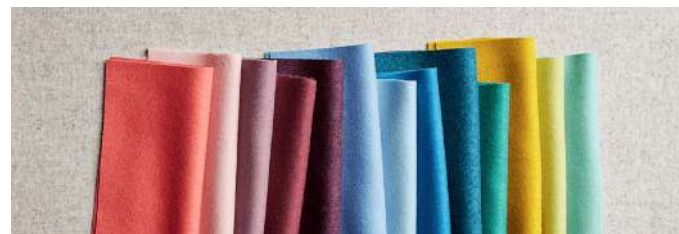
UK manufacturer, Camira has introduced a complete category of fabrics using natural and renewable materials. The natural 'bast' ranges include fibres from the stems of harvested plants as well as pure new wool. Products such as flax, hemp, nettle, silk and wool are included in the portfolio.

Camira launched its first recycled polyester fabric back in 1997. More recently, the Company has introduced the Oceanic collection – its first textile to include marine plastic waste.



## Camira: StaySafe

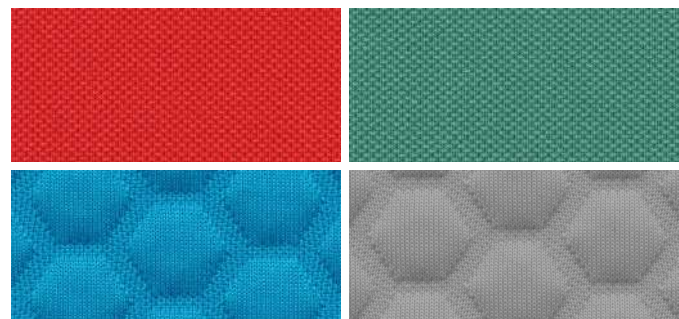
Customers wishing to offer additional protection to staff and customers can consider Camira's Staysafe solution. It is an advanced textile treatment, which reduces the potential for viral transmission from fabric surfaces. When applied to a fabric, this technology destroys viruses and kills bacteria – ensuring upholstery does not act as a potential source of transmission.



## InLoom

British manufacturer, InLoom offers a choice of fabrics manufactured from plastic waste. The One range is made from 100% recycled polyester. It is a stretch knit fabric produced with yarns from plastic bottles for both seating and screens in the office environment.

Spazio is a 3D knitted fabric also produced from 100% recycled polyester. With a three-dimensional hexagonal structure and a soft feel, Spazio is also suitable for soft seating.



# A COMMITMENT TO QUALITY

Continuous investment in facilities and training, coupled with a dedicated workforce and strong supplier relationships, ensures the quality, consistency and reliability our customers expect. The management and measurement of our internal processes and procedures drives our quest for development and improvement and, therefore, ongoing customer satisfaction.

Copies of our credentials and certifications are available at [www.leeandplumpton.co.uk](http://www.leeandplumpton.co.uk)



Quality Management  
System BS EN ISO  
9001



Environmental Management  
System BS EN ISO 14001



Occupational Health And  
Safety Management System  
OHSAS 45001 (OH&S)



Commercial Interiors  
U.K.  
(CIUK)



Commercial Furniture  
Advisory Service (CFAS)



Members Of Furniture  
Industry Research  
Association (FIRA)





# Zero to landfill

As a conscientious and socially responsible manufacturer, we're extremely proud to say that we send zero waste to landfill



Our production processes maximise material usage to minimise waste



Materials are selected to ensure any waste has maximum recycling potential. Any waste is collected for reuse or recycling



In the last year, we recycled 194 tonnes of sawdust – the equivalent weight of 32 African elephants



We also recycled 8 tonnes of cardboard – that's the equivalent weight of over 6 adult rhinos



Waste is sent to a state-of-the-art facility capable of generating renewable energy



Mechanical sorting techniques combined with manual quality checks enable over 95% of material to be reprocessed into new products

As part of our ISO EN BS 14001 certificated environmental management system we continually strive to minimise waste





LEE & PLUMPTON

Bunns Bank | Attleborough Norfolk | NR17 1QD  
T: 01953 453830 | E: sales@leeandplumpton.co.uk

leeandplumpton.co.uk



@LEEANDPLUMPTON

January 2023\_v1.3

E&OE April 2022

Images featured within this brochure are for illustrative purposes and appearances may vary from those shown. Due to our ongoing initiatives, Lee & Plumptre Ltd. reserve the right to change, modify or delete products at any time without notification.