



LEE & PLUMPTON

Inspiration At Work

EXECUTIVE DESKING



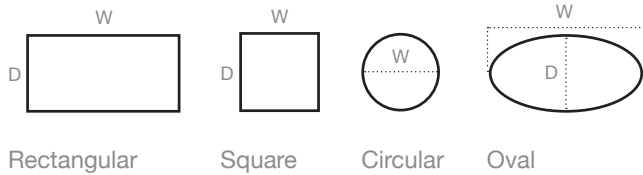


SPIRE

Features & Details

- Sophisticated, elegant design.
- Optional cable management.
- Coordinating storage and meeting tables.
- 25mm worksurfaces.

TABLE SHAPES



SPECIFICATION

- 25mm top made from grade E1 melamine faced high density particle board.
- Cable management and power, data and USB charging modules available.

FRAME

- Steel frame with hydroformed tapered steel legs and cast aluminium feet.



QUICK SHIP

Not available

Wood finishes are heat, stain and scratch resistant when used for their intended purposes.

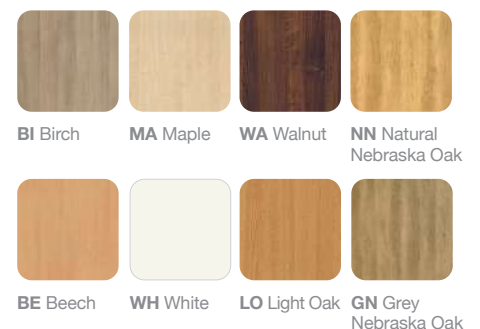
Please add the metal and wood suffix to your code when ordering eg: SPRE1880**CBI**

GROUP A

Metal Finishes



Wood Finishes



QS: Quick Ship | **GROUP A:** Subject to a longer lead time.

● Available
○ Not Available

RECTANGULAR DESK



W x D x H (mm)	Code	QS	Grp A
1800 x 800 x 740	SPRE1880	○	●
2000 x 800 x 740	SPRE2080	○	●

MODESTY PANEL

In addition, wooden modesty panels are available for Spire desks.

WOODEN MODESTY PANEL



Wooden Modesty Panel		Code	QS	Grp A
Fits 800 Deep Rectangular desks	1800 (Width)	SPMO18	○	●
Fits 800 Deep Rectangular desks	2000 (Width)	SPMO20	○	●

The Spire range includes a wide choice of boardroom and meeting room tables – see page 162.





Spire desk shown in walnut with a white frame and modesty panel. Shown with a Signature credenza unit also in walnut with a white base.

QS: Quick Ship | **GROUP A:** Subject to a longer lead time.

● Available
○ Not Available

PERSONAL STORAGE

For accessories, see page 217.

CREDENZA



740mm High Shown

W x D x H (mm)	Code	QS	Grp A
800 Wide			
800 x 600 x 725	SRCZ7280	○	●
800 x 600 x 740	SRCZ7480	○	●

Note: Base and Feet are available in White or Silver.

FILING CABINET



740mm High Shown

Filing Cabinet	W x D x H (mm)	Code	QS	Grp A
2 Drawer	480 x 600 x 725	SRFC72D2	●	●
2 Drawer	480 x 600 x 740	SRFC74D2	●	●

Note: Base and Feet are available in White or Silver.

QS: Quick Ship | **GROUP A:** Subject to a longer lead time.

● Available
○ Not Available

SIDE FILER



740mm High Shown

W x D x H (mm)	Code	QS	Grp A
800 x 600 x 725	SRSF72D2	○	●
800 x 600 x 740	SRSF74D2	●	●

Note: Both drawers feature sliding filing frames as standard.

ACTIVE PEDESTAL



2 Drawer

3 Drawer

Pedestal with Silver Handle	W x D x H (mm)	Code	QS	Grp A
2 Drawer	400 x 600 x 580	AVMP60D2	○	●
3 Drawer	400 x 600 x 580	AVMP60D3	○	●

Full details see pages 208-210. Cushion sold separately.

ACTIVE CADDY



Caddy with Silver Handle	W x D x H (mm)	Code	QS	Grp A
With Doors	800 x 400 x 580	AVMC80SD	○	●
Without Doors	800 x 400 x 580	AVMC80ND	○	●

Full details see pages 208-210. Cushion sold separately.

CUSHIONS



Pedestal Cushion

Caddy Cushion

Cushion	W x D x H (mm)	Code	Group 1	Group 2	Group 3	Group 4	Group 5+
Pedestal	400 x 600 x 30	AVMPCU60G					
Caddy	400 x 400 x 30	AVMCCU80G					

Full details see pages 208-210. For fabric options see page 254-259.

CABLE MANAGEMENT & POWER MODULES

VERTICAL CABLE SPINE (DESKS)



Description	Colour	Code	QS	Grp A
35 x 65 x 800mm (easily manually shortened) with two cable compartments. 3 mounting options - cable tray, wire basket, or desktop.	Black, Silver & White	ACCVSPINE	○	●

Simply add the colour suffix to your code when ordering: **B** Black **S** Silver **W** White.

SLINKY CABLE MANAGER



Description	Colour	Code	QS	Grp A
-------------	--------	------	----	-------

Slinky Cable Manager

Black, Silver & White

ACCMSLINKY

○

●

Simply add the colour suffix to your code when ordering.

B Black, **S** Silver, **W** White.

FLIP TOP POWER MODULES

FLIP TOP POWER MODULES 01



Description	Colour	Code	QS	Grp A
-------------	--------	------	----	-------

2 UK sockets & RJ45 sockets with switch.

- 2 x UK Sockets
- 2 x RJ45 sockets
- Mains lead 2m
- 2 x 2m RJ45 Cat6 data lead

Black
Grey
White

ACPMRJ45

○

●

FLIP TOP POWER MODULES 02



Description	Colour	Code	QS	Grp A
-------------	--------	------	----	-------

2 UK Sockets with switch and USB socket

- 2 x UK Sockets
- 1 x USB A+C Smart Connector
- Mains lead 2m

Black
Grey
White

ACPMSCUK

○

●

POWER MODULES

PORT HOLES



Easy to retrofit, incorporates an under desk, hand tightened barrel nut to fix unit in place. All power and data cables exit from the base of the unit.

Description	Colour	Code	QS	Grp A
-------------	--------	------	----	-------

Port Hole

- 1 x Power socket and 1m mains cable
- Power socket 3.15A individually fused with 1m mains cable to 3 pin connector

Black
Grey
White

ACPORTSOCKBK
ACPORTSOCKGY
ACPORTSOCKWH

○

●

Port Hole with USB Socket

- 1 x Power socket, 1 x USB socket, 1m mains cable, 2m USB lead
- Power socket 3.15A individually fused with 1m mains cable to 3 pin connector and 2m USB lead.

Black
Grey
White

ACPORTUSBBK
ACPORTUSBGY
ACPORTUSBWH

○

●

Power Hole with RJ45 Cat6 Socket

- 1 x Power socket, 1 x RJ45 Cat6 socket, 1m mains cable, 3m data lead
- Power socket 3.15A individually fused with 1m mains cable to 3 pin connector with 3m data lead.

Black,
Grey
White

ACPORTRJ45BK
ACPORTRJ45GY
ACPORTRJ45WH

○

●

Port holes fit desks fitted with round cable ports. Port holes feature individual fuse and are independently certified to BS 5733.

ATMOSPHERE EXECUTIVE



Features & Details

Atmosphere Executive's panel end design creates a premium, sleek appearance. The portfolio of configurations – including wood or metal modesty panels – allows complete flexibility in style, function and aesthetic appearance.

- Versatile solutions for the executive workspace.
- Choice of configurations and coordinating pedestals.
- 25mm panel ends and worksurfaces.
- Curved wood or patterned metal modesty panel.
- Optional cable management.
- Integrated meeting tables.



DESK SPECIFICATION

- 25mm desk top and panel ends made from grade E1 melamine faced high density particle board.
- 18mm curved wood or patterned metal modesty panels.
- Bow fronted work surface available.
- Round metal corner posts in Silver as standard, alternate choice available.
- Corner posts for metal modesty panels will be colour matched to the modesty panel.

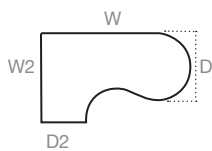
CABLE PORTS

- All desks are supplied with two round, silver coloured cable ports.

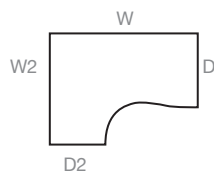
CABLE MANAGEMENT

- Cable management trays and a cable riser are available to purchase separately.
- Cable trays can be mounted inside or outside of the modesty panel.

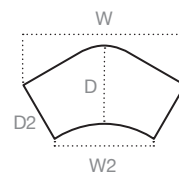
DESK SHAPES



Crescent Conference
(Left hand shown)



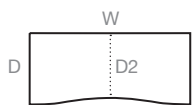
Crescent
(Left hand shown)



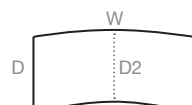
Delta



Rectangular



Double Wave



Double Wave Bow



Wave
(Left hand shown)

Wood Finishes



BI Birch **MA** Maple **WA** Walnut **NN** Natural Nebraska Oak



BE Beech **WH** White **LO** Light Oak **GN** Grey Nebraska Oak

Metal Finishes



S Silver **W** White

Wood finishes are heat, stain and scratch resistant when used for their intended purposes.

Please add the metal and wood suffix to your code when ordering
eg: ATCC20PCML**SBI**

ATMOSPHERE EXECUTIVE

Available with a wide choice of configurations and shapes, Atmosphere Executive desks and workstations can be specified with a curved 18mm wood modesty panel. Alternatively, for a contrasting 'twist', a patterned metal version is available.

The optional cable management trays can be mounted inside or outside of a modesty panel.

The Atmosphere Executive range is part of the newly reimagined Atmosphere brand. Our inhouse design team has undertaken a review of the portfolio to introduce choice to reflect the corporate interior. Alternative finish combinations are available upon request.



Curved Modesty



Metal Modesty

CRESCENT CONFERENCE



Left hand shown

W x D x D2 x H (mm) Wooden Mod	Left Hand	Right Hand	QS	Grp A
2000 x 1200 x 800 x 600 x 725	ATCC20PCML	ATCC20PCMR	○	●
2200 x 1200 x 800 x 600 x 725	ATCC22PCML	ATCC22PCMR	○	●



Left hand shown

W x D x D2 x H (mm) Metal Mod	Left Hand	Right Hand	QS	Grp A
2000 x 1200 x 800 x 600 x 725	ATCC20PMML	ATCC20PMMR	○	●
2200 x 1200 x 800 x 600 x 725	ATCC22PMML	ATCC22PMMR	○	●

For Metal Modesty Panel options, please add the suffix code prior to the wood finish code.
Silver – **S**; White – **W**. E.g. ATCC20PMMLS (then the wood finish code).

CRESCENT



Left hand shown

W x D x D2 x H (mm) Wooden Mod	Left Hand	Right Hand	QS	Grp A
1400 x 1200 x 800 x 600 x 725	ATCR14PCML	ATCR14PCMR	○	●
1600 x 1200 x 800 x 600 x 725	ATCR16PCML	ATCR16PCMR	○	●
1800 x 1200 x 800 x 600 x 725	ATCR18PCML	ATCR18PCMR	○	●



Left hand shown

W x D x D2 x H (mm) Metal Mod	Left Hand	Right Hand	QS	Grp A
1400 x 1200 x 800 x 600 x 725	ATCR14PMML	ATCR14PMMR	○	●
1600 x 1200 x 800 x 600 x 725	ATCR16PMML	ATCR16PMMR	○	●
1800 x 1200 x 800 x 600 x 725	ATCR18PMML	ATCR18PMMR	○	●

For Metal Modesty Panel options, please add the suffix code prior to the wood finish code.
Silver – **S**; White – **W**. E.g. ATCC20PMMLS (then the wood finish code).

DELTA



W x W2 x D x D2 x H (mm) Wooden Mod	Curved Mod	QS	Grp A
2076 x 1279 x 1200 x 800 x 725	ATDL12PCM	○	●



W x W2 x D x D2 x H (mm) Metal Mod	Metal Mod	QS	Grp A
2076 x 1279 x 1200 x 800 x 725	ATDL12PMM	○	●

For Metal Modesty Panel options, please add the suffix code prior to the wood finish code.
Silver – **S**; White – **W**. E.g. ATCC20PMMLS (then the wood finish code).



DOUBLE WAVE BOW



W x W2 x D x D2 x H (mm) Wooden Mod	Curved Mod	QS	Grp A
1600 x 875 x 800 x 725	ATWB16PCM	○	●
1800 x 875 x 800 x 725	ATWB18PCM	○	●
2000 x 875 x 800 x 725	ATWB20PCM	○	●



W x W2 x D x D2 x H (mm) Metal Mod	Metal Mod	QS	Grp A
1600 x 875 x 800 x 725	ATWB16PMM	○	●
1800 x 875 x 800 x 725	ATWB18PMM	○	●
2000 x 875 x 800 x 725	ATWB20PMM	○	●

For Metal Modesty Panel options, please add the suffix code prior to the wood finish code.
Silver – **S**; White – **W**. E.g. ATCC20PMMLS (then the wood finish code).

DOUBLE WAVE



W x W2 x D x D2 x H (mm) Wooden Mod	Curved Mod	QS	Grp A
1600 x 875 x 725 x 725	ATDW16PCM	○	●
1800 x 875 x 725 x 725	ATDW18PCM	○	●



W x W2 x D x D2 x H (mm) Metal Mod	Metal Mod	QS	Grp A
1600 x 875 x 725 x 725	ATDW16PMM	○	●
1800 x 875 x 725 x 725	ATDW18PMM	○	●

For Metal Modesty Panel options, please add the suffix code prior to the wood finish code.
Silver – **S**; White – **W**. E.g. ATCC20PMMLS (then the wood finish code).





WAVE



Left hand shown



Left hand shown

W x D x D2 x H (mm) Wooden Mod	Left Hand	Right Hand	QS	Grp A
600 Deep				
1200 x 800 x 600 x 725	ATSW12PCML	ATSW12PCMR	○	●
1400 x 800 x 600 x 725	ATSW14PCML	ATSW14PCMR	○	●
1600 x 800 x 600 x 725	ATSW16PCML	ATSW16PCMR	○	●
800 Deep				
1200 x 1000 x 800 x 725	ATWV12PCML	ATWV12PCMR	○	●
1400 x 1000 x 800 x 725	ATWV14PCML	ATWV14PCMR	○	●
1600 x 1000 x 800 x 725	ATWV16PCML	ATWV16PCMR	○	●
1800 x 1000 x 800 x 725	ATWV18PCML	ATWV18PCMR	○	●

W x D x D2 x H (mm) Metal Mod	Left Hand	Right Hand	QS	Grp A
600 Deep				
1200 x 800 x 600 x 725	ATSW12PMML	ATSW12IMMR	○	●
1400 x 800 x 600 x 725	ATSW14PMML	ATSW14PMMR	○	●
1600 x 800 x 600 x 725	ATSW16PMML	ATSW16PMMR	○	●
800 Deep				
1200 x 1000 x 800 x 725	ATWV12PMML	ATWV12PMMR	○	●
1400 x 1000 x 800 x 725	ATWV14PMML	ATWV14PMMR	○	●
1600 x 1000 x 800 x 725	ATWV16PMML	ATWV16PMMR	○	●
1800 x 1000 x 800 x 725	ATWV18PMML	ATWV18PMMR	○	●

For Metal Modesty Panel options, please add the suffix code prior to the wood finish code.
Silver – S; White – W. E.g. ATCC20PMMLS (then the wood finish code).

RECTANGULAR



W x D x D2 x H (mm)	QS	Grp A	Wooden Mod	RRP	Metal Mod
600 Deep					
800 x 600 x 725	○	●	ATRS80PCM		ATRS80PMM
1000 x 600 x 725	○	●	ATRS10PCM		ATRS10PMM
1200 x 600 x 725	○	●	ATRS12PCM		ATRS12PMM
1400 x 600 x 725	○	●	ATRS14PCM		ATRS14PMM
1600 x 600 x 725	○	●	ATRS16PCM		ATRS16PMM
1800 x 600 x 725	○	●	ATRS18PCM		ATRS18PMM
800 Deep					
800 x 800 x 725	○	●	ATRE80PCM		ATRE80PMM
1000 x 800 x 725	○	●	ATRE10PCM		ATRE10PMM
1200 x 800 x 725	○	●	ATRE12PCM		ATRE12PMM
1400 x 800 x 725	○	●	ATRE14PCM		ATRE14PMM
1600 x 800 x 725	○	●	ATRE16PCM		ATRE16PMM
1800 x 800 x 725	○	●	ATRE18PCM		ATRE18PMM

For Metal Modesty Panel options, please add the suffix code prior to the wood finish code.
Silver – S; White – W. E.g. ATCC20PMMLS (then the wood finish code).



PEDESTALS

All Atmosphere pedestals come with metal to metal fixings and metal drawers adding extra durability and strength. Atmosphere pedestals also include an in-built anti-tilt mechanism for safety.



Mobile
2 Drawer



Mobile
3 Drawer



Under Desk
3 Drawer



Under Desk
4 Drawer



Narrow Under
Desk, 3 Drawer



Desk High
3 Drawer



Desk High
4 Drawer

Pedestal	W x D x H (mm)	2 Drawer	3 Drawer	4 Drawer
Mobile	430 x 600 x 545	ATMP60D2	ATMP60D3	–
Under Desk	430 x 600 x 665	–	ATUP60D3	ATUP60D4
Narrow Under Desk	342 x 600 x 665	–	ATNP60D3	–
Desk High 600 D	430 x 600 x 725	–	ATDP60D3	ATDP60D4
Desk High 800 D	430 x 800 x 725	–	ATDP80D3	ATDP80D4

Mobile Conversion Kit	Description	Code
Mobile Conversion Kit	Converts desk high pedestal to mobile	ATMPCONKITS

ACTIVE PEDESTAL



2 Drawer



3 Drawer

Pedestal with Silver Handle	W x D x H (mm)	Code	QS	Grp A
2 Drawer	400 x 600 x 580	AVMP60D2	○	●
3 Drawer	400 x 600 x 580	AVMP60D3	○	●

Full details see pages 208-210. Cushion sold separately.

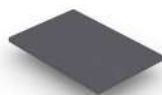
ACTIVE CADDY



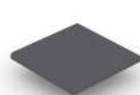
Caddy with Silver Handle	W x D x H (mm)	Code	QS	Grp A
With Doors	800 x 400 x 580	AVMC80SD	○	●
Without Doors	800 x 400 x 580	AVMC80ND	○	●

Full details see pages 208-210. Cushion sold separately.

CUSHIONS



Pedestal Cushion



Caddy Cushion

Cushion	W x D x H (mm)	Code	Group 1	Group 2	Group 3	Group 4	Group 5+
Pedestal	400 x 600 x 30	AVMPCU60G					
Caddy	400 x 400 x 30	AVMCCU80G					

Full details see pages 208-210. For fabric options see page 254-259.

CABLE MANAGEMENT

All Atmosphere desks are available with optional cable management which slots easily into place upon assembly.

CABLE TRAYS



The cable tray can be mounted inside or outside of a modesty panel. Available in Silver with or without a socket adaptor.

Description	Code	QS	Grp A
Crescent Conference			
Fits return of any desk	ATCTRAY12CR	○	●
Fits 2000mm wide desk	ATCTRAY16CR	○	●
Fits 2200mm wide desk	ATCTRAY18CR	○	●
Rectangular			
Fits 800mm wide desk	ATCTRAY80RE	○	●
Fits 1000mm wide desk	ATCTRAY10RE	○	●
Fits 1200mm wide desk	ATCTRAY12RE	○	●
Fits 1400mm wide desk	ATCTRAY14RE	○	●
Fits 1600mm wide desk	ATCTRAY16RE	○	●
Fits 1800mm wide desk	ATCTRAY18RE	○	●
Delta			
Fits 1200mm wide desk	ATCTRAY12DL	○	●

PORT HOLES



Easy to retrofit, incorporates an under desk, hand tightened barrel nut to fix unit in place. All power and data cables exit from the base of the unit.

Description	Colour	Code	QS	Grp A
Port Hole	1 x Power socket and 1m mains cable • Power socket 3.15A individually fused with 1m mains cable to 3 pin connector	Black Grey White	ACPORTSOCKBK ACPORTSOCKGY ACPORTSOCKWH	○ ●
Port Hole with USB Socket	1 x Power socket, 1 x USB socket, 1m mains cable, 2m USB lead • Power socket 3.15A individually fused with 1m mains cable to 3 pin connector and 2m USB lead.	Black Grey White	ACPORTUSBBK ACPORTUSBGY ACPORTUSBWH	○ ●
Power Hole with RJ45 Cat6 Socket	1 x Power socket, 1 x RJ45 Cat6 socket, 1m mains cable, 3m data lead • Power socket 3.15A individually fused with 1m mains cable to 3 pin connector with 3m data lead.	Black, Grey White	ACPORTRJ45BK ACPORTRJ45GY ACPORTRJ45WH	○ ●

Port holes feature individual fuse and are independently certified to BS 5733.

AIRCHARGE UNITS



Description	Colour	Code	QS	Grp A
Aircharge	Aluminium/Black	ACSCABK	○	●
Aircharge	Aluminium/White	ACSCAWH	○	●
Aircharge	Nylon/Black	ACSCNBK	○	●
Aircharge	Nylon/White	ACSCNWH	○	●

- Wireless charging for smartphones and tablets.
- Fixing via 80mm cable port / aperture.
- Power plug included.

A COMMITMENT TO SERVICE

Dedicated Customer Service

The values of Integrity, Commitment, Development, Accountability and Teamwork underpin the culture and aspirations of the Company. We strive to design and develop an extensive portfolio of quality products which combine aesthetics and practicality to offer Best Value solutions. The ongoing monitoring of every aspect of the business ensures we are able to implement continuous improvements to maintain our determined commitment to customer service.



Inhouse Delivery Fleet

We operate and manage our own delivery fleet and are targeted for accurate, on time order fulfillment. Rapid turnaround is guaranteed by our weekly scheduled deliveries and, on many items, we also offer a 'Quick Ship' service. Standard deliveries are free of charge with next day delivery on stocked items or customer collection (with 24 hours' notice) also available.

- Quick Ship: Products delivered within 5 working days from your order deadline date.
- Group A: Products subject to a longer lead time (typically 3 weeks).



Extensive Stock Holding

Our 200,000 square feet manufacturing base includes an extensive warehousing facility. We hold stock of an estimated 50,000 items including raw materials and finished goods.

This substantial financial investment provides a further demonstration of our determined commitment to the highest levels of customer service.

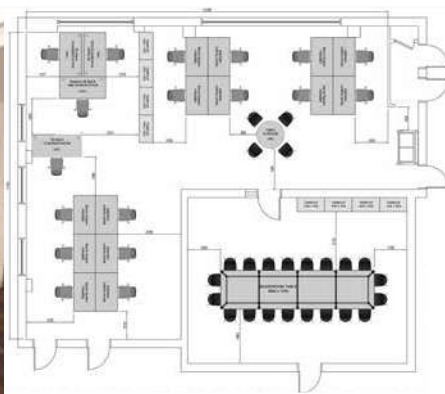


INHOUSE EXPERTISE

Bespoke Design

Unlike many manufacturers, we are able to develop customised solutions to match each client's precise requirements. With its own production unit and dedicated team, our Bespoke department can design and manufacture products from original 'sketches' or develop existing range items to customised specifications.

Your dedicated account manager, together with a member of the Bespoke team, will work with you to develop a solution to match your requirement and budget.



Planning & Design

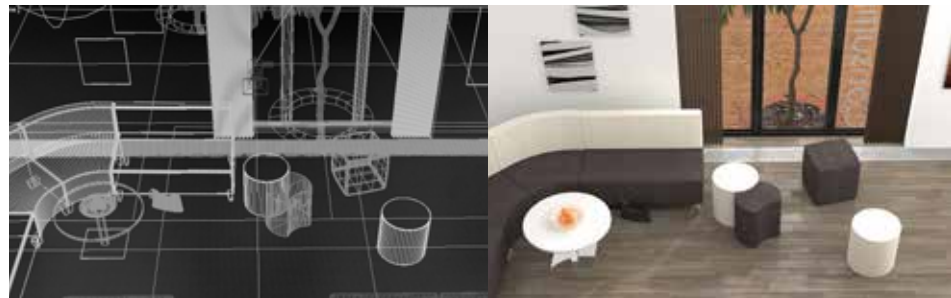
Our highly experienced designers are available to offer expert space planning and design services. Working from simple sketches or architect plans, we can recommend product choice, configurations and finishes to match desired outcomes and available budget.

We are able to advise regarding effective space utilisation and also work collaboratively to consider lighting, team requirements, storage as well as existing building services and future reconfigurations of any environments.

CGI Expertise

We have an extensive library of product images together with a portfolio of 3D CAD files. Customers can download files from our web site or upon request.

The wide choice of CGI, photo-realistic room scenes can help visualise proposed interiors, colours, and designs.



Sales & Customer Support

We know relationships are important. Our nationwide sales team offers 'face to face' meetings to provide expert support, advice and guidance as well as facilitating access to our extensive inhouse services including customised marketing materials, product samples and collaborative events.

Each and every order is carefully monitored and tracked by our customer services team. Fully trained advisors provide a dedicated point of contact to manage queries and requests as well as full after-sales support.



A COMMITMENT TO QUALITY

Continuous investment in facilities and training, coupled with a dedicated workforce and strong supplier relationships, ensures the quality, consistency and reliability our customers expect. The management and measurement of our internal processes and procedures drives our quest for development and improvement and, therefore, ongoing customer satisfaction.

We have an established reputation for the supply of robust, quality products. We design and manufacture to comply with relevant British and international standards – covering dimensions; ergonomics; strength & stability; moving parts; fire regulations; and electrical systems. The inherent strength and durability means that our products will withstand the rigours of daily ‘wear and tear’ thus extending the lifecycle. Our furniture includes a 7-year guarantee (unless specified).

Copies of our credentials and certifications are available at leeandplumpton.co.uk



Quality Management
System BS EN ISO
9001



Environmental Management
System BS EN ISO 14001



Occupational Health And
Safety Management System
OHSAS 45001 (OH&S)



Commercial Interiors
U.K.
(CIUK)



Commercial Furniture
Advisory Service (CFAS)



Members Of Furniture
Industry Research
Association (FIRA)



RESPONSIBLE MANUFACTURING

As a major manufacturer, we recognise our responsibility to consider all areas of our business in terms of environmental impact. From management, administration and product design through to facilities management and logistics together with manufacturing processes and procedures, we strive to introduce positive changes to protect the planet.

Our efforts embrace the full spectrum of business activities including reductions in carbon emissions through to waste prevention, recycling initiatives, transportation, investment in solar power and procurement practices. Sustainability and circularity principles are embedded within our product design and development processes. We are committed to minimising our carbon impact and working towards a greener future.

Environmental Management

We measure and assess our efforts through our integrated Environmental Management System. Registered to ISO 14001: 2015, our system incorporates clear objectives which are monitored and measured through a documented programme with regular reviews for continuous improvement.



Chain of Custody

Our Chain of Custody certification (COC) with the Forest Stewardship Council® (FSC®) represents the unbroken path that certificated products take, from the sustainably managed forests of origin, to the consumer.



Sustainability

Created in 2006, the Furniture Industry Sustainability Programme (FISP) has become established as the furniture industry forum on all environmental and sustainability issues. These considerations relate to all aspects of the industry's business, from purchasing and procurement through to end of product life, including social, ethical and employment concerns as well as waste, energy and emissions.

We have achieved full membership of FISP and this enables us to focus on reducing our social and environmental impact. We have been proud members of the Furniture Industry Sustainability Programme (FISP) since 2007. Membership is subject to regular independent re-audits to monitor our continuing commitment.



Energy Management

Our energy management strategy includes a number of practices to minimise usage throughout all areas of the business. In addition, in the last year our solar panels have generated over 160,000 Kwh of electricity. Nearly half of the output is returned to the National Grid – sufficient to power 26 three/four bedroom homes for a year.



LEE & PLUMPTON

Bunns Bank | Attleborough Norfolk | NR17 1QD
T: 01953 453830 | E: sales@leeandplumpton.co.uk

leeandplumpton.co.uk



@LEEANDPLUMPTON

October 2022_v1.1

E&OE October 2022

Images featured within this brochure are for illustrative purposes and appearances may vary from those shown. Due to our ongoing initiatives, Lee & Plumptre Ltd. reserve the right to change, modify or delete products at any time without notification.

