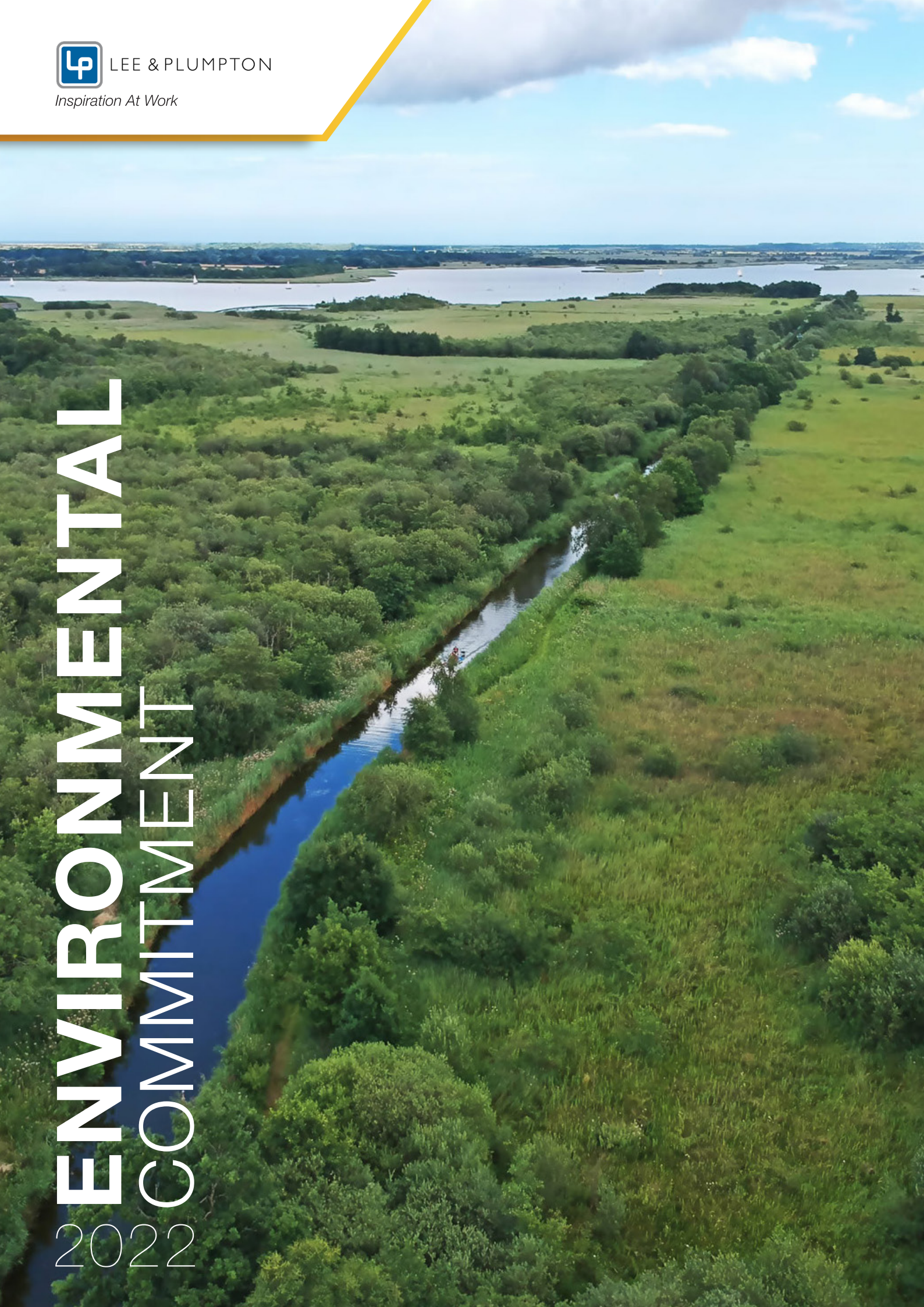


ENVIRONMENTAL COMMITMENT 2022



RESPONSIBLE MANUFACTURING

As a major manufacturer, we recognise our responsibility to consider all areas of our business in terms of environmental impact. From management, administration, and product design through to facilities management and logistics together with manufacturing processes and procedures, we strive to introduce positive changes to protect the planet.

We measure and assess our efforts through our integrated Environmental Management System. Registered to ISO 14001: 2015, our system incorporates clear objectives which are monitored and measured through a documented programme with regular reviews for continuous improvement.

Our commitments embrace our environmental, quality, and sustainable timber management. We consistently monitor our performance to find ways to improve year-on-year. We have held full membership of the Furniture Industry Sustainability Programme since 2007. This status, together with registration to ISO 14001, is retained through a regular, independent audit process.

We are committed to minimising our carbon impact and working towards a greener future.



Energy Usage

Our energy management strategy is targeted to minimise usage throughout all areas of the business. This approach includes our ongoing staff training programme to raise energy awareness and opportunities for reductions in overall consumption.

Installed in 2016, our solar panels generate over 160,000 Kwh of electricity. Nearly half of the output is returned to the National Grid – sufficient to power 26 three/four bedroom homes for a year.

Electricity usage reduction targets are monitored and achieved through a range of initiatives. We have, for example, relocated production machinery to maximise efficiency of the extraction equipment. Similarly, the Ecogate system turns off extraction whilst machines are idling. Manufacturing production is also scrutinised to maximise efficiencies. For example, we can now generally limit the use of the paint plant to one day a week whilst still meeting delivery commitments.

Our inhouse logistics team is responsible for route planning and overall transport efficiency. As well as utilising software support, the team will schedule return journeys via suppliers to prevent additional journeys. Driver safety and efficiency training is regularly undertaken.





Zero to landfill

As a conscientious and socially responsible manufacturer, we're extremely proud to say that we send zero waste to landfill



Our production processes maximise material usage to minimise waste



Materials are selected to ensure any waste has maximum recycling potential. Any waste is collected for reuse or recycling



In the last year, we recycled 194 tonnes of sawdust – the equivalent weight of 32 African elephants



We also recycled 8 tonnes of cardboard – that's the equivalent weight of over 6 adult rhinos



Waste is sent to a state-of-the-art facility capable of generating renewable energy



Mechanical sorting techniques combined with manual quality checks enable over 95% of material to be reprocessed into new products

As part of our ISO EN BS 14001 certificated environmental management system we continually strive to minimise waste

PRODUCT DESIGN & MANUFACTURING

We remain focussed on maintaining our reputation for the supply of robust, quality products. We design and manufacture to comply with relevant British and international standards – covering dimensions; ergonomics; strength & stability; moving parts; fire regulations; and electrical systems. The inherent strength and durability ensure that our products will withstand the rigours of daily ‘wear and tear’ thus extending the lifecycle.

Procurement policies mean that materials and chemicals are REACH compliant and known to be low risk in emitting volatile organic compounds (VOCs) including E1 standard melamine faced chipboard (MFC).

Our product design principles are based upon modularity. This approach not only makes good economic sense enabling us to offer ‘best value’ to our customers but also minimises waste. The inhouse design team works closely with manufacturing and procurement colleagues to ensure our policies and standards are adhered to and cascaded through our supply chain. Working collaboratively, we identify solutions to reduce waste, embrace sustainability and maximise longevity of finished products and components.

Our inhouse design and manufacturing teams maintain a database of product drawings, materials, and components. This approach facilitates future availability of finishes and parts as well as disassembly.

Chain of Custody

Our Chain of Custody certification (COC) with the Forest Stewardship Council® (FSC®) represents the unbroken path that certificated products take, from the sustainably managed forests of origin to the consumer.

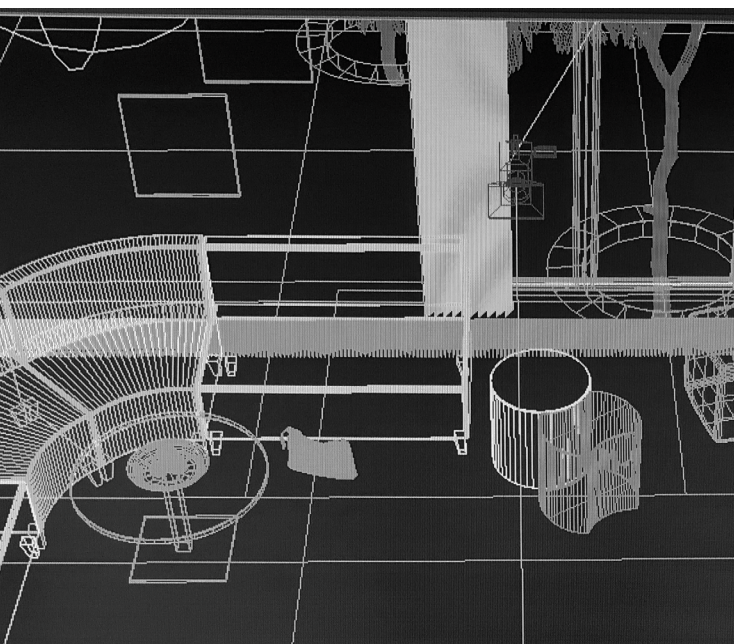
We are diligent in our approach. All wood, even down to the dowels, are certified.



Waste Management

We have retained our ‘Zero to landfill’ status for many years. Most of our waste is segregated for recycling through regulated contractors with the remainder sent to Energy from Waste.

We review our product packaging to ensure it maximises protection during transit whilst minimising future waste. In the last year, we have reduced polystyrene content through the introduction of an alternative cardboard solution.



STANDARDS & CERTIFICATIONS



Quality Management System BS EN ISO 9001



Environmental Management System BS EN ISO 14001



Occupational Health And Safety Management System OHSAS 45001 (OH&S)



British Contract Furnishing Association (BCFA)



Commercial Furniture Advisory Service (CFAS)



Members Of Furniture Industry Research Association (FIRA)



Furniture Industry Sustainability Programme (FISP)



Forest Stewardship Council (FSC)





LEE & PLUMPTON

Bunns Bank | Attleborough Norfolk | NR17 1QD
T: 01953 453830 | E: sales@leeandplumpton.co.uk

leeandplumpton.co.uk



@LEEANDPLUMPTON

July 2022_v1.1

E&OE July 2022

Images featured within this brochure are for illustrative purposes and appearances may vary from those shown. Due to our ongoing initiatives, Lee & Plumpton Ltd. reserve the right to change, modify or delete products at any time without notification.

