



LEE & PLUMPTON

Inspiration At Work

CHAIRS & STOOLS



HEYDON



Features & Details

- Swedish design with White or Black laminate backs.
- A wide choice of chair design and base options.
- Stackable fully upholstered coordinating stools.



The fully upholstered design allows for single or mixed upholstery. For colour fabric groups refer to page 254-259.

Please add a **W** (White) or **B** (Black) to your product code for your desired laminate finish. In addition, please add the fabric group code to your product code when ordering. Please refer to coding table, see right. e.g: CHHE1FLWG1

FABRIC GROUP CODING

Single & Seat/Inner Fabric Group	Code	Mixed Fabric Group	Code
Fabric Group 1	G1	Fabric Group 1	G1M
Fabric Group 2	G2	Fabric Group 2	G2M
Fabric Group 3	G3	Fabric Group 3	G3M
Fabric Group 4	G4	Fabric Group 4	G4M

W = Width, D = Depth, H = Height, SH = Seat Height

WOODEN LEGS



Heydon Chair	Laminate Back, Chair (No Arms)	Laminate Back, Armchair	Fully Upholstered, Chair (No Arms)	Fully Upholstered, Armchair
Code	CHHE1FL	CHHE2FL	CHHE3FL	CHHE4FL
	Seat/Inner Fabric	Seat/Inner Fabric	Single Fabric	Mixed Fabric
Fabric Group 1				
Fabric Group 2				
Fabric Group 3				
Fabric Group 4				

SKID FRAME

Features a Chrome wire skid frame.



Heydon Chair	Laminate Back, Chair (No Arms)	Laminate Back, Armchair	Fully Upholstered, Chair (No Arms)	Fully Upholstered, Armchair
Code	CHHE1CS	CHHE2CS	CHHE3CS	CHHE4CS
	Seat/Inner Fabric	Seat/Inner Fabric	Single Fabric	Mixed Fabric
Fabric Group 1				
Fabric Group 2				
Fabric Group 3				
Fabric Group 4				

4 STAR BASE, GAS LIFT

Features a stylish polished aluminium base, rocking tilt mechanism and gas lift.



Dimensions: W 600mm D 600mm H 850-990mm SH 450-590mm

Heydon Chair	Laminate Back, Chair (No Arms)	Laminate Back, Armchair	Fully Upholstered, Chair (No Arms)	Fully Upholstered, Armchair
Code	CHHE1ST	CHHE2ST	CHHE3ST	CHHE4ST
	Seat/Inner Fabric	Seat/Inner Fabric	Single Fabric	Mixed Fabric

Fabric Group 1

Fabric Group 2

Fabric Group 3

Fabric Group 4

SPIDER LEGS

Features Chrome legs with 4 soft wheel matching chrome castors.



Dimensions: W 600mm D 560mm H 850mm SH 460mm

Heydon Chair	Laminate Back, Chair (No Arms)	Laminate Back, Armchair	Fully Upholstered, Chair (No Arms)	Fully Upholstered, Armchair
Code	CHHE1MO	CHHE2MO	CHHE3MO	CHHE4MO
	Seat/Inner Fabric	Seat/Inner Fabric	Single Fabric	Mixed Fabric

Fabric Group 1

Fabric Group 2

Fabric Group 3

Fabric Group 4

STACKING STOOLS



Large Stool



Small Stool

Stool	Dimensions	Code	Fabric Group 1	Fabric Group 2	Fabric Group 3	Fabric Group 4
Large	W 580 D 570 H 450	CHHEHS				
Small	W 475 D 345 H 370	CHHEL				

BRANDON

Features & Details

- Multipurpose chair available with cantilever or 4-leg frame.
- Chrome frame.
- Stackable design (up to 5 chairs high).
- Black outer back and seat panel for durability.
- Option of black PU arms.



Choose from a range of fabrics.

For colour fabric groups refer to page 254-259.

BRANDON MEETING CHAIR

Cantilever Frame, optional black PU arms.



Fabric Group	Code
Fabric Group 1	CHBRCLG1
Fabric Group 2	CHBRCLG2
Fabric Group 3	CHBRCLG3
Fabric Group 4	CHBRCLG4



Fabric Group	Code
Fabric Group 1	CHBRCLBAG1
Fabric Group 2	CHBRCLBAG2
Fabric Group 3	CHBRCLBAG3
Fabric Group 4	CHBRCLBAG4

BRANDON MEETING CHAIR

4 Leg Frame, optional black PU arms.



Fabric Group	Code
Fabric Group 1	CHBRFLG1
Fabric Group 2	CHBRFLG2
Fabric Group 3	CHBRFLG3
Fabric Group 4	CHBRFLG4



Fabric Group	Code
Fabric Group 1	CHBRFLBAG1
Fabric Group 2	CHBRFLBAG2
Fabric Group 3	CHBRFLBAG3
Fabric Group 4	CHBRFLBAG4

ASHBY

Features & Details

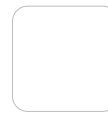
- Distinctive design styling with a wide choice of leg frames available.
- Poseur height option.
- Polypropylene shell for durability and easy cleaning.
- 1 Year Guarantee.



GY Grey



GR Green



WH White



MU Mustard



TQ Turquoise

W = Width, D = Depth, H = Height, SH = Seat Height

Please add the colour suffix to your code when ordering eg: CHASACBK



ASHBY CHAIR,
LEG STYLE A

Dimensions

W 580mm D 500mm H 810mm SH 450mm

Frame: Chrome Stacking: 4

Code

CHASAC



ASHBY CHAIR,
LEG STYLE B

Dimensions

W 560mm D 525mm H 810mm SH 450mm

Frame: Chrome Stacking: 4

Code

CHASBC



ASHBY CHAIR,
LEG STYLE K

Dimensions

W 505mm D 480mm H 810mm SH 450mm

Frame: Beech or Black

Frame

Code

Beech CHASKBE

Black CHASKB



ASHBY CHAIR,
LEG STYLE M

Dimensions

W 510mm D 480mm H 800mm SH 450mm

Frame: Black Steel

Code

CHASMB



ASHBY CHAIR,
LEG STYLE N

Dimensions

W 510mm D 480mm H 800mm SH 450mm

Frame: Chrome

Code

CHASNC



ASHBY,
HIGH STOOL

Dimensions

W 590mm D 500mm H 970mm SH 760mm

Frame: Chrome Stacking: 4

Code

CHASHSC

LINGWOOD

Features & Details

- A stylish collection with a grey fabric upholstered option.
- Mid and poseur height options.
- A wide choice of leg frames to suit varying interior styles.
- 1 Year Guarantee.

W = Width, **D** = Depth, **H** = Height, **SH** = Seat Height



Black

LINGWOOD CHAIR,
LEG STYLE K

Dimensions

W 460mm **D** 465mm **H** 835mm **SH** 450mm

Frame: Beech or Black

Frame	Code
Beech	CHLIKBE
Black	CHLIKB
Beech (Grey Fabric)	CHLIKBEГУ
Black (Grey Fabric)	CHLIKBGU



Black

LINGWOOD MEDIUM-HIGH
STOOL

Dimensions

W 470mm **D** 485mm **H** 1065mm **SH** 695mm

Frame: Beech or Black

Frame	Code
Beech	CHLIMSBE
Black	CHLIMSB
Beech (Grey Fabric)	CHLIMSBEGU
Black (Grey Fabric)	CHLIMSBGU



LINGWOOD HIGH
STOOL

Dimensions

W 510mm **D** 490mm **H** 1015mm **SH** 655mm

Frame: Chrome

Frame	Code
Chrome	CHLIHSC
Chrome (Grey Fabric)	CHLIHSCGU



LINGWOOD CHAIR,
LEG STYLE E

Dimensions

W 480mm **D** 495mm **H** 820mm **SH** 450mm

Frame: Chrome **Stacking:** 4

Seat	Code
Standard	CHLIEC
Grey Fabric	CHLIECGU



LINGWOOD CHAIR,
LEG STYLE F

Dimensions

W 510mm **D** 510mm **H** 825mm **SH** 450mm

Frame: Chrome **Stacking:** 4

Seat	Code
Standard	CHLIFC
Grey Fabric	CHLIFCGU



LINGWOOD CHAIR,
LEG STYLE M

Dimensions

W 510mm **D** 470mm **H** 800mm **SH** 450mm

Frame: Black Steel

Seat	Code
Standard	CHLIMB
Grey Fabric	CHLIMBGU



LINGWOOD CHAIR,
LEG STYLE N

Dimensions

W 510mm **D** 470mm **H** 800mm **SH** 450mm

Frame: Chrome

Seat	Code
	CHLINC
Grey Fabric	CHLINGU

CHLINC

Grey Fabric CHLINGU



WROXHAM

Features & Details

- Coordinating tub chairs - ideal for foyer, reception & breakout spaces.
- Polypropylene seat and back with grey upholstered option.
- 1 Year Guarantee.



GY Grey



WH White

A grey fabric upholstered option is also available.



GU Grey Fabric

W = Width, **D** = Depth, **H** = Height, **SH** = Seat Height



Black

Beech

WROXHAM CHAIR,
LEG STYLE K

Dimensions

W 580mm **D** 590mm **H** 850mm **SH** 450mm

Frame: Beech or Black

Frame	Code
Beech	CHWRKBE
Black	CHWRKB
Beech (Grey Fabric)	CHWRKBEGU
Black (Grey Fabric)	CHWRKBGU

Beech CHWRKBE

Black CHWRKB

Beech (Grey Fabric) CHWRKBEGU

Black (Grey Fabric) CHWRKBGU



WROXHAM CHAIR,
LEG STYLE M

Dimensions

W 580mm **D** 575mm **H** 850mm **SH** 450mm

Frame: Black Steel

Frame	Code
Black	CHWRMB
Black (Grey Fabric)	CHWRMBGU

Black CHWRMB

Black (Grey Fabric) CHWRMBGU



WROXHAM CHAIR,
LEG STYLE N

Dimensions

W 580mm **D** 575mm **H** 850mm **SH** 450mm

Frame: Chrome

Frame	Code
Black	CHWRNB
Black (Grey Fabric)	CHWRNBGU

Black CHWRNB

Black (Grey Fabric) CHWRNBGU

HOLT & CARBROOKE

Features & Details

Holt

- Practical polypropylene shell with upholstered seat pad for added comfort.
- 1 Year Guarantee.



GY Grey



WH White

Please add the colour suffix to your code when ordering eg: CHHOCLGY

Carbrooke

- Combining the practicality of polypropylene with the beauty of natural wood legs.
- Stackable (up to 4 chairs).
- 1 Year Guarantee.



BK Black



GY Grey



WH White

Please add the colour suffix to your code when ordering eg: CHWRNCGY

W = Width, D = Depth, H = Height, SH = Seat Height



Beech



HOLT CHAIR, 4 LEG

Dimensions

W 610mm D 570mm H 760mm SH 460mm

Frame: Beech Raw, Beech Clear Lacquer or Black

Frame

Code

Beech, Raw CHHOFLR

Beech, Clear Lacquer CHHOFLBE

Black CHHOFLB

HOLT, SKID FRAME

Dimensions

W 570mm D 580mm H 735mm SH 450mm

Frame: Steel Rod Chrome Plated

Code

CHHOCLC



CARBROOKE CHAIR

Dimensions

W 430mm D 480mm H 750mm SH 450mm

Frame: Beech Stacking: 4

Code

CHCABE



FEED YOUR
DREAMS

A COMMITMENT TO SERVICE

Dedicated Customer Service

The values of Integrity, Commitment, Development, Accountability and Teamwork underpin the culture and aspirations of the Company. We strive to design and develop an extensive portfolio of quality products which combine aesthetics and practicality to offer Best Value solutions. The ongoing monitoring of every aspect of the business ensures we are able to implement continuous improvements to maintain our determined commitment to customer service.



Inhouse Delivery Fleet

We operate and manage our own delivery fleet and are targeted for accurate, on time order fulfillment. Rapid turnaround is guaranteed by our weekly scheduled deliveries and, on many items, we also offer a 'Quick Ship' service. Standard deliveries are free of charge with next day delivery on stocked items or customer collection (with 24 hours' notice) also available.

- Quick Ship: Products delivered within 5 working days from your order deadline date.
- Group A: Products subject to a longer lead time (typically 3 weeks).



Extensive Stock Holding

Our 200,000 square feet manufacturing base includes an extensive warehousing facility. We hold stock of an estimated 50,000 items including raw materials and finished goods.

This substantial financial investment provides a further demonstration of our determined commitment to the highest levels of customer service.

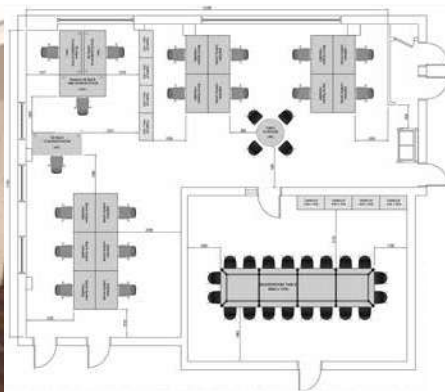


INHOUSE EXPERTISE

Bespoke Design

Unlike many manufacturers, we are able to develop customised solutions to match each client's precise requirements. With its own production unit and dedicated team, our Bespoke department can design and manufacture products from original 'sketches' or develop existing range items to customised specifications.

Your dedicated account manager, together with a member of the Bespoke team, will work with you to develop a solution to match your requirement and budget.



Planning & Design

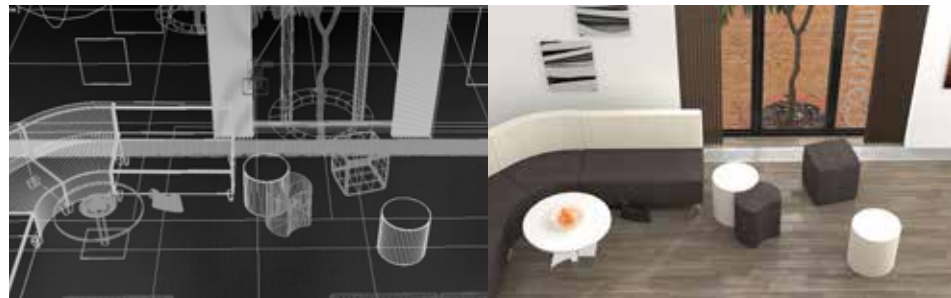
Our highly experienced designers are available to offer expert space planning and design services. Working from simple sketches or architect plans, we can recommend product choice, configurations and finishes to match desired outcomes and available budget.

We are able to advise regarding effective space utilisation and also work collaboratively to consider lighting, team requirements, storage as well as existing building services and future reconfigurations of any environments.

CGI Expertise

We have an extensive library of product images together with a portfolio of 3D CAD files. Customers can download files from our web site or upon request.

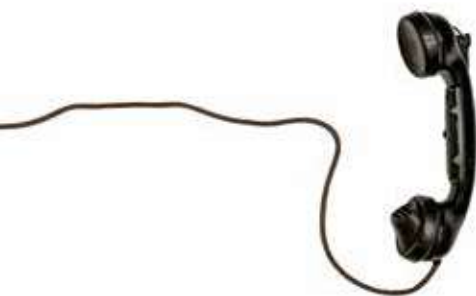
The wide choice of CGI, photo-realistic room scenes can help visualise proposed interiors, colours, and designs.



Sales & Customer Support

We know relationships are important. Our nationwide sales team offers 'face to face' meetings to provide expert support, advice and guidance as well as facilitating access to our extensive inhouse services including customised marketing materials, product samples and collaborative events.

Each and every order is carefully monitored and tracked by our customer services team. Fully trained advisors provide a dedicated point of contact to manage queries and requests as well as full after-sales support.



A COMMITMENT TO QUALITY

Continuous investment in facilities and training, coupled with a dedicated workforce and strong supplier relationships, ensures the quality, consistency and reliability our customers expect. The management and measurement of our internal processes and procedures drives our quest for development and improvement and, therefore, ongoing customer satisfaction.

We have an established reputation for the supply of robust, quality products. We design and manufacture to comply with relevant British and international standards – covering dimensions; ergonomics; strength & stability; moving parts; fire regulations; and electrical systems. The inherent strength and durability means that our products will withstand the rigours of daily ‘wear and tear’ thus extending the lifecycle. Our furniture includes a 7-year guarantee (unless specified).

Copies of our credentials and certifications are available at leeandplumpton.co.uk



Quality Management System BS EN ISO 9001



Environmental Management System BS EN ISO 14001



Occupational Health And Safety Management System OHSAS 45001 (OH&S)



Commercial Interiors U.K. (CIUK)



Established 1987

Commercial Furniture Advisory Service (CFAS)



Members Of Furniture Industry Research Association (FIRA)



RESPONSIBLE MANUFACTURING

As a major manufacturer, we recognise our responsibility to consider all areas of our business in terms of environmental impact. From management, administration and product design through to facilities management and logistics together with manufacturing processes and procedures, we strive to introduce positive changes to protect the planet.

Our efforts embrace the full spectrum of business activities including reductions in carbon emissions through to waste prevention, recycling initiatives, transportation, investment in solar power and procurement practices. Sustainability and circularity principles are embedded within our product design and development processes. We are committed to minimising our carbon impact and working towards a greener future.

Environmental Management

We measure and assess our efforts through our integrated Environmental Management System. Registered to ISO 14001: 2015, our system incorporates clear objectives which are monitored and measured through a documented programme with regular reviews for continuous improvement.



Chain of Custody

Our Chain of Custody certification (COC) with the Forest Stewardship Council® (FSC®) represents the unbroken path that certificated products take, from the sustainably managed forests of origin, to the consumer.



The mark of responsible forestry

Sustainability

Created in 2006, the Furniture Industry Sustainability Programme (FISP) has become established as the furniture industry forum on all environmental and sustainability issues. These considerations relate to all aspects of the industry's business, from purchasing and procurement through to end of product life, including social, ethical and employment concerns as well as waste, energy and emissions.

We have achieved full membership of FISP and this enables us to focus on reducing our social and environmental impact. We have been proud members of the Furniture Industry Sustainability Programme (FISP) since 2007. Membership is subject to regular independent re-audits to monitor our continuing commitment.



Energy Management

Our energy management strategy includes a number of practices to minimise usage throughout all areas of the business. In addition, in the last year our solar panels have generated over 160,000 Kwh of electricity. Nearly half of the output is returned to the National Grid – sufficient to power 26 three/quarter bedroom homes for a year.



LEE & PLUMPTON

Bunns Bank | Attleborough Norfolk | NR17 1QD
T: 01953 453830 | E: sales@leeandplumpton.co.uk

leeandplumpton.co.uk



@LEEANDPLUMPTON

October 2022_v1.1

E&OE October 2022

Images featured within this brochure are for illustrative purposes and appearances may vary from those shown. Due to our ongoing initiatives, Lee & Plumpton Ltd. reserve the right to change, modify or delete products at any time without notification.

