



LEE & PLUMPTON

Inspiration At Work

ACCESSORIES





QS: Quick Ship | **GROUP A:** Subject to a longer lead time.

● Available
○ Not Available

FEATURES & DETAILS

- Monitor weight range 3 – 9kg.
- Horizontal reach: 581mm; Vertical adjustment: 341mm.
- Patented Flo Spring technology gives fingertip adjustability.
- Screen can be easily rotated from portrait to landscape (& vice versa).
- Ideal for touch screen technology.
- Integrated cable management.



FLO SINGLE



Description	Code	QS	Grp A
Flo Dynamic Arm with Top Mount Desk Clamp	ACFDADC	○	●

Simply add the colour suffix to your code when ordering:
B Black **S** Silver **W** White.

FLO DUAL (INDIVIDUAL CLAMPS)



Description	Code	QS	Grp A
Flo Dynamic Arm (x2) with Top Mount Desk Clamp (x2) (12-25mm)	ACFDADC2	○	●

Simply add the colour suffix to your code when ordering:
B Black **S** Silver **W** White.

FLO DUAL (DUAL CLAMP)



Description	Code	QS	Grp A
Flo Dynamic Arm (x2) with Dual Top Mount Desk Clamp (12-25mm)	ACFDADDC2	○	●

Simply add the colour suffix to your code when ordering:
B Black **S** Silver **W** White.



NILTO

QS: Quick Ship | **GROUP A:** Subject to a longer lead time.

● Available
○ Not Available

FEATURES & DETAILS

- Accommodates devices from 0kg - 9kg.
- Horizontal reach: 674mm; Vertical adjustment: 346mm.
- Maximum height: 508mm.
- Smooth articulation & responsive movements allows fingertip control of the screen.
- Screen can be easily rotated from portrait to landscape (& vice versa).
- Ideal for touch screen technology.
- Integrated cable management.



OLLIN SINGLE



Description	Code	QS	Grp A
Ollin Dynamic Arm with Top Mount Desk Clamp (12-25mm)	ACODADC	○	●

Simply add the colour suffix to your code when ordering:
B Black **S** Silver **W** White

OLLIN DUAL



Description	Code	QS	Grp A
Ollin Dynamic Arm with Dual Mount Bar (black only) (2 x 4kg no greater than 27" each) With Top Mount Desk Clamp (12-25mm)	ACODADMDC	○	●

Simply add the colour suffix to your code when ordering:
B Black **S** Silver **W** White



QS: Quick Ship | **GROUP A:** Subject to a longer lead time.

- Available
- Not Available

MONITOR ARMS

5 Year Guarantee on all monitor arms.

POLE MOUNTED, SINGLE



Description	Colour	Code	QS	Grp A
Pole mounted monitor arm for single screen, with quick release height adjustment and detachable VESA plate.	Black, Silver & White	ACMONARMSPM	○	●

Simply add the colour suffix to your code when ordering: **B** Black, **S** Silver, **W** White.

POLE MOUNTED, TWIN



Description	Colour	Code	QS	Grp A
Pole mounted monitor arm for twin screen, with quick release height adjustment and detachable VESA plate.	Black, Silver & White	ACMONARMTPM	○	●

Simply add the colour suffix to your code when ordering: **B** Black, **S** Silver, **W** White.

SCREEN MOUNTED, SINGLE



Description	Colour	Code	QS	Grp A
Desk screen mounting pole mounted monitor arm for single screen, with quick release height adjustment and detachable VESA plate.	Black, Silver & White	ACMONARMSCPM	○	●

Simply add the colour suffix to your code when ordering: **B** Black, **S** Silver, **W** White.

LAPTOP HOLDER



Description	Colour	Code	QS	Grp A
Universal laptop holder for fixing to standard 75 / 100mm VESA fittings.	Silver & White	ACLAPHOLD	○	●

Simply add the colour suffix to your code when ordering: **S** Silver, **W** White.



QS: Quick Ship | GROUP A: Subject to a longer lead time.

● Available
○ Not Available



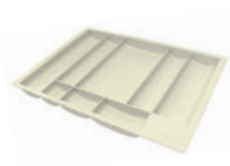
PEDESTAL ACCESSORIES

ADJUSTABLE PEN TRAY



Description	Range	Colour	Code	QS	Grp A
Single	All wooden Pedestals	Black	ATPTRAYS	●	●

PEN TRAYS, LIGHT GREY



Description	Range	Code	QS	Grp A
Single	AuraBench, Atmosphere & DominoBeam	SAPTRAY1LG	○	●
Pack of 5	AuraBench, Atmosphere & DominoBeam	SAPTRAY5SY	●	●

BOW HANDLES



Description	Range	Colour	Code	QS	Grp A
Pack of 10	All	Silver	ACBOWS	●	●

MOSAIC HANDLES



Description	Range	Colour	Code	QS	Grp A
Pack of 10	All	Silver	ACMOAICS	●	●

MATRIX HANDLES



Description	Range	Colour	Code	QS	Grp A
Pack of 10	All	Silver	ACMATRIXS	●	●

OVAL HANDLES



Description	Range	Colour	Code	QS	Grp A
Pack of 10	All	Silver	ACOVALS	●	●

BAR HANDLES



Description	Range	Colour	Code	QS	Grp A
Pack of 10	All	Silver	ACBARS	●	●

QS: Quick Ship | **GROUP A:** Subject to a longer lead time.

● Available
○ Not Available



CABLE MANAGEMENT

VERTICAL CABLE SPINE (DESKS)



Description	Colour	Code	QS	Grp A
35 x 65 x 800mm (easily manually shortened) with two cable compartments. 3 mounting options - cable tray, wire basket, or desktop.	Black, Silver & White	ACCVSPINE	○	●

Simply add the colour suffix to your code when ordering: **B** Black **S** Silver **W** White.

VERTICAL CABLE SPINE (SIT/STAND DESK)



Description	Colour	Code	QS	Grp A
35 x 65 x 1280mm (easily manually shortened) with two cable compartments. 3 mounting options - cable tray, wire basket, or desktop.	Black, Silver & White	ACCVSSSPINE	○	●

Simply add the colour suffix to your code when ordering: **B** Black **S** Silver **W** White.

SLINKY CABLE MANAGER



Description	Colour	Code	QS	Grp A
Slinky Cable Manager	Black, Silver & White	ACCMSLINKY	○	●

Simply add the colour suffix to your code when ordering: **B** Black **S** Silver **W** White.

CABLE TRUNKING



Description	Colour	Code	QS	Grp A
Plastic cable trunking to neatly conceal wires. 2 x 2.5 metre lengths included. Self adhesive to secure to surfaces.	Anthracite	ACCTRUNK	●	●

WIRE MESH CABLE TRAYS



Description	Colour	Code	QS	Grp A
Suitable for 1000mm desk	Chrome	ACMESH10	●	●
Suitable for 1200mm desk	Chrome	ACMESH12	●	●
Suitable for 1400mm desk	Chrome	ACMESH14	●	●
Suitable for 1600mm desk	Chrome	ACMESH16	●	●
Suitable for 1800mm desk	Chrome	ACMESH18	●	●

5 Year Guarantee on wire mesh cable trays.



CPU HOLDER 01



Description	Colour	Code	QS	Grp A
C3 large CPU holder for fixing to desk top, adjustable in W 80 – 220mm, H 300 – 530mm. 5 Year Guarantee.	Black, Silver & White	ACCPUHOLDL	○	●

Simply add the colour suffix to your code when ordering: **B** Black **S** Silver **W** White.

CPU HOLDER 02



Description	Colour	Code	QS	Grp A
C6 universal adjustable belt CPU holder for fixing under the desk top. 5 Year Guarantee.	Black	ACCPUHOLDUNI	○	●

MICRO CPU HOLDER



Description	Colour	Code	QS	Grp A
Ideal for mini CPUs. Can be fitted to pole or arm, allows easy access to ports. Can also be fixed to any part of the desk. Fully adjustable for different CPU sizes. 5 Year Guarantee.	Black, Silver & White	ACCPUHOLDM	○	●

Simply add the colour suffix to your code when ordering: **B** Black **S** Silver **W** White.

CPU UNIT



Description	Colour	Code	QS	Grp A
L342 x D600 x H665mm.	Beech	ACCPUNIT	●	●

CPU TROLLEY



Description	Colour	Code	QS	Grp A
L555 x D204 x H80mm.	Beech	ACCPUTROL	●	●

QS: Quick Ship | **GROUP A:** Subject to a longer lead time.

- Available
- Not Available

POWER MODULES

Integrated power modules are available in a variety of configurations providing you with power, data and media connections.

FLIP TOP POWER MODULES

The Flip top in desk power module has a flip up cover which is designed to be flat when not in use, perfect for boardroom tables. The sloping edge design ensures cables run flat and smoothly on exit. Available in grey, white or black with silver lids.

FLIP TOP POWER MODULES 01



Description	Colour	Code	QS	Grp A
2 UK sockets & RJ45 sockets with switch. <ul style="list-style-type: none">• 2 x UK Sockets• 2 x RJ45 sockets• Mains lead 2m• 2 x 2m RJ45 Cat6 data lead	Black Grey White	ACPMRJ45	○	●

FLIP TOP POWER MODULES 02



Description	Colour	Code	QS	Grp A
2 UK Sockets with switch and USB socket <ul style="list-style-type: none">• 2 x UK Sockets• 1 x USB A+C Smart Connector• Mains lead 2m	Black Grey White	ACPMSCUK	○	●



QS: Quick Ship | **GROUP A:** Subject to a longer lead time.

● Available
○ Not Available

CHROMA - ON DESK POWER MODULE



Description	Colour	Code	QS	Grp A
2 x UK, 1 x SC white/black inclusive of a 2 metre main cable. 1 x Neon Switch, 2 x UK power sockets, individually fused 3.15Amp. Comes with fixing bracket.	White Black	ACCHODPMWH ACCHODPMBK	○	●

AIRCHARGE UNITS



Description	Colour	Code	QS	Grp A
Aircharge	Aluminium/Black	ACSCABK	○	●
Aircharge	Aluminium/White	ACSCAWH	○	●
Aircharge	Nylon/Black	ACSCNBK	○	●
Aircharge	Nylon/White	ACSCNWH	○	●

- Wireless charging for smartphones and tablets.
- Fixing via 80mm cable port / aperture.
- Power plug included.

PORT HOLES



Easy to retrofit, incorporates an under desk, hand tightened barrel nut to fix unit in place. All power and data cables exit from the base of the unit.

Description	Colour	Code	QS	Grp A
Port Hole 1 x Power socket and 1m mains cable • Power socket 3.15A individually fused with 1m mains cable to 3 pin connector	Black Grey White	ACPORTSOCKBK ACPORTSOCKGY ACPORTSOCKWH	○	●
Port Hole with USB Socket 1 x Power socket, 1 x USB socket, 1m mains cable, 2m USB lead • Power socket 3.15A individually fused with 1m mains cable to 3 pin connector and 2m USB lead.	Black Grey White	ACPORTUSBBK ACPORTUSBGY ACPORTUSBWH	○	●
Power Hole with RJ45 Cat6 Socket 1 x Power socket, 1 x RJ45 Cat6 socket, 1m mains cable, 3m data lead • Power socket 3.15A individually fused with 1m mains cable to 3 pin connector with 3m data lead.	Black, Grey White	ACPORTRJ45BK ACPORTRJ45GY ACPORTRJ45WH	○	●

Port holes fit desks fitted with round cable ports. Port holes feature individual fuse and are independently certified to BS 5733.

GANG SOCKET



Description	Colour	Code	QS	Grp A
2 Socket with switches	Black	ACSOCKET2	●	●
3 Sockets, no switches	Black	ACSOCKET3	●	●
4 Sockets, no switches	Black	ACSOCKET4	●	●

MAINS CABLE



Description	Colour	Code	QS	Grp A
3 Metre length	Black	ACMAINCAB3	●	●
5 Metre length	Black	ACMAINCAB5	●	●
7 Metre length	Black	ACMAINCAB7	●	●

QS: Quick Ship | **GROUP A:** Subject to a longer lead time.

● Available
○ Not Available

CHAIR MATS

Chair mats protect carpets and hard floors from damage caused by chairs and other furnishings.

POLYCARBONATE CHAIR MATS



- Incredibly tough polycarbonate formulation with attractive textured top surface.
- Rigid material provides an ergonomic easy glide surface for chair users to reduce back and leg strain.
- Gripper or smooth back for use on both carpets and hard floors.
- PVC, Cadmium, Tin & Lead free.
- Contains up to 50% recycled content and is 100% recyclable.
- 3 year guarantee.

Surface	W x H (cm)	Colour	Code	QS	Grp A
Gripper Backed For Carpets	120 x 90	Clear	ACPC1290C	○	●
Gripper Backed For Carpets	150 x 120	Clear	ACPC1520C	○	●
Smooth Backed For Hard Floors	120 x 90	Clear	ACPC1290H	○	●
Smooth Backed For Hard Floors	150 x 120	Clear	ACPC1520H	○	●

PVC CHAIR MATS



- Durable construction with attractive textured top surface.
- Gripper or smooth back for use on both carpets and hard floors. Mats are 100 % free of harmful DIDP Phthalate content for improved air quality over conventional PVC products.
- Cadmium, Tin & Lead free.
- Contains up to 25% recycled content.
- 2 year guarantee.

Surface	W x H (cm)	Colour	Code	QS	Grp A
Gripper Backed For Carpets	120 x 90	Clear	ACPV1290C	○	●
Gripper Backed For Carpets	150 x 120	Clear	ACPV1520C	○	●
Smooth Backed For Hard Floors	120 x 90	Clear	ACPV1290H	○	●
Smooth Backed For Hard Floors	150 x 120	Clear	ACPV1520H	○	●

QS: Quick Ship | **GROUP A:** Subject to a longer lead time.

● Available
○ Not Available

ANTI-FATIGUE SYSTEM MATS

- Contains anti-microbial ingredients to protect from microbial deterioration and is effective for the life of the product.
- Anti-slip base with 'easy-slide' for repositioning.
- Environmentally friendly.
- Non-toxic and phthalate free.
- 10 year Guarantee.

Designed to encourage regular foot movement and changes in standing position, to stimulate blood flow and increase metabolism.



AFS MATS 2000



W x D (cm)	Colour	Code	QS	Grp A
50 x 80 cm	Midnight Black	ACAF20	○	●
<ul style="list-style-type: none"> • High gauge 18mm polyurethane construction. • Deep cushioned mat. • Features an ergonomically designed print that encourages regular movement. • Anti-microbial and anti-slip base. 				

AFS MATS 3000



W x D (cm)	Colour	Code	QS	Grp A
50 x 100 cm	Midnight Black	ACAF30	○	●
<ul style="list-style-type: none"> • Premium gauge extra depth 20mm polyurethane construction designed not to lose body support over time. • Extended width for larger areas. • Polyester cover for added comfort, ideal for users who like to work without footwear. • Contoured, curl-proof edging ensures stability. • Anti-microbial and anti-slip base. 				

AFS MATS 3000x



W x D (cm)	Colour	Code	QS	Grp A
50 x 100 cm	Midnight Black	ACAF3X	○	●
<ul style="list-style-type: none"> • Premium gauge extra depth 20mm polyurethane construction designed not to lose body support over time. • Polyester cover for added comfort, ideal for users who like to work without footwear. • Debossed surface provides foot massage and encourages movement. • Contoured, curl-proof edging ensures stability. • Extended width for larger areas, plus built in hang tag. • Anti-microbial and anti-slip base. 				

AFS MATS 5000



W x D (cm)	Colour	Code	QS	Grp A
66 x 90 cm	Midnight Black	ACAF50	○	●
<ul style="list-style-type: none"> • Premium gauge extra depth polyurethane construction designed not to lose body support over time. • Contoured profile between 20mm and 50mm. • Raised trigger massager pods to encourage movement and massage the soles of feet (if working without shoes). • Ergo-bar and raised surround allows stretching of feet and ankles. This feature can also be used to easily reposition the mat. • Anti-microbial and anti-slip base. 				



BESPOKE DESIGN SERVICE



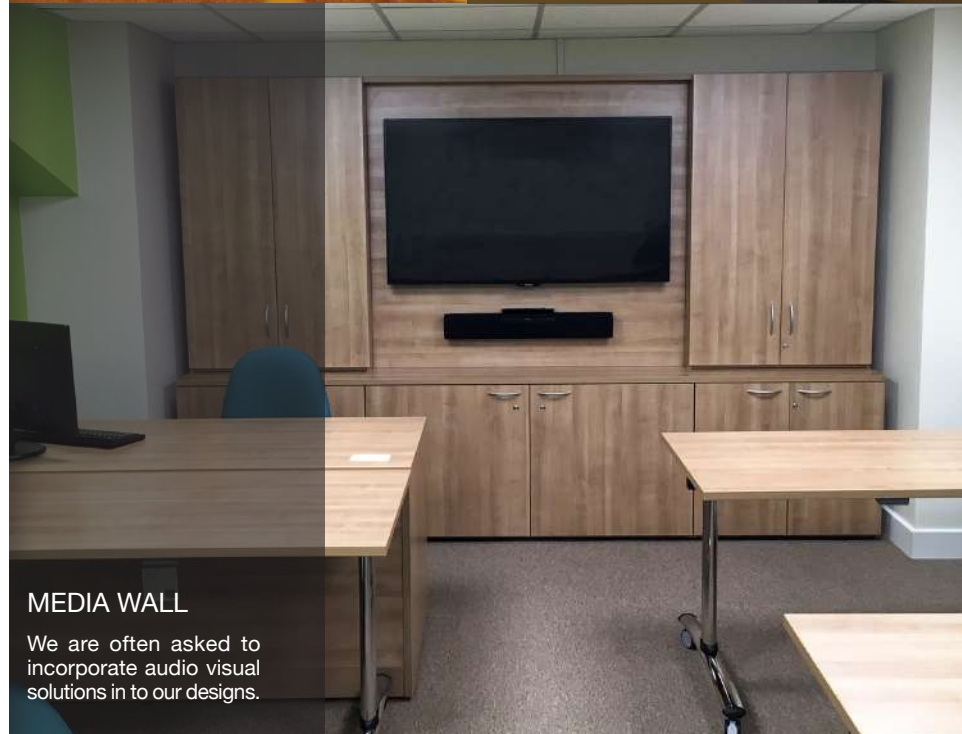
STUDENT BED

Custom designed student bed with under bed storage.

MADE TO MEASURE

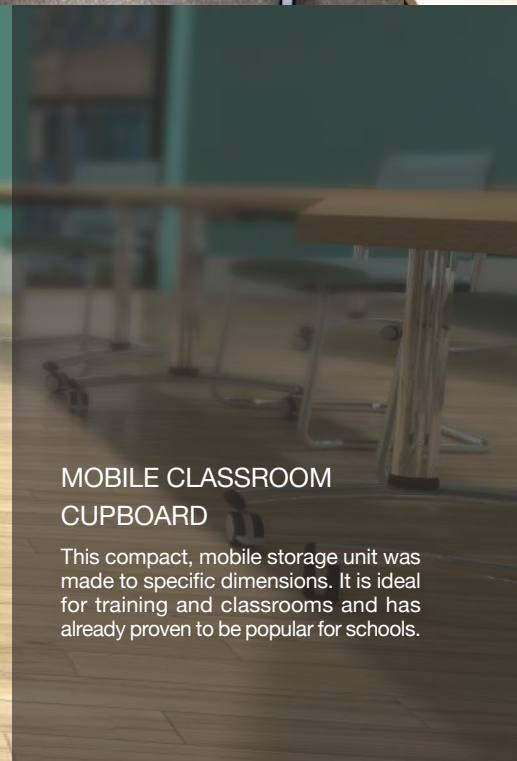
Our specialist bespoke design team is available to develop customised solutions to match client's precise requirements.

With its own production unit and dedicated team, our Bespoke department can design and manufacture products from original 'sketches' or develop existing range items to match particular specifications.



MEDIA WALL

We are often asked to incorporate audio visual solutions in to our designs.



MOBILE CLASSROOM CUPBOARD

This compact, mobile storage unit was made to specific dimensions. It is ideal for training and classrooms and has already proven to be popular for schools.

A COMMITMENT TO SERVICE

Dedicated Customer Service

The values of Integrity, Commitment, Development, Accountability and Teamwork underpin the culture and aspirations of the Company. We strive to design and develop an extensive portfolio of quality products which combine aesthetics and practicality to offer Best Value solutions. The ongoing monitoring of every aspect of the business ensures we are able to implement continuous improvements to maintain our determined commitment to customer service.



Inhouse Delivery Fleet

We operate and manage our own delivery fleet and are targeted for accurate, on time order fulfillment. Rapid turnaround is guaranteed by our weekly scheduled deliveries and, on many items, we also offer a 'Quick Ship' service. Standard deliveries are free of charge with next day delivery on stocked items or customer collection (with 24 hours' notice) also available.

- Quick Ship: Products delivered within 5 working days from your order deadline date.
- Group A: Products subject to a longer lead time (typically 3 weeks).



Extensive Stock Holding

Our 200,000 square feet manufacturing base includes an extensive warehousing facility. We hold stock of an estimated 50,000 items including raw materials and finished goods.

This substantial financial investment provides a further demonstration of our determined commitment to the highest levels of customer service.

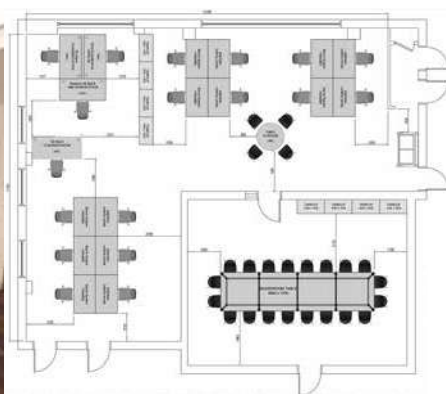


INHOUSE EXPERTISE

Bespoke Design

Unlike many manufacturers, we are able to develop customised solutions to match each client's precise requirements. With its own production unit and dedicated team, our Bespoke department can design and manufacture products from original 'sketches' or develop existing range items to customised specifications.

Your dedicated account manager, together with a member of the Bespoke team, will work with you to develop a solution to match your requirement and budget.



Planning & Design

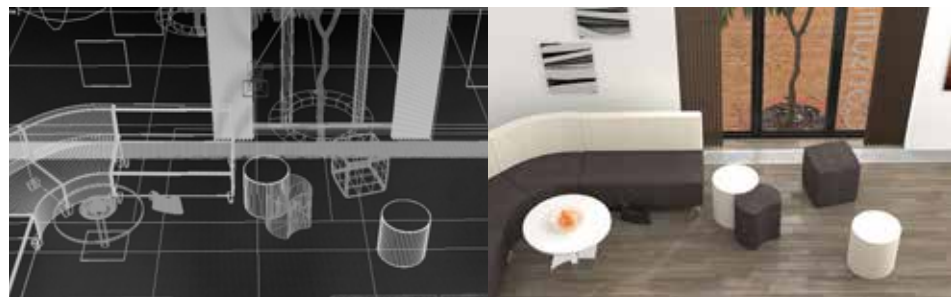
Our highly experienced designers are available to offer expert space planning and design services. Working from simple sketches or architect plans, we can recommend product choice, configurations and finishes to match desired outcomes and available budget.

We are able to advise regarding effective space utilisation and also work collaboratively to consider lighting, team requirements, storage as well as existing building services and future reconfigurations of any environments.

CGI Expertise

We have an extensive library of product images together with a portfolio of 3D CAD files. Customers can download files from our web site or upon request.

The wide choice of CGI, photo-realistic room scenes can help visualise proposed interiors, colours, and designs.



Sales & Customer Support

We know relationships are important. Our nationwide sales team offers 'face to face' meetings to provide expert support, advice and guidance as well as facilitating access to our extensive inhouse services including customised marketing materials, product samples and collaborative events.

Each and every order is carefully monitored and tracked by our customer services team. Fully trained advisors provide a dedicated point of contact to manage queries and requests as well as full after-sales support.

A COMMITMENT TO QUALITY

Continuous investment in facilities and training, coupled with a dedicated workforce and strong supplier relationships, ensures the quality, consistency and reliability our customers expect. The management and measurement of our internal processes and procedures drives our quest for development and improvement and, therefore, ongoing customer satisfaction.

We have an established reputation for the supply of robust, quality products. We design and manufacture to comply with relevant British and international standards – covering dimensions; ergonomics; strength & stability; moving parts; fire regulations; and electrical systems. The inherent strength and durability means that our products will withstand the rigours of daily ‘wear and tear’ thus extending the lifecycle. Our furniture includes a 7-year guarantee (unless specified).

Copies of our credentials and certifications are available at leeandplumpton.co.uk



Quality Management
System BS EN ISO
9001



Environmental Management
System BS EN ISO 14001



Occupational Health And
Safety Management System
OHSAS 45001 (OH&S)



Commercial Interiors
U.K.
(CIUK)



Established 1987

Commercial Furniture
Advisory Service (CFAS)



Members Of Furniture
Industry Research
Association (FIRA)



RESPONSIBLE MANUFACTURING

As a major manufacturer, we recognise our responsibility to consider all areas of our business in terms of environmental impact. From management, administration and product design through to facilities management and logistics together with manufacturing processes and procedures, we strive to introduce positive changes to protect the planet.

Our efforts embrace the full spectrum of business activities including reductions in carbon emissions through to waste prevention, recycling initiatives, transportation, investment in solar power and procurement practices. Sustainability and circularity principles are embedded within our product design and development processes. We are committed to minimising our carbon impact and working towards a greener future.

Environmental Management

We measure and assess our efforts through our integrated Environmental Management System. Registered to ISO 14001: 2015, our system incorporates clear objectives which are monitored and measured through a documented programme with regular reviews for continuous improvement.



Chain of Custody

Our Chain of Custody certification (COC) with the Forest Stewardship Council® (FSC®) represents the unbroken path that certificated products take, from the sustainably managed forests of origin, to the consumer.



Sustainability

Created in 2006, the Furniture Industry Sustainability Programme (FISP) has become established as the furniture industry forum on all environmental and sustainability issues. These considerations relate to all aspects of the industry's business, from purchasing and procurement through to end of product life, including social, ethical and employment concerns as well as waste, energy and emissions.

We have achieved full membership of FISP and this enables us to focus on reducing our social and environmental impact. We have been proud members of the Furniture Industry Sustainability Programme (FISP) since 2007. Membership is subject to regular independent re-audits to monitor our continuing commitment.



Energy Management

Our energy management strategy includes a number of practices to minimise usage throughout all areas of the business. In addition, in the last year our solar panels have generated over 160,000 Kwh of electricity. Nearly half of the output is returned to the National Grid – sufficient to power 26 three/four bedroom homes for a year.



LEE & PLUMPTON

Bunns Bank | Attleborough Norfolk | NR17 1QD
T: 01953 453830 | E: sales@leeandplumpton.co.uk

leeandplumpton.co.uk



@LEEANDPLUMPTON

October 2022_v1.1

E&OE October 2022

Images featured within this brochure are for illustrative purposes and appearances may vary from those shown. Due to our ongoing initiatives, Lee & Plumptre Ltd. reserve the right to change, modify or delete products at any time without notification.

