



LEE & PLUMPTON

*Inspiration At Work*

# ENVIRONMENTAL COMMITMENT 2021





# RESPONSIBLE MANUFACTURING

As a major manufacturer, we recognise our responsibility to consider all areas of our business in terms of environmental impact. From management, administration and product design through to facilities management and logistics together with manufacturing processes and procedures, we strive to introduce positive changes to protect the planet.

Our efforts embrace the full spectrum of business activities including reductions in carbon emissions through to waste prevention, recycling initiatives, transportation, investment in solar power and procurement practices. Sustainability and circularity principles are embedded within our product design and development methods. We are committed to minimising our carbon impact and working towards a greener future.

## Environmental Management

We measure and assess our efforts through our integrated Environmental Management System. Registered to ISO 14001: 2015, our system incorporates clear objectives which are monitored and measured through a documented programme with regular reviews for continuous improvement.

Our energy management strategy includes a number of practices to minimise usage throughout all areas of the business. Our solar panels have, in the last year, generated over 160,000 Kwh of electricity. Nearly half of the output is returned to the National Grid – sufficient to power 26 three/four bedroom homes for a year.





As a conscientious and socially responsible manufacturer, we're extremely proud to say that we send zero waste to landfill



Our production processes maximise material usage to minimise waste



Materials are selected to ensure any waste has maximum recycling potential. Any waste is collected for reuse or recycling



In the last year, we recycled 194 tonnes of sawdust – the equivalent weight of 32 African elephants



We also recycled 8 tonnes of cardboard – that's the equivalent weight of over 6 adult rhinos



Waste is sent to a state-of-the-art facility capable of generating renewable energy



Mechanical sorting techniques combined with manual quality checks enable over 95% of material to be reprocessed into new products

As part of our ISO EN BS 14001 certificated environmental management system we continually strive to minimise waste



# PRODUCT DESIGN & MANUFACTURING

We have an established reputation for the supply of robust, quality products. We design and manufacture to comply with relevant British and international standards – covering dimensions; ergonomics; strength & stability; moving parts; fire regulations; and electrical systems.

The inherent strength and durability means that our products will withstand the rigours of daily 'wear and tear' thus extending the lifecycle.

Our product design principles are based upon modularity. This approach not only makes good economic sense ensuring we offer 'best value' to our customers but also minimises waste.

The inhouse design team works closely with manufacturing and procurement colleagues to ensure that policies and standards are adhered to and cascaded through our supply chain. Working collaboratively, we identify solutions to reduce waste, embrace sustainability and maximise longevity of finished products and components.



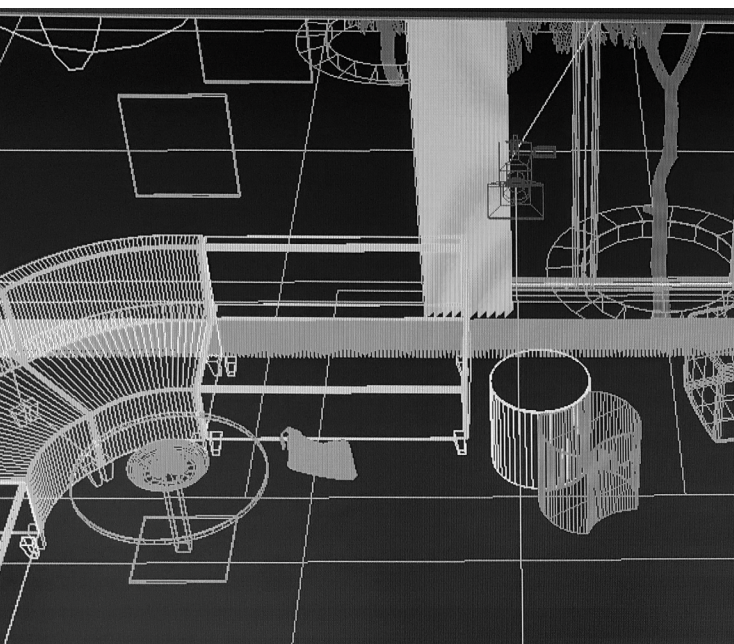
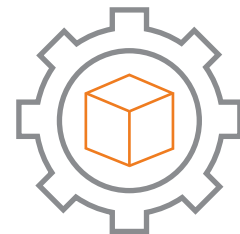
The mark of  
responsible forestry

## Chain of Custody

Our Chain of Custody certification (COC) with the Forest Stewardship Council® (FSC®) represents the unbroken path that certificated products take, from the sustainably managed forests of origin, to the consumer.

## Lifecycle Management

Our inhouse design and manufacturing teams maintain a database of product drawings, materials and components. This approach enables us to supply replacement parts should products be damaged thus further extending useful life.



# STANDARDS & CERTIFICATIONS



Quality Management  
System BS EN ISO  
9001



Environmental Management  
System BS EN ISO 14001



Occupational Health And  
Safety Management System  
OHSAS 45001 (OH&S)



British Contract  
Furnishing Association  
(BCFA)



Commercial Furniture  
Advisory Service  
(CFAS)



Members Of Furniture  
Industry Research  
Association (FIRA)





LEE & PLUMPTON

Bunns Bank | Attleborough Norfolk | NR17 1QD

T: 01953 453830 | E: sales@leeandplumpton.co.uk

[leeandplumpton.co.uk](http://leeandplumpton.co.uk)



@LEEANDPLUMPTON

May 2021\_v1

E&OE May 2021

Images featured within this brochure are for illustrative purposes and appearances may vary from those shown. Due to our ongoing initiatives, Lee & Plumptre Ltd. reserve the right to change, modify or delete products at any time without notification.

